



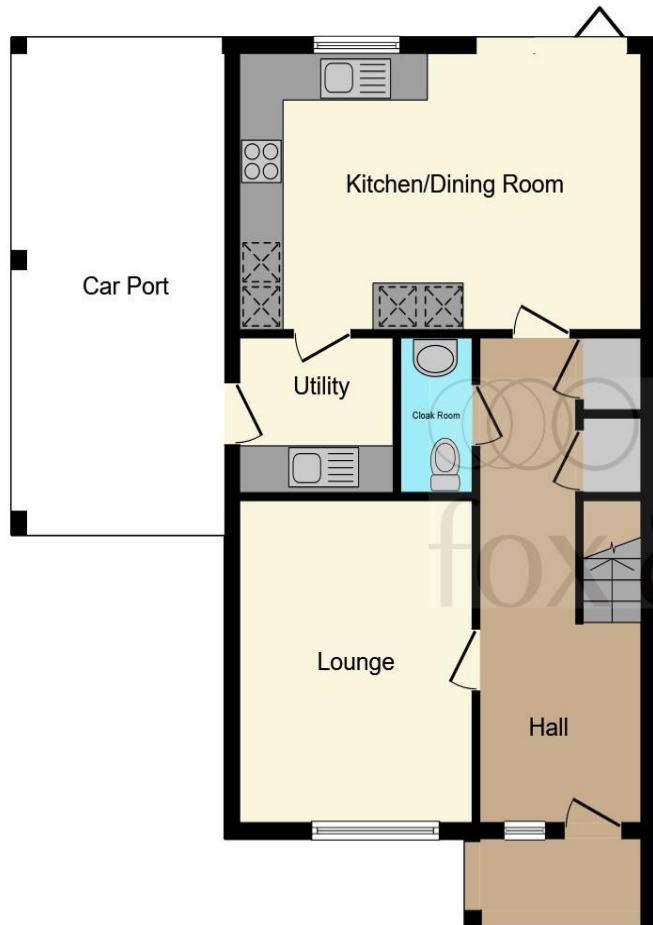
Spring Bank,Lunces Hill Haywards Heath RH16 4LF

welcome to

Spring Bank, Lunces Hill Haywards Heath

READY TO MOVE INTO!! Carefully crafted 3 bedroom home that features a high spec kitchen complete with a connecting utility area, an upstairs dedicated study, a master bedroom boasting double fitted shaker style wardrobes, as well as bedroom 2 and 3 also including fitted shaker style wardrobes.





Ground Floor



First Floor

Dining / Kitchen

17' 10" x 11' 8" (5.44m x 3.56m)

Utility

7' x 6' 6" (2.13m x 1.98m)

Cloaks

Lounge

13' 7" x 10' 6" (4.14m x 3.20m)

Bedroom 1

11' 9" x 9' 4" (3.58m x 2.84m)

En Suite

Bedroom 2

12' 1" x 10' 6" (3.68m x 3.20m)

En Suite

Bedroom 3

10' 10" x 8' 6" (3.30m x 2.59m)

Study

11' 2" x 6' 8" (3.40m x 2.03m)

Bathroom

Total floor area 128.9 m² (1,387 sq.ft.) approx

This floor plan is for illustrative purposes only. It is not drawn to scale. Any measurements, floor areas (including any total floor area), openings and orientation are approximate. No details are guaranteed, they cannot be relied upon for any purpose and they do not form part of any agreement. No liability is taken for any error, omission or misstatement. A party must rely upon its own inspection(s). Powered by www.focalagent.com

welcome to

Spring Bank, Lunces Hill Haywards Heath

- ****SHOW HOME - INCLUDING FURNITURE PACK***
- ***10K STAMP DUTY CONTRIBUTION IF YOU RESERVE IN APRIL!!- subject to T&Cs***
- ENERGY EFFICIENT AIR SOURCE HEAT PUMP PROVIDING UNDERFLOOR HEATING ON THE GROUND FLOOR
- MASTER BEDROOM AND BEDROOM TWO BOTH WITH EN SUITE
- PREMIUM SANITARYWARE, PRESSURISED SHOWER, DEMISTER MIRRORS, HEATED TOWEL RAIL AND CHROME FITTINGS IN BATHROOM AND EN SUITES

Tenure: Freehold EPC Rating: Exempt



Please note the marker reflects the postcode not the actual property

view this property online fox-and-sons.co.uk/Property/HHT109694



Property Ref:
HHT109694 - 0009

1. MONEY LAUNDERING REGULATIONS Intending purchasers will be asked to produce identification documentation at a later stage and we would ask for your co-operation in order that there is no delay in agreeing the sale. 2. These particulars do not constitute part or all of an offer or contract. 3. The measurements indicated are supplied for guidance only and as such must be considered incorrect. Potential buyers are advised to recheck measurements before committing to any expense. 4. We have not tested any apparatus, equipment, fixtures or services and it is in the buyers interest to check the working condition of any appliances. 5. Where an EPC, or a Home Report (Scotland only) is held for this property, it is available for inspection at the branch by appointment. If you require a printed version of a Home Report, you will need to pay a reasonable production charge reflecting printing and other costs. 6. We are not able to offer an opinion either written or verbal on the content of these reports and this must be obtained from your legal representative. 7. Whilst we take care in preparing these reports, a buyer should ensure that his/her legal representative confirms as soon as possible all matters relating to title including the extent and boundaries of the property and other important matters before exchange of contracts.

Fox & Sons is a trading name of Sequence (UK) Limited which is registered in England and Wales under company number 4268443, Registered Office is Cumbria House, 16-20 Hockliffe Street, Leighton Buzzard, Bedfordshire, LU7 1GN. VAT Registration Number is 500 2481 05.


fox & sons



01444 450105



HaywardsHeath@fox-and-sons.co.uk



115 South Road, HAYWARDS HEATH, West
Sussex, RH16 4LR



fox-and-sons.co.uk