



Vale Road, Haywards Heath, RH16 4JS

welcome to

Vale Road, Haywards Heath

Fox and Sons presents this two double bedroom home which sits within walking distance to the town. There is a bright living room, a modern kitchen, two double bedrooms, driveway and a front and rear garden.



Fox and Sons proudly presents this bright and spacious two double bedroom house to the market.

There are two bright and modern reception rooms, kitchen, two double bedrooms and a modern bathroom on the ground floor.

The location is hugely convenient being very close to the town centre.

This house offers a front and rear garden with driveway.

Viewings are highly recommended.

Lounge

15' 3" at max x 12' 11" at max (4.65m at max x 3.94m at max)

Dining Room

10' at max x 8' 9" at max (3.05m at max x 2.67m at max)

Kitchen

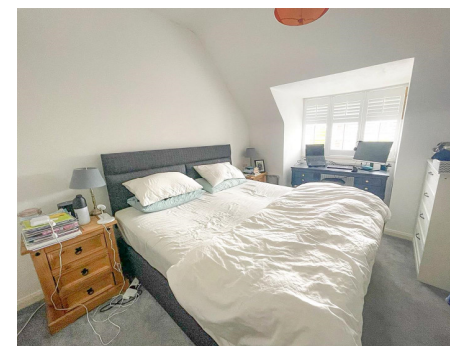
11' 10" at max x 9' 10" at max (3.61m at max x 3.00m at max)

Bedroom 1

13' 10" at max x 10' at max (4.22m at max x 3.05m at max)

Bedroom 2

13' 10" at max x 9' 5" at max (4.22m at max x 2.87m at max)



view this property online fox-and-sons.co.uk/Property/HHT109215

