



Leicester Avenue, Gaywood, KING'S LYNN, PE30 4PJ

welcome to

Leicester Avenue, Gaywood, KING'S LYNN

William H Brown are delighted to offer to market this three bedroom, mid terrace home, located in a popular location close to local amenities. Viewing recommended!



Entrance Hall

Lounge

13' 1" x 12' 2" max (3.99m x 3.71m max)

Double glazed window to the front. In-built storage cupboard and shelving. Radiator.

Kitchen/ Diner

19' 10" max x 11' 10" max (6.05m max x 3.61m max)

Fitted with wall and base units with worktops over. Stainless steel sink with mixer tap and drainer. In-built oven and grill. Gas ring hob with extractor fan above. Space for free standing fridge freezer. Space and plumbing for washing machine. Part tiled walls. Two radiators. Double glazed window to the rear.

First Floor Landing

Double glazed window. Radiator.

Bedroom One

12' 8" max x 10' max (3.86m max x 3.05m max)

Double glazed window to the front. In-built wardrobe. Radiator.

Bedroom Two

12' 8" max x 9' 5" max (3.86m max x 2.87m max)

Double glazed window to the rear. In-built wardrobe space. Radiator.

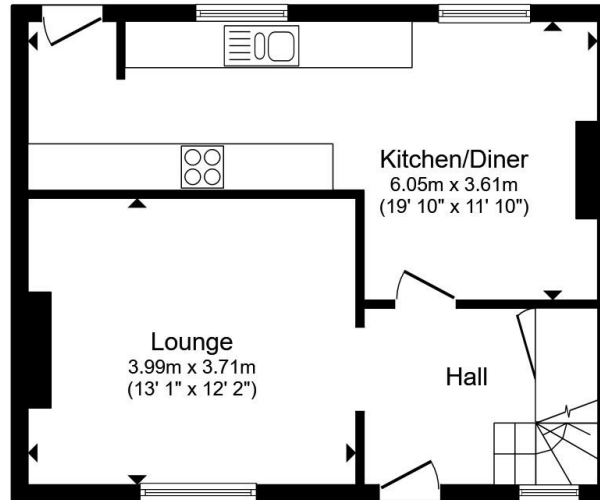
Bedroom Three

11' 10" max x 7' 5" max (3.61m max x 2.26m max)

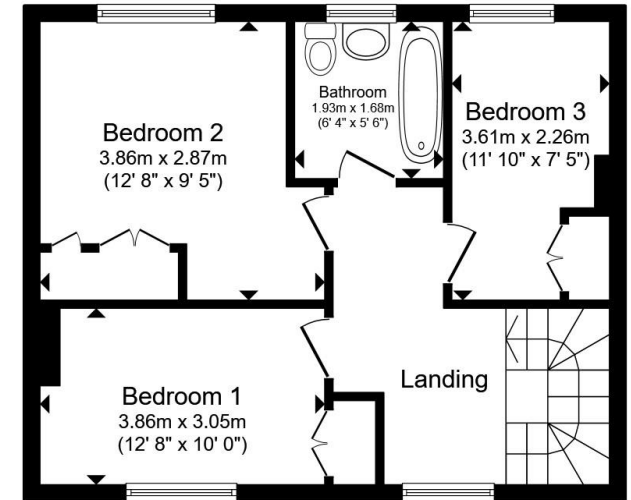
Double glazed window to the rear. Radiator

Outside

Enclosed Rear Garden with a Patio Area and Remainder Laid to Lawn



Ground Floor



First Floor

Total floor area 88.3 m² (950 sq.ft.) approx

This floor plan is for illustrative purposes only. It is not drawn to scale. Any measurements, floor areas (including any total floor area), openings and orientation are approximate. No details are guaranteed, they cannot be relied upon for any purpose and they do not form part of any agreement. No liability is taken for any error, omission or misstatement. A party must rely upon its own inspection(s). Powered by www.propertybox.io


william
h brown



check out more properties at williamhbrown.co.uk



welcome to

Leicester Avenue, Gaywood, KING'S LYNN

- Semi Detached Home
- Three Bedrooms
- Kitchen/Diner
- Lounge
- Enclosed Rear Garden

Tenure: Freehold EPC Rating: Awaited
Council Tax Band: A

£180,000



Please note the marker reflects the
postcode not the actual property

check out more properties at williamhbrown.co.uk



Property Ref:
KLN119563 - 0002

1. MONEY LAUNDERING REGULATIONS Intending purchasers will be asked to produce identification documentation at a later stage and we would ask for your co-operation in order that there is no delay in agreeing the sale. 2. These particulars do not constitute part or all of an offer or contract. 3. The measurements indicated are supplied for guidance only and as such must be considered incorrect. Potential buyers are advised to recheck measurements before committing to any expense. 4. We have not tested any apparatus, equipment, fixtures or services and it is in the buyers interest to check the working condition of any appliances. 5. Where an EPC, or a Home Report (Scotland only) is held for this property, it is available for inspection at the branch by appointment. If you require a printed version of a Home Report, you will need to pay a reasonable production charge reflecting printing and other costs. 6. We are not able to offer an opinion either written or verbal on the content of these reports and this must be obtained from your legal representative. 7. Whilst we take care in preparing these reports, a buyer should ensure that his/her legal representative confirms as soon as possible all matters relating to title including the extent and boundaries of the property and other important matters before exchange of contracts.

William H Brown is a trading name of Sequence (UK) Limited which is registered in England and Wales under company number 4268443, Registered Office is Cumbria House, 16-20 Hockliffe Street, Leighton Buzzard, Bedfordshire, LU7 1GN. VAT Registration Number is 500 2481 05.



01553 771337



KingsLynn@williamhbrown.co.uk



40-42 King Street, KING'S LYNN, Norfolk, PE30 1ES



williamhbrown.co.uk