



Russett Close, King's Lynn, PE30 3HB

welcome to

Russett Close, King's Lynn

Well presented three bedroom semi detached house with off road parking and garage. Open plan lounge/diner, kitchen and spacious conservatory leading to a well manicured enclosed rear garden. Viewing highly recommended!



Entrance Hall

Double glazed front door with side panel windows. Storage cupboard. Radiator. Stairs to first floor.

Lounge/ Diner

21' 10" x 11' 7" (6.65m x 3.53m)
Double glazed windows to the front and rear. Two radiators. Feature fireplace. Television point.

Kitchen

10' x 8' 5" (3.05m x 2.57m)
Fitted with wall and base units with worktops over. One and a half bowl sink with mixer tap. Space for cooker with extractor fan above. Space for under counter fridge. Space and plumbing for dishwasher.

Conservatory

18' 6" x 10' 10" (5.64m x 3.30m)
Brick and UPVC construction under polycarbonate roof. Tiled flooring. Patio doors to the decking and patio seating area and rear garden.

Bedroom One

10' 11" x 10' 6" (3.33m x 3.20m)
Double glazed window. Radiator. Ceiling fan.

Bedroom Two

11' 3" x 8' 6" max (3.43m x 2.59m max)
Double glazed window. Radiator.

Bedroom Three

8' 3" x 7' 7" max (2.51m x 2.31m max)
Double glazed window. Radiator.

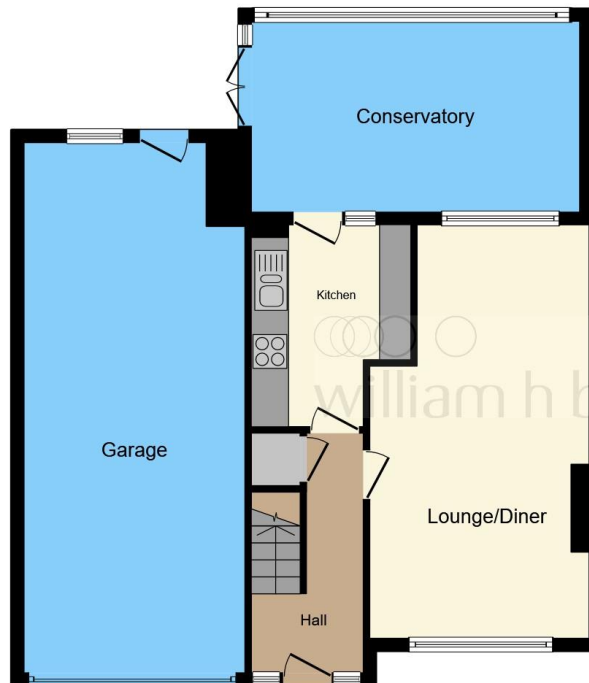
Shower Room

Vanity unit with wash hand basin and low level WC. Wall units Shower with handheld and rainfall shower heads. Heated towel rail. Tiled walls. Airing cupboard. Double glazed window.

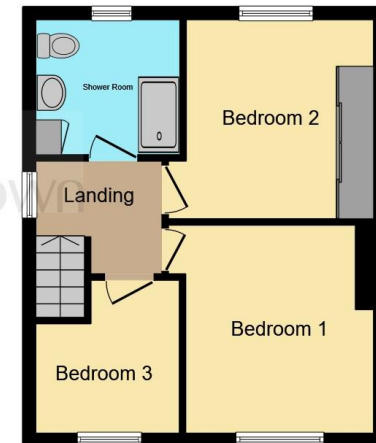
Outside

The front of the property offers off road parking and access to a tandem garage. Laid to lawn with shrubs to the borders. Side access to the rear garden.

Enclosed rear garden with paved and decked seating area. Mostly laid to lawn garden with a further covered seating area, flower beds and storage unit. Rear access to the garage.



Ground Floor



First Floor

This floor plan is for illustrative purposes only. It is not drawn to scale. Any measurements, floor areas (including any total floor area), openings and orientation are approximate. No details are guaranteed, they cannot be relied upon for any purpose and they do not form part of any agreement. No liability is taken for any error, omission or misstatement. A party must rely upon its own inspection(s). Powered by www.focalagent.com



view this property online williamhbrown.co.uk/Property/KLN113834



welcome to

Russett Close, King's Lynn

- Semi Detached House
- Three Bedrooms
- Spacious Conservatory
- Open Plan Lounge/Diner
- Well Manicured Gardens

Tenure: Freehold EPC Rating: D
Council Tax Band: B

£310,000



Please note the marker reflects the
postcode not the actual property

view this property online williamhbrown.co.uk/Property/KLN113834



Property Ref:
KLN113834 - 0004

1. MONEY LAUNDERING REGULATIONS Intending purchasers will be asked to produce identification documentation at a later stage and we would ask for your co-operation in order that there is no delay in agreeing the sale. 2. These particulars do not constitute part or all of an offer or contract. 3. The measurements indicated are supplied for guidance only and as such must be considered incorrect. Potential buyers are advised to recheck measurements before committing to any expense. 4. We have not tested any apparatus, equipment, fixtures or services and it is in the buyers interest to check the working condition of any appliances. 5. Where an EPC, or a Home Report (Scotland only) is held for this property, it is available for inspection at the branch by appointment. If you require a printed version of a Home Report, you will need to pay a reasonable production charge reflecting printing and other costs. 6. We are not able to offer an opinion either written or verbal on the content of these reports and this must be obtained from your legal representative. 7. Whilst we take care in preparing these reports, a buyer should ensure that his/her legal representative confirms as soon as possible all matters relating to title including the extent and boundaries of the property and other important matters before exchange of contracts.

William H Brown is a trading name of Sequence (UK) Limited which is registered in England and Wales under company number 4268443, Registered Office is Cumbria House, 16-20 Hockliffe Street, Leighton Buzzard, Bedfordshire, LU7 1GN. VAT Registration Number is 500 2481 05.



william h brown



01553 771337



KingsLynn@williamhbrown.co.uk



40-42 King Street, KING'S LYNN, Norfolk, PE30 1ES



williamhbrown.co.uk