



Suffield Way, King's Lynn, PE30 3DL

welcome to

Suffield Way, King's Lynn

Located on the popular 'Grange' Estate is this spacious three bedroom detached house which is being offered with no onward chain. Viewing highly recommended.



Double Glazed Entrance Door To

Entrance Porch

Double glazed door to:-

Entrance Hall

Radiator, stairs to first floor, radiator

Lounge/ Dining Room

22' 10" x 10' 9" (6.96m x 3.28m)

Double glazed window, radiator, double glazed sliding doors to rear

Kitchen

16' 4" x 10' 5" (4.98m x 3.17m)

Range of base and wall units, roll edge work top, inset stainless steel sink with mixer tap over, space for fridge freezer, dishwasher and washing machine, built-in oven, gas hob, extractor over, part tiled walls, wood effect laminate floor, two double glazed windows, double glazed door to rear, radiator

First Floor Landing

Loft access, storage cupboard housing gas boiler

Bedroom One

12' x 10' (3.66m x 3.05m)

Double glazed window, radiator, built-in wardrobe

Bedroom Two

10' 8" x 8' 6" (3.25m x 2.59m)

Double glazed window, radiator, built-in wardrobe

Bedroom Three

10' 6" x 10' 2" (3.20m x 3.10m)

Double glazed window, radiator

Shower Room

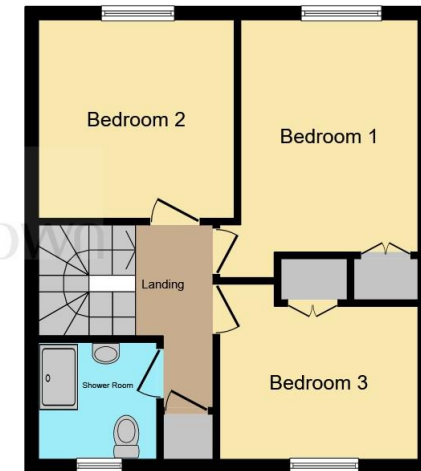
Large walk-in shower cubicle, low level WC, wash hand basin, tiled walls, heated towel rail, wood effect laminate floor, double glazed window

Outside

To the front is a gravel driveway leading to a single garage with up and over door, power and light. There is an enclosed rear garden which is laid mainly to lawn.



Ground Floor



First Floor

This floor plan is for illustrative purposes only. It is not drawn to scale. Any measurements, floor areas (including any total floor area), openings and orientation are approximate. No details are guaranteed, they cannot be relied upon for any purpose and they do not form part of any agreement. No liability is taken for any error, omission or misstatement. A party must rely upon its own inspection(s). Powered by www.focalagent.com



check out more properties at williamhbrown.co.uk



welcome to

Suffield Way, King's Lynn

- Popular "Grange" Estate
- Detached House
- Three Bedrooms
- Lounge/Diner
- 16ft Kitchen

Tenure: Freehold EPC Rating: D

£280,000



Please note the marker reflects the postcode not the actual property

check out more properties at williamhbrown.co.uk



Property Ref:
KLN118721 - 0002

1. MONEY LAUNDERING REGULATIONS Intending purchasers will be asked to produce identification documentation at a later stage and we would ask for your co-operation in order that there is no delay in agreeing the sale. 2. These particulars do not constitute part or all of an offer or contract. 3. The measurements indicated are supplied for guidance only and as such must be considered incorrect. Potential buyers are advised to recheck measurements before committing to any expense. 4. We have not tested any apparatus, equipment, fixtures or services and it is in the buyers interest to check the working condition of any appliances. 5. Where an EPC, or a Home Report (Scotland only) is held for this property, it is available for inspection at the branch by appointment. If you require a printed version of a Home Report, you will need to pay a reasonable production charge reflecting printing and other costs. 6. We are not able to offer an opinion either written or verbal on the content of these reports and this must be obtained from your legal representative. 7. Whilst we take care in preparing these reports, a buyer should ensure that his/her legal representative confirms as soon as possible all matters relating to title including the extent and boundaries of the property and other important matters before exchange of contracts.

William H Brown is a trading name of Sequence (UK) Limited which is registered in England and Wales under company number 4268443, Registered Office is Cumbria House, 16-20 Hockliffe Street, Leighton Buzzard, Bedfordshire, LU7 1GN. VAT Registration Number is 500 2481 05.



01553 771337



KingsLynn@williamhbrown.co.uk



40-42 King Street, KING'S LYNN, Norfolk, PE30 1ES



williamhbrown.co.uk