



**Cherry Tree Drive, West Lynn, King's Lynn, PE34 3LA**

**welcome to**

## **Cherry Tree Drive, West Lynn King's Lynn**

Located in the popular village of West Lynn is this well presented three bedroom detached bungalow boasting spacious accommodation, off road parking and a garage.

### **Entrance Hallway**

Door to front aspect leads into the property , radiator, built in storage cupboards housing gas boiler

### **Kitchen**

14' 5" x 9' 3" ( 4.39m x 2.82m )

Base and wall units, sink with mixer tap, space for washing machine, space for freestanding fridge freezer, electric oven and hob with extractor hood, double glazed windows, door access to rear garden.

### **Lounge**

15' 1" x 12' 11" ( 4.60m x 3.94m )

Double glazed windows to front and side, gas fireplace, radiator

### **Bedroom One**

9' 9" x 9' 9" ( 2.97m x 2.97m )

Double glazed window to front, radiator

### **Bedroom Two**

11' 11" max including wardrobes x 9' 1" ( 3.63m max including wardrobes x 2.77m )

Double glazed window to side, radiator, built in wardrobes

### **Bedroom Three**

11' 10" x 9' 11" ( 3.61m x 3.02m )

Door through to conservatory, radiator, UPVC window

### **Conservatory**

UPVC windows, double doors to garden, radiator

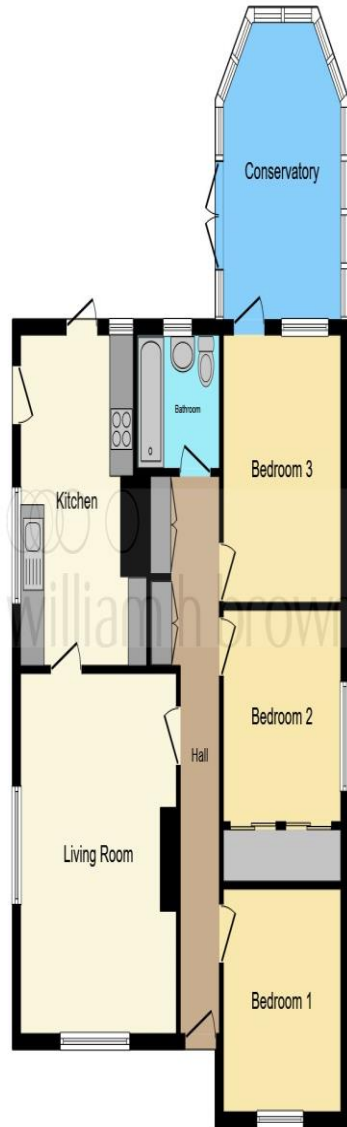
### **Bathroom**

bath with shower over, wash hand basin and W/c, radiator

### **Outside**

The front of the property offers a view of the historic St Peter's Church and features a large driveway providing off-road parking, leading to single garage

The rear garden is well stocked with a range of plants and tree's, and features a small pond, a patio, shed and area's laid to gravel.



This floor plan is for illustrative purposes only. It is not drawn to scale. Any measurements, floor areas (including any total floor area), openings and orientation are approximate. No details are guaranteed, they cannot be relied upon for any purpose and they do not form part of any agreement. No liability is taken for any error, omission or misstatement. A party must rely upon its own inspection(s). Powered by [www.focalagent.com](http://www.focalagent.com)



**welcome to**  
**Cherry Tree Drive,**  
**West Lynn King's Lynn**

- Spacious detached bungalow
- Popular village location
- Three double bedrooms
- Kitchen and Lounge
- Front and rear garden

Tenure: Freehold EPC Rating: D

**£280,000**



**view this property online** [williamhbrown.co.uk/Property/KLN118202](http://williamhbrown.co.uk/Property/KLN118202)



Property Ref:  
KLN118202 - 0005

1. MONEY LAUNDERING REGULATIONS Intending purchasers will be asked to produce identification documentation at a later stage and we would ask for your co-operation in order that there is no delay in agreeing the sale. 2. These particulars do not constitute part or all of an offer or contract. 3. The measurements indicated are supplied for guidance only and as such must be considered incorrect. Potential buyers are advised to recheck measurements before committing to any expense. 4. We have not tested any apparatus, equipment, fixtures or services and it is in the buyers interest to check the working condition of any appliances. 5. Where an EPC, or a Home Report (Scotland only) is held for this property, it is available for inspection at the branch by appointment. If you require a printed version of a Home Report, you will need to pay a reasonable production charge reflecting printing and other costs. 6. We are not able to offer an opinion either written or verbal on the content of these reports and this must be obtained from your legal representative. 7. Whilst we take care in preparing these reports, a buyer should ensure that his/her legal representative confirms as soon as possible all matters relating to title including the extent and boundaries of the property and other important matters before exchange of contracts.

William H Brown is a trading name of Sequence (UK) Limited which is registered in England and Wales under company number 4268443, Registered Office is Cumbria House, 16-20 Hockliffe Street, Leighton Buzzard, Bedfordshire, LU7 1GN. VAT Registration Number is 500 2481 05.



william h brown



**01553 771337**



[KingsLynn@williamhbrown.co.uk](mailto:KingsLynn@williamhbrown.co.uk)



40-42 King Street, KING'S LYNN, Norfolk, PE30 1ES



[williamhbrown.co.uk](http://williamhbrown.co.uk)