



Frederick Thatcher Place, Battle TN33 0HW

welcome to

Frederick Thatcher Place, Battle

This spacious well-presented mid-terraced two-bedroom house modern throughout that offers accommodation set out over two floors with gas central heating. A favoured and convenient position to nearby Battle High Street with local amenities, schools and a mainline station serving London Charing Cross. The property is located to the rear of this friendly and secure development and with views to the communal lawned gardens.

The spacious and bright accommodation comprises an entrance hall, cloakroom, lounge with double bi-fold doors to modern kitchen diner, two double bedrooms, a spacious family bathroom, en-suite shower room and dressing room to master bedroom. Outside there are beautifully maintained communal gardens and two owned parking spaces.



Access Via

Private front door and small patio space.

Entrance Hall

with solid wood flooring, built in storage cupboard, understairs storage cupboard, fuse board and radiator.

Cloakroom

with solid wood floor, low level wc, wash hand basin, electric radiator, tiled walls and side aspect single glazed window with secondary glazing

Lounge

17' 7" x 14' 4" (5.36m x 4.37m)

with carpet flooring, two radiators, gas fireplace, built in storage cupboard and shelves, front aspect single glazed window with shutters, view over the meadow and woods and double door leading to

Kitchen / Diner

17' 7" x 10' 10" (5.36m x 3.30m)

with karndean flooring, fitted base, wall and tower units, radiator, quartz stone worktops, 5 gas ring hob, extractor, combi oven, double oven, warming draw, two bowl sink and integrated appliances dishwasher, washing machine, under counter freezer, fridge freezer and single glazed windows to front and rear aspect with bespoke made blinds.

Landing

with carpet runner with stair rods going up the stairs, radiator, built in storage cupboard, airing cupboard and side aspect single glazed window.

Bathroom

with tiled floor, two drawer vanity unit, wash hand basin, low level wc, towel radiator, enamelled metal bathtub and side aspect single glazed window

Bedroom One

11' 9" x 15' 2" (3.58m x 4.62m)

with carpet flooring, built in storage cupboard, radiator, main loft hatch and front aspect single glazed window with shutters looking out to communal lawns.

En-Suite

with LVT flooring, fitted bathroom units, low level wc, wash hand basin, extractor, large shower with slide door and radiator.

Dressing Room

10' x 6' (3.05m x 1.83m)

with carpet flooring, built in wardrobes and front aspect single glazed window with shutters looking out to meadows.

Bedroom Two

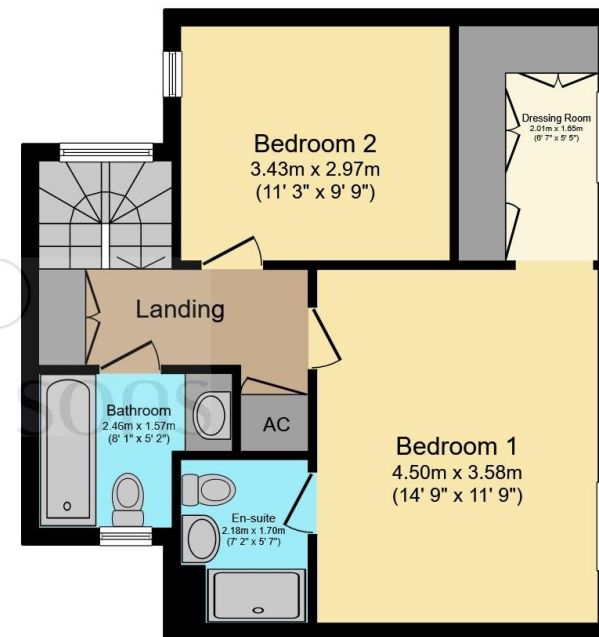
9' 11" x 11' 3" (3.02m x 3.43m)

with carpet flooring, radiator and rear aspect single glazed window with courtyard views

Two Owned Spaces



Ground Floor



First Floor

Total floor area 96.6 m² (1,039 sq.ft.) approx

This floor plan is for illustrative purposes only. It is not drawn to scale. Any measurements, floor areas (including any total floor area), openings and orientation are approximate. No details are guaranteed, they cannot be relied upon for any purpose and they do not form part of any agreement. No liability is taken for any error, omission or misstatement. A party must rely upon its own inspection(s). Powered by www.focalagent.com



view this property online fox-and-sons.co.uk/Property/HAS121629



welcome to

Frederick Thatcher Place, Battle

- TWO BEDROOMS
- MASTER BEDROOM WITH EN SUITE AND DRESSING ROOM
- MID-TERRACED HOUSE
- MODERN, FULLY INTEGRATED KITCHEN AND FAMILY BATHROOM
- COMMUNAL LAWNS
- TWO OWNED PARKING SPACES

Tenure: Freehold EPC Rating: D

£475,000



Please note the marker reflects the postcode not the actual property

view this property online fox-and-sons.co.uk/Property/HAS121629



Property Ref:
HAS121629 - 0003

1. MONEY LAUNDERING REGULATIONS Intending purchasers will be asked to produce identification documentation at a later stage and we would ask for your co-operation in order that there is no delay in agreeing the sale. 2. These particulars do not constitute part or all of an offer or contract. 3. The measurements indicated are supplied for guidance only and as such must be considered incorrect. Potential buyers are advised to recheck measurements before committing to any expense. 4. We have not tested any apparatus, equipment, fixtures or services and it is in the buyers interest to check the working condition of any appliances. 5. Where an EPC, or a Home Report (Scotland only) is held for this property, it is available for inspection at the branch by appointment. If you require a printed version of a Home Report, you will need to pay a reasonable production charge reflecting printing and other costs. 6. We are not able to offer an opinion either written or verbal on the content of these reports and this must be obtained from your legal representative. 7. Whilst we take care in preparing these reports, a buyer should ensure that his/her legal representative confirms as soon as possible all matters relating to title including the extent and boundaries of the property and other important matters before exchange of contracts.

Fox & Sons is a trading name of Sequence (UK) Limited which is registered in England and Wales under company number 4268443, Registered Office is Cumbria House, 16-20 Hockliffe Street, Leighton Buzzard, Bedfordshire, LU7 1GN. VAT Registration Number is 500 2481 05.


fox & sons



01424 722177



hastings@fox-and-sons.co.uk



33 Havelock Road, HASTINGS, East Sussex,
TN34 1BE



fox-and-sons.co.uk