



Lapthorn Close, Gosport PO13 0SR

welcome to

Laphorn Close, Gosport

Modern two bedroom terrace home ** In our opinion presented in good order through-out ** Garage with parking to the front ** Entrance hall ** Re-fitted kitchen ** Lounge/dining room ** Two double bedrooms ** Family bathroom ** Astro turf low maintenance rear garden ** Bridgemark location **

Entrance Hall

Composite front door, radiator, stairs to first floor with cupboard under.

Re-Fitted Kitchen

6' 9" x 8' 8" (2.06m x 2.64m)

Double glazed window to front aspect, matching range of eye and base level units with work surface over, tiled surrounds. stainless steel sink drainer, electric oven with hob and hood over, wall mounted boiler, integrated fridge/freezer, plumbing for washing machine.

Lounge/Dining Room

12' 8" max x 14' 4" max (3.86m max x 4.37m max)

Double glazed window and French style door to rear garden, radiator.

Landing

Access to loft void.

Bedroom One

13' max x 10' 4" max (3.96m max x 3.15m max)

Two double glazed windows to rear aspect, radiator.

Bedroom Two

13' max x 7' max (3.96m max x 2.13m max)

Double glazed window to front aspect, radiator.

Family Bathroom

Obscure double glazed window to front aspect, wc, wash hand basin, bath with shower over and curtain, tiled surrounds, radiator, storage cupboard.



**Rear Garden**

decking extends to astro turf area, enclosed to perimeters, pedestrian rear access.

Front Garden

Stoned area, pathway to front door.

Garage

Up and over door, with parking space in front.



view this property online fox-and-sons.co.uk/Property/GOS112655



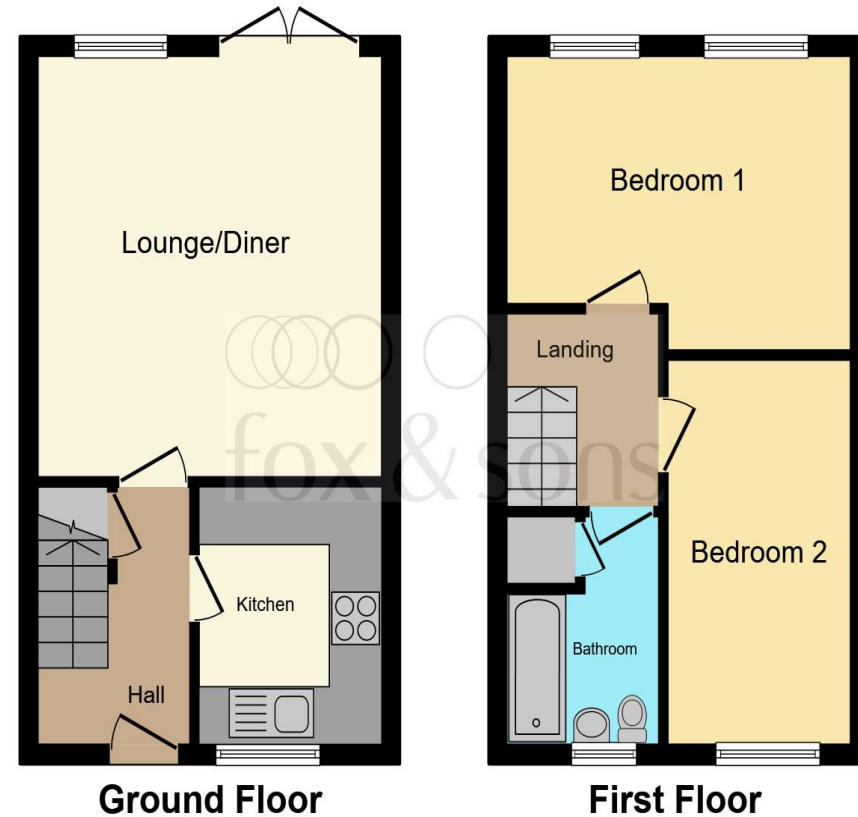
welcome to

Lapthorn Close, Gosport

- Two bedroom terraced home
- Located in Bridgemary
- Garage and parking space to the front
- Re-fitted kitchen
- Lounge/dining room

Tenure: Freehold EPC Rating: C
Council Tax Band: B

£260,000



This floor plan is for illustrative purposes only. It is not drawn to scale. Any measurements, floor areas (including any total floor area), openings and orientation are approximate. No details are guaranteed, they cannot be relied upon for any purpose and they do not form part of any agreement. No liability is taken for any error, omission or misstatement. A party must rely upon its own inspection(s). Powered by www.focalagent.com

view this property online fox-and-sons.co.uk/Property/GOS112655



Property Ref:
GOS112655 - 0003

1. MONEY LAUNDERING REGULATIONS Intending purchasers will be asked to produce identification documentation at a later stage and we would ask for your co-operation in order that there is no delay in agreeing the sale. 2. These particulars do not constitute part or all of an offer or contract. 3. The measurements indicated are supplied for guidance only and as such must be considered incorrect. Potential buyers are advised to recheck measurements before committing to any expense. 4. We have not tested any apparatus, equipment, fixtures or services and it is in the buyers interest to check the working condition of any appliances. 5. Where an EPC, or a Home Report (Scotland only) is held for this property, it is available for inspection at the branch by appointment. If you require a printed version of a Home Report, you will need to pay a reasonable production charge reflecting printing and other costs. 6. We are not able to offer an opinion either written or verbal on the content of these reports and this must be obtained from your legal representative. 7. Whilst we take care in preparing these reports, a buyer should ensure that his/her legal representative confirms as soon as possible all matters relating to title including the extent and boundaries of the property and other important matters before exchange of contracts.

Fox & Sons is a trading name of Sequence (UK) Limited which is registered in England and Wales under company number 4268443, Registered Office is Cumbria House, 16-20 Hockliffe Street, Leighton Buzzard, Bedfordshire, LU7 1GN. VAT Registration Number is 500 2481 05.


fox & sons



023 9250 3733



Gosport@fox-and-sons.co.uk



10 High Street, GOSPORT, Hampshire, PO12 1BX



fox-and-sons.co.uk