



Ayling Close, Gosport PO13 9SA

welcome to

Ayling Close, Gosport

** Two Bedroom First Floor Maisonette ** No Onward Chain ** Private Enclosed Rear Garden ** Two Double Bedrooms ** Gas Central Heating **
Double Glazing **

##Invalid Field Name##

Entrance Hall

Hallway

Lounge

16' max x 10' 11" max (4.88m max x 3.33m max)

Kitchen

10' 1" max x 8' 9" max (3.07m max x 2.67m max)

Bedroom One

15' 7" max x 9' 2" max (4.75m max x 2.79m max)

Bedroom Two

10' 7" max x 10' 2" max (3.23m max x 3.10m max)

Bathroom

Rear Garden





view this property online fox-and-sons.co.uk/Property/GOS111877



welcome to

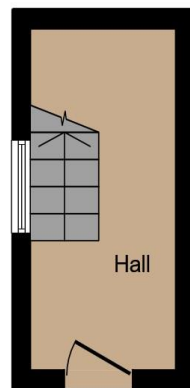
Ayling Close, Gosport

- Two Bedroom First Floor Maisonette
- No Onward Chain
- Private Enclosed Rear Garden
- Two Double Bedrooms
- Gas Central Heating

Tenure: Leasehold EPC Rating: C

This is a Leasehold property. We are awaiting further details about the Term of the lease. For further information please contact the branch. Please note additional fees could be incurred for items such as Leasehold packs.

£165,000



Ground Floor



First Floor

This floor plan is for illustrative purposes only. It is not drawn to scale. Any measurements, floor areas (including any total floor area), openings and orientation are approximate. No details are guaranteed, they cannot be relied upon for any purpose and they do not form part of any agreement. No liability is taken for any error, omission or misstatement. A party must rely upon its own inspection(s). Powered by www.focalagent.com

view this property online fox-and-sons.co.uk/Property/GOS111877



Property Ref:
GOS111877 - 0004

1. MONEY LAUNDERING REGULATIONS Intending purchasers will be asked to produce identification documentation at a later stage and we would ask for your co-operation in order that there is no delay in agreeing the sale. 2. These particulars do not constitute part or all of an offer or contract. 3. The measurements indicated are supplied for guidance only and as such must be considered incorrect. Potential buyers are advised to recheck measurements before committing to any expense. 4. We have not tested any apparatus, equipment, fixtures or services and it is in the buyers interest to check the working condition of any appliances. 5. Where an EPC, or a Home Report (Scotland only) is held for this property, it is available for inspection at the branch by appointment. If you require a printed version of a Home Report, you will need to pay a reasonable production charge reflecting printing and other costs. 6. We are not able to offer an opinion either written or verbal on the content of these reports and this must be obtained from your legal representative. 7. Whilst we take care in preparing these reports, a buyer should ensure that his/her legal representative confirms as soon as possible all matters relating to title including the extent and boundaries of the property and other important matters before exchange of contracts.



023 9250 3733



Gosport@fox-and-sons.co.uk



10 High Street, GOSPORT, Hampshire, PO12 1BX



fox-and-sons.co.uk