



**St. Faiths Close, Gosport PO12 3PP**



**welcome to**

## **St. Faiths Close, Gosport**

\*\* Two Bedrooms \*\* Off Road Parking \*\* Downstairs WC \*\* Enclosed Rear Garden \*\* Fitted Kitchen \*

### **Entrance Hall**

UPVC door to front access, stairs to first floor landing, understairs storage cupboard, radiator.

### **Cloakroom**

Wash hand basin, wc, tiled surrounds, radiator.

### **Kitchen**

9' 7" x 5' 9" ( 2.92m x 1.75m )

UPVC double glazed window to front elevation, matching wall and base units, work surfaces, stainless steel sink and drainer unit, integrated oven, hob, extractor hood, space for fridge/freezer, integrated washing machine, tiled surrounds.

### **Lounge/Diner**

14' 5" x 12' 3" ( 4.39m x 3.73m )

UPVC double glazed patio doors to rear access, radiator, tv point, feature fire surround, with electric flame effect fire.

### **First Floor Landing**

Access to loft space, doors to:





### **Bedroom 1**

12' 1" max x 11' 1" max ( 3.68m max x 3.38m max )  
UPVC double glazed window to rear elevation,  
range of fitted mirrored wardrobes, radiator.

### **Bedroom 2**

10' 1" max x 8' 11" max ( 3.07m max x 2.72m max )  
UPVC double glazed window to front elevation,  
fitted double wardrobes, radiator.

### **Bathroom**

Bath, wash hand basin, wc, heated towel rail,  
extractor fan, tiled walls, tiled flooring.

### **Outside**

To the front the garden has off road parking for  
multiple vehicles. To the rear the garden is laid to  
patio with a shingle section, shed, rear pedestrian  
access and enclosed by panel fencing.



***view this property online*** [fox-and-sons.co.uk/Property/GOS111658](http://fox-and-sons.co.uk/Property/GOS111658)



welcome to

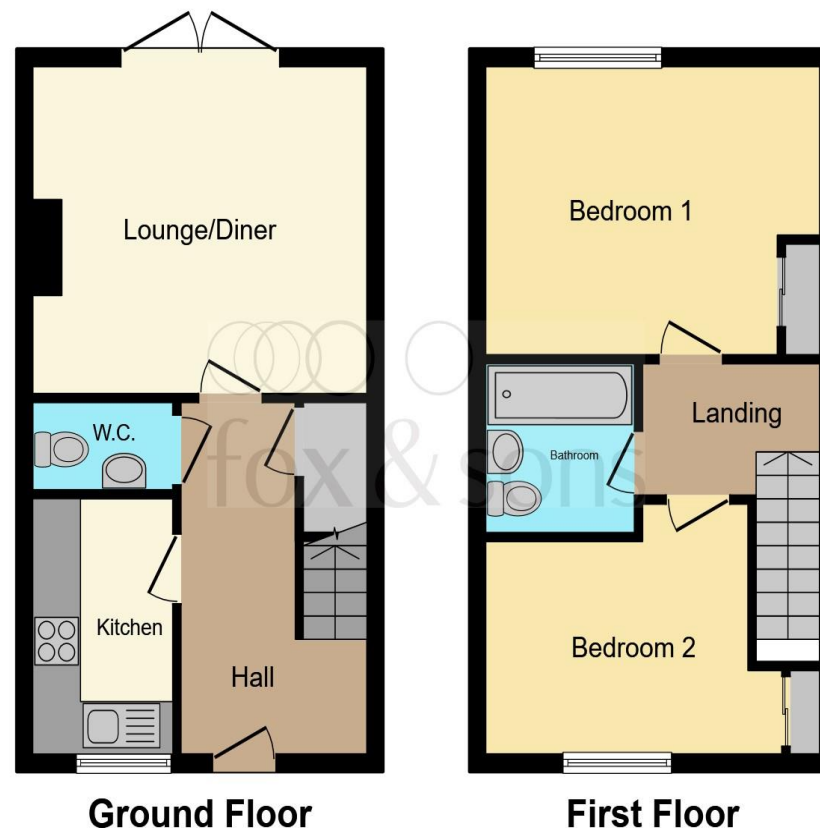
## St. Faiths Close, Gosport

- offers over £250,000
- Two Bedrooms
- Off Road Parking
- Fitted Kitchen
- Gas Central Heating

Tenure: Freehold EPC Rating: C

offers over

**£250,000**



This floor plan is for illustrative purposes only. It is not drawn to scale. Any measurements, floor areas (including any total floor area), openings and orientation are approximate. No details are guaranteed, they cannot be relied upon for any purpose and they do not form part of any agreement. No liability is taken for any error, omission or misstatement. A party must rely upon its own inspection(s). Powered by [www.focalagent.com](http://www.focalagent.com)

**view this property online** [fox-and-sons.co.uk/Property/GOS111658](http://fox-and-sons.co.uk/Property/GOS111658)



Property Ref:  
GOS111658 - 0007

1. MONEY LAUNDERING REGULATIONS Intending purchasers will be asked to produce identification documentation at a later stage and we would ask for your co-operation in order that there is no delay in agreeing the sale. 2. These particulars do not constitute part or all of an offer or contract. 3. The measurements indicated are supplied for guidance only and as such must be considered incorrect. Potential buyers are advised to recheck measurements before committing to any expense. 4. We have not tested any apparatus, equipment, fixtures or services and it is in the buyers interest to check the working condition of any appliances. 5. Where an EPC, or a Home Report (Scotland only) is held for this property, it is available for inspection at the branch by appointment. If you require a printed version of a Home Report, you will need to pay a reasonable production charge reflecting printing and other costs. 6. We are not able to offer an opinion either written or verbal on the content of these reports and this must be obtained from your legal representative. 7. Whilst we take care in preparing these reports, a buyer should ensure that his/her legal representative confirms as soon as possible all matters relating to title including the extent and boundaries of the property and other important matters before exchange of contracts.

  
fox & sons



**023 9250 3733**



Gosport@fox-and-sons.co.uk



10 High Street, GOSPORT, Hampshire, PO12 1BX



**fox-and-sons.co.uk**