



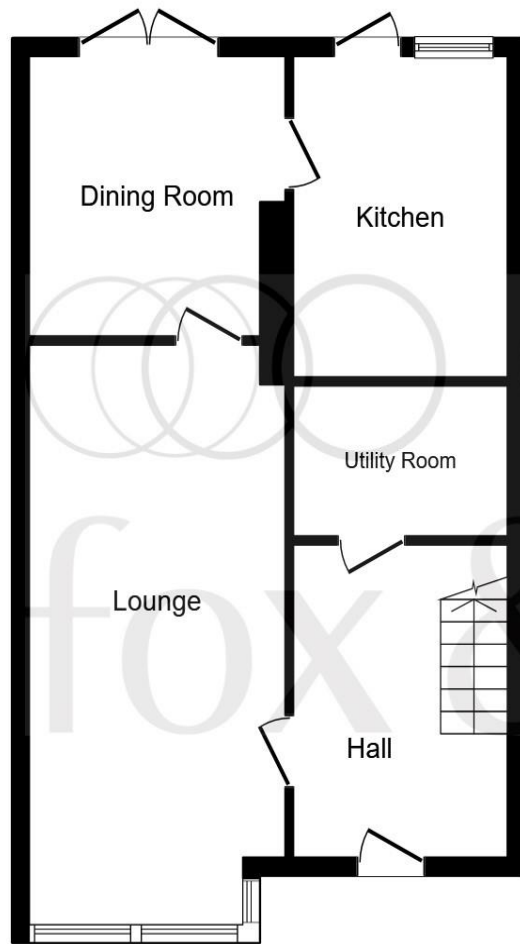
Timbermill Court, Fordingbridge SP6 1RG

welcome to

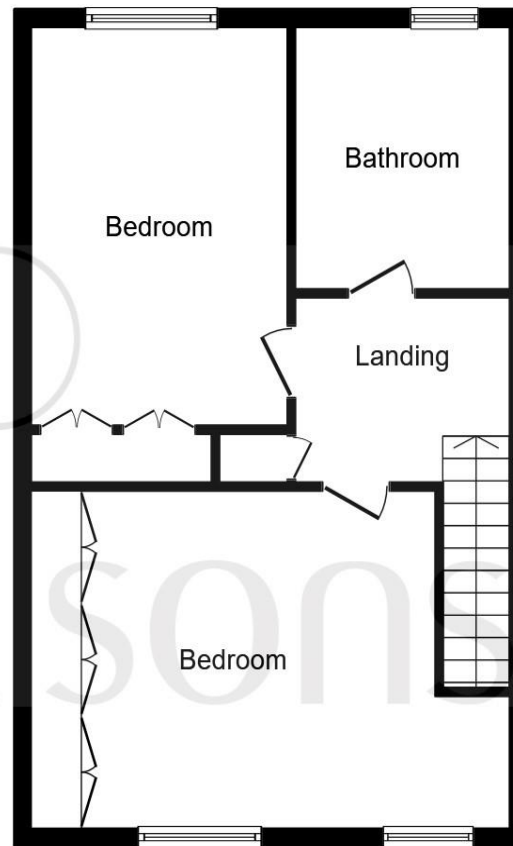
Timbermill Court, Fordingbridge

Beautiful two double bedroom home set amongst a well maintained and manicured gardens, yet still in the centre of Fordingbridge. Open plan living with french doors onto a private patio area. Fitted kitchen with integrated appliances. Downstairs shower room and upstairs bathroom and two bedrooms.





Ground Floor



First Floor

Lounge

21' 3" x 11' 4" (6.48m x 3.45m)

Dining Room

10' 3" x 9' 8" (3.12m x 2.95m)

Kitchen

11' 9" x 8' 5" (3.58m x 2.57m)

Bedroom 1

18' 9" x 12' 3" (5.71m x 3.73m)

Bedroom 2

16' 8" x 11' (5.08m x 3.35m)

Bathroom

9' 7" x 7' 4" (2.92m x 2.24m)

Ground Floor Shower Room

Hall

Landing

Garage

This floor plan is for illustrative purposes only. It is not drawn to scale. Any measurements, floor areas (including any total floor area), openings and orientation are approximate. No details are guaranteed, they cannot be relied upon for any purpose and they do not form part of any agreement. No liability is taken for any error, omission or misstatement. A party must rely upon its own inspection(s). Plan produced for Fox & Sons Powered by www.focalagent.com

welcome to

Timbermill Court, Fordingbridge

- Two Double Bedrooms
- Open Plan Lounge
- Vacant Possession
- Separate Garage
- Private Rear Garden

Tenure: Leasehold EPC Rating: D

£292,500



Please note the marker reflects the postcode not the actual property

view this property online fox-and-sons.co.uk/Property/FDB103328

see all our properties on zoopla.co.uk | rightmove.co.uk | fox-and-sons.co.uk

We currently hold lease details as displayed above, should you require further information please contact the branch. Please note additional fees could be incurred for items such as leasehold packs.



Property Ref:
FDB103328 - 0008

1. MONEY LAUNDERING REGULATIONS Intending purchasers will be asked to produce identification documentation at a later stage and we would ask for your co-operation in order that there is no delay in agreeing the sale. 2. These particulars do not constitute part or all of an offer or contract. 3. The measurements indicated are supplied for guidance only and as such must be considered incorrect. Potential buyers are advised to recheck measurements before committing to any expense. 4. We have not tested any apparatus, equipment, fixtures or services and it is in the buyers interest to check the working condition of any appliances. 5. Where an EPC, or a Home Report (Scotland only) is held for this property, it is available for inspection at the branch by appointment. If you require a printed version of a Home Report, you will need to pay a reasonable production charge reflecting printing and other costs. 6. We are not able to offer an opinion either written or verbal on the content of these reports and this must be obtained from your legal representative. 7. Whilst we take care in preparing these reports, a buyer should ensure that his/her legal representative confirms as soon as possible all matters relating to title including the extent and boundaries of the property and other important matters before exchange of contracts.


fox & sons



01425 652121



fordingbridge@fox-and-sons.co.uk



8 Salisbury Street, FORDINGBRIDGE,
Hampshire, SP6 1AF



fox-and-sons.co.uk