



**22 Greenfinch Close, Eastleigh, SO50 9JN**

**welcome to**

**22 Greenfinch Close, Eastleigh, SO50 9JN**

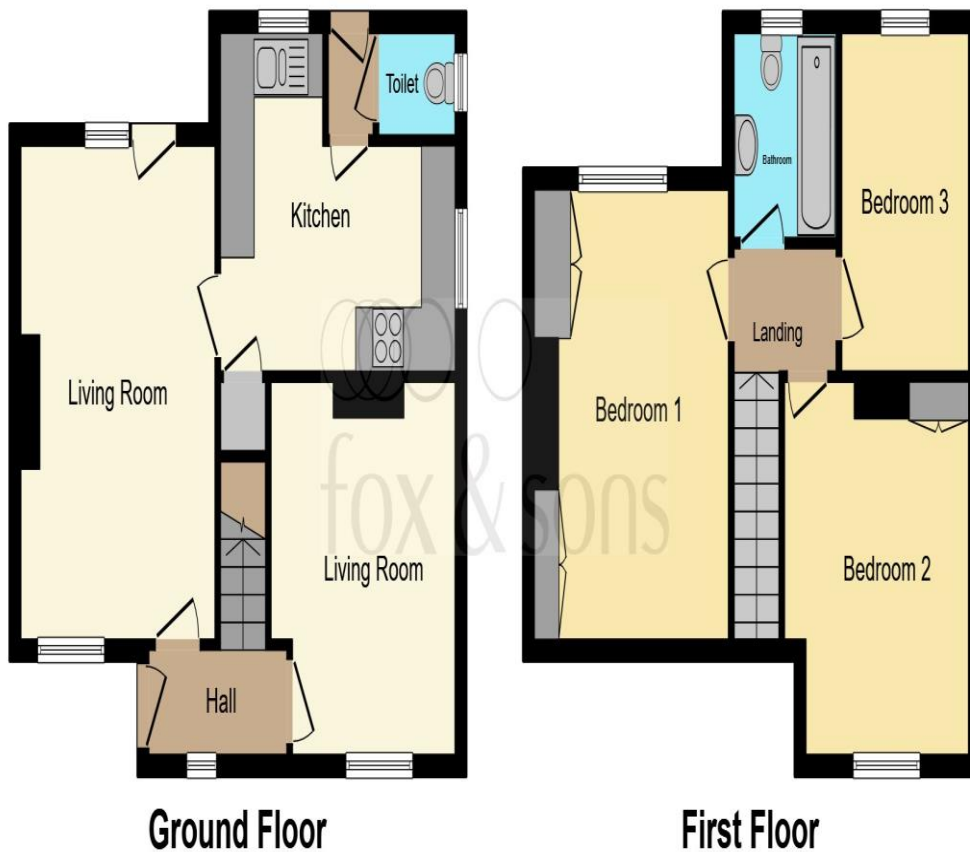
Fox & Sons are delighted to offer this three-bedroom semi-detached house, located in the sought after location of Eastleigh. Benefits from; Lounge, Dining room, Kitchen, downstairs Toilet, three Bedrooms with new carpets and built-in wardrobes, family Bathroom, generous size rear Garden, Driveway suitable for multiple cars.

Situated a short walking distance to the local shops, entertainment facilities and leisure centre. The main train station is a short walk away with Southampton Airport Parkway, which provides fast links to London, nearby. Both the M27 and the M3 are within close proximity, providing excellent commuter links. The property falls into Nightingale Primary, Shakespear Junior School & Crestwood Community School catchments areas.

***Internal viewing highly recommended!***

***Contact us directly to book now.***





### Auctioneer's Comments

This property is offered through Modern Method of Auction. Should you view, offer or bid your data will be shared with the Auctioneer, iamsold Limited. This method requires both parties to complete the transaction within 56 days, allowing buyers to proceed with mortgage finance (subject to lending criteria, affordability and survey).

The buyer is required to sign a reservation agreement and make payment of a non-refundable Reservation Fee of 4.5% of the purchase price including VAT, subject to a minimum of £6600.00 including VAT. This fee is paid in addition to purchase price and will be considered as part of the chargeable consideration for the property in the calculation for stamp duty liability. Buyers will be required to complete an identification process with iamsold and provide proof of how the purchase would be funded.

The property has a Buyer Information Pack containing documents about the property. The documents may not tell you everything you need to know, so you must complete your own due diligence before bidding. A sample of the Reservation Agreement and terms and conditions are contained within this pack. The buyer will also make payment of £300 inc VAT towards the preparation cost of the pack.

The estate agent and auctioneer may recommend the services of other providers to you, in which they

will be paid for the referral. These services are optional, and you will be advised of any payment, in writing before any services are accepted. Listing is subject to a start price and undisclosed reserve price that can change.

### Lounge

13' 6" plus recess x 13' 2" ( 4.11m plus recess x 4.01m )

### Dining Room

11' 5" plus recess x 9' 7" ( 3.48m plus recess x 2.92m )

### Bedroom One

14' 8" x 11' 9" ( 4.47m x 3.58m )

### Bedroom Two

10' 5" x 10' 4" ( 3.17m x 3.15m )

### Bedroom Three

10' 3" x 7' 6" ( 3.12m x 2.29m )

This floor plan is for illustrative purposes only. It is not drawn to scale. Any measurements, floor areas (including any total floor area), openings and orientation are approximate. No details are guaranteed, they cannot be relied upon for any purpose and they do not form part of any agreement. No liability is taken for any error, omission or misstatement. A party must rely upon its own inspection(s). Powered by [www.focalagent.com](http://www.focalagent.com)

welcome to

## 22 Greenfinch Close, Eastleigh, SO50 9JN

- Sale by Modern Auction (T&Cs apply)
- Subject to an undisclosed Reserve Price
- Buyers fees apply
- Three Bedroom Semi Detached Property
- Downstairs Toilet
- New Carpets
- INTERNAL VIEWING RECOMMENDED!1

Tenure: Freehold EPC Rating: D

guide price  
**£330,000**



Please note the marker reflects the  
postcode not the actual property

**view this property online** [fox-and-sons.co.uk/Property/ELH106153](https://fox-and-sons.co.uk/Property/ELH106153)



Property Ref:  
ELH106153 - 0003

1. MONEY LAUNDERING REGULATIONS Intending purchasers will be asked to produce identification documentation at a later stage and we will ask for your co-operation in order that there is no delay in agreeing the sale. 2. These particulars do not constitute part or all of an offer or contract. 3. The measurements indicated are supplied for guidance only and as such must be considered incorrect. Potential buyers are advised to recheck measurements before committing to any expense. 4. We have not tested any apparatus, equipment, fixtures or services and it is in the buyers interest to check the working condition of any appliances. 5. Where an EPC, or a Home Report (Scotland only) is held for this property, it is available for inspection at the branch by appointment. If you require a printed version of a Home Report, you will need to pay a reasonable production charge reflecting printing and other costs. 6. We are not able to offer an opinion either written or verbal on the content of these reports and this must be obtained from your legal representative. 7. Whilst we take care in preparing these reports, a buyer should ensure that his/her legal representative confirms as soon as possible all matters relating to title including the extent and boundaries of the property and other important matters before exchange of contracts.

  
fox & sons



**023 8061 8522**



[Eastleigh@fox-and-sons.co.uk](mailto:Eastleigh@fox-and-sons.co.uk)



44 Market Street, EASTLEIGH, Hampshire, SO50  
5RA



[fox-and-sons.co.uk](https://fox-and-sons.co.uk)