



Carew Views Carew Road, Eastbourne BN21 2JL



welcome to

Carew Views Carew Road, Eastbourne

Located in the highly sought after Upperton area is this 2 bedroom penthouse. This well presented property benefits from balcony with panoramic views across Eastbourne, allocated parking, garage, communal gardens, 2 bathrooms and 28" open plan living / dining room.



Communal Entrance Entrance Hall

Storage heater. Cupboard. Loft access. Stairs leading from ground floor.

Lounge

17' 7" into recess x 17' 5" (5.36m into recess x 5.31m)
Double glazed window to the front and side aspect.
Electric storage heaters.

Dining Area

9' 5" x 10' 4" max (2.87m x 3.15m max)
Double glazed patio doors to the roof terrace.

Kitchen

11' 4" x 7' 9" (3.45m x 2.36m)
A range of wall and base units with work top over incorporating a stainless steel sink and drainer unit. Double electric oven and hob. Space and plumbing for washing machine. Double glazed window to the side aspect.

Bedroom 1

15' 11" plus wardrobe x 12' 4" into recess (4.85m plus wardrobe x 3.76m into recess)
Double glazed window to the front aspect. Storage heater. Built in wardrobes.

En Suite

Comprising a bath with mixer taps and over head shower attachment. Low level W.C. Wash hand basin. Heated towel rail. Heater. Double glazed window to the front aspect.

Bedroom 2

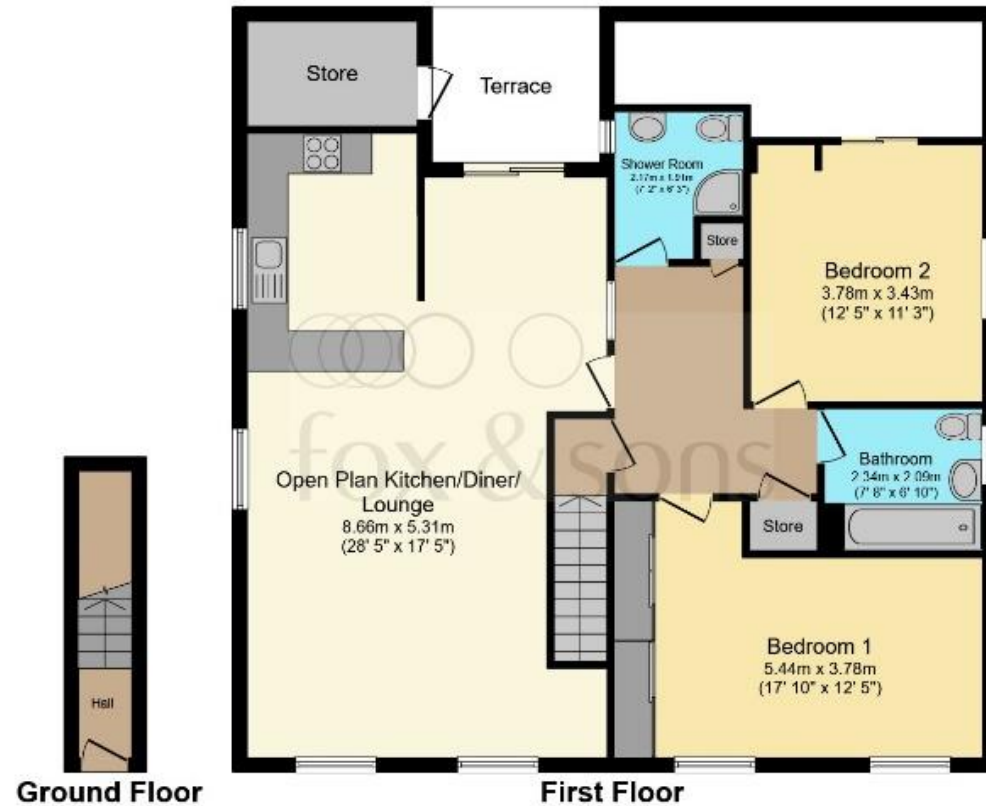
12' 3" max x 11' 2" max (3.73m max x 3.40m max)
Double glazed window to the side aspect. Storage heater.

Shower Room

Comprising a shower cubicle with over head shower attachment. Low level W.C. Wash hand basin. Double glazed window to the side aspect.

Roof Terrace

Private roof terrace with panoramic far reaching views of Eastbourne. Cupboard with plumbing for washing machine.



Total floor area 112.5 sq.m. (1,211 sq.ft.) approx

This floor plan is for illustrative purposes only. It is not drawn to scale. Any measurements, floor areas (including any total floor area), openings and orientation are approximate. No details are guaranteed, they cannot be relied upon for any purpose and they do not form part of any agreement. No liability is taken for any error, omission or misstatement. A party must rely upon its own inspection(s). Powered by www.focalagent.com



view this property online fox-and-sons.co.uk/Property/EBN117984



welcome to

Carew Views Carew Road, Eastbourne

- Two Bedroom Penthouse
- Allocated parking space
- Balcony with Panoramic Views
- Garage
- Sought After Upperton Location

Tenure: Leasehold EPC Rating: Awaiting

This is a Leasehold property with details as follows; Term of Lease 999 years from 25 Dec 1985. Should you require further information please contact the branch. Please Note additional fees could be incurred for items such as Leasehold packs.

£290,000



Please note the marker reflects the postcode not the actual property

view this property online fox-and-sons.co.uk/Property/EBN117984



Property Ref:
EBN117984 - 0003

1. MONEY LAUNDERING REGULATIONS Intending purchasers will be asked to produce identification documentation at a later stage and we would ask for your co-operation in order that there is no delay in agreeing the sale. 2. These particulars do not constitute part or all of an offer or contract. 3. The measurements indicated are supplied for guidance only and as such must be considered incorrect. Potential buyers are advised to recheck measurements before committing to any expense. 4. We have not tested any apparatus, equipment, fixtures or services and it is in the buyers interest to check the working condition of any appliances. 5. Where an EPC, or a Home Report (Scotland only) is held for this property, it is available for inspection at the branch by appointment. If you require a printed version of a Home Report, you will need to pay a reasonable production charge reflecting printing and other costs. 6. We are not able to offer an opinion either written or verbal on the content of these reports and this must be obtained from your legal representative. 7. Whilst we take care in preparing these reports, a buyer should ensure that his/her legal representative confirms as soon as possible all matters relating to title including the extent and boundaries of the property and other important matters before exchange of contracts.

Fox & Sons is a trading name of Sequence (UK) Limited which is registered in England and Wales under company number 4268443, Registered Office is Cumbria House, 16-20 Hockliffe Street, Leighton Buzzard, Bedfordshire, LU7 1GN. VAT Registration Number is 500 2481 05.


fox & sons



01323 410911



Eastbourne@fox-and-sons.co.uk



19 Cornfield Road, EASTBOURNE, East Sussex,
BN21 4QD



fox-and-sons.co.uk