



Queens Gardens, Eastbourne BN21 3EF



welcome to

Queens Gardens, Eastbourne

Well-presented one-bedroom first floor flat featuring a bright living space, separate kitchen, double bedroom, and bathroom. The property benefits from a private balcony, communal entrance, and on-street parking. Conveniently located close to local amenities and transport links.



Communal Entrance Hall

Entrance Hall

Lounge

19' 4" x 11' 11" (5.89m x 3.63m)

Double glazed bay window to the front aspect.
Fireplace.

Kitchen

15' 11" x 8' 4" (4.85m x 2.54m)

A range of wall and base units with work top over incorporating a stainless steel sink and drainer unit.
Electric oven with gas hob with cooker hood above.
Tiled splash back. Space for fridge / freezer. Space and plumbing for washing machine. Double glazed window to the front aspect.

Bedroom

11' 6" x 11' 4" (3.51m x 3.45m)

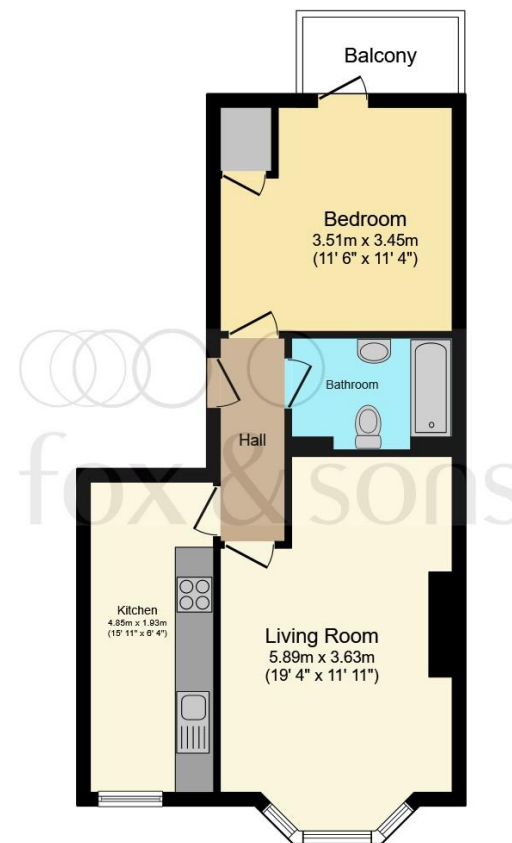
Double glazed window and door to the rear aspect leading to balcony. Built in cupboard. Radiator.

Bathroom

Comprising a bath with mixer taps. Low level W.C.
Wash hand basin. Extractor fan. Tiled throughout.
Spotlighting.

Private Balcony

Paved private balcony with cover.



Total floor area 49.8 m² (536 sq.ft.) approx

This floor plan is for illustrative purposes only. It is not drawn to scale. Any measurements, floor areas (including any total floor area), openings and orientation are approximate. No details are guaranteed, they cannot be relied upon for any purpose and they do not form part of any agreement. No liability is taken for any error, omission or misstatement. A party must rely upon its own inspection(s). Powered by www.focalagent.com



view this property online fox-and-sons.co.uk/Property/EBN120136



welcome to

Queens Gardens, Eastbourne

- ONE BEDROOM FIRST FLOOR FLAT
- PRIVATE BALCONY
- COMMUNAL ENTRANCE
- BRIGHT AND WELL PROPORTIONED LOUNGE
- GOOD SIZE DOUBLE BEDROOM

Tenure: Leasehold EPC Rating: C

Council Tax Band: A Service Charge: 1000.00

Ground Rent: 200.00

This is a Leasehold property with details as follows; Term of Lease 125 years from 25 Mar 2005.

Should you require further information please contact the branch. Please Note additional fees could be incurred for items such as Leasehold packs.

£170,000



Please note the marker reflects the postcode not the actual property

view this property online fox-and-sons.co.uk/Property/EBN120136



Property Ref:
EBN120136 - 0002

1. MONEY LAUNDERING REGULATIONS Intending purchasers will be asked to produce identification documentation at a later stage and we would ask for your co-operation in order that there is no delay in agreeing the sale. 2. These particulars do not constitute part or all of an offer or contract. 3. The measurements indicated are supplied for guidance only and as such must be considered incorrect. Potential buyers are advised to recheck measurements before committing to any expense. 4. We have not tested any apparatus, equipment, fixtures or services and it is in the buyers interest to check the working condition of any appliances. 5. Where an EPC, or a Home Report (Scotland only) is held for this property, it is available for inspection at the branch by appointment. If you require a printed version of a Home Report, you will need to pay a reasonable production charge reflecting printing and other costs. 6. We are not able to offer an opinion either written or verbal on the content of these reports and this must be obtained from your legal representative. 7. Whilst we take care in preparing these reports, a buyer should ensure that his/her legal representative confirms as soon as possible all matters relating to title including the extent and boundaries of the property and other important matters before exchange of contracts.

Fox & Sons is a trading name of Sequence (UK) Limited which is registered in England and Wales under company number 4268443, Registered Office is Cumbria House, 16-20 Hockliffe Street, Leighton Buzzard, Bedfordshire, LU7 1GN. VAT Registration Number is 500 2481 05.



fox & sons



01323 410911



Eastbourne@fox-and-sons.co.uk



19 Cornfield Road, EASTBOURNE, East Sussex,
BN21 4QD



fox-and-sons.co.uk