



Willowfield Road, Eastbourne BN22 8AX

welcome to

Willowfield Road, Eastbourne

A spacious two bedroom Victorian style mid terrace house in the popular Seaside area of Eastbourne. Comprising two double bedrooms, modern/dining room, bay fronted lounge, down stairs W.C. bathroom and generous rear garden.



Entrance Hall

Double glazed window and door to the front aspect.
Radiator.

Lounge

14' into bay x 10' 9" into recess (4.27m into bay x 3.28m into recess)
Double glazed bay window to the front aspect. Open fire place. Radiator.

Kitchen

16' 9" x 11' 8" (5.11m x 3.56m)
A range of wall and base units incorporating a solid wood top over with a sink and drainer unit. Double electric oven and hob with cooker hood above. Radiator. Cupboard. Integral dish washer. Under stairs cupboard. Double glazed window to the rear aspect.

Cloakroom

Comprising a low level W.C. Double glazed window to the rear aspect.

First Floor Landing

Stairs leading from ground floor to the first floor landing. Loft access.

Bedroom 1

15' 6" into recess x 11' 8" (4.72m into recess x 3.56m)
Double glazed window to the front aspect. Built in wardrobe. Radiator.

Bedroom 2

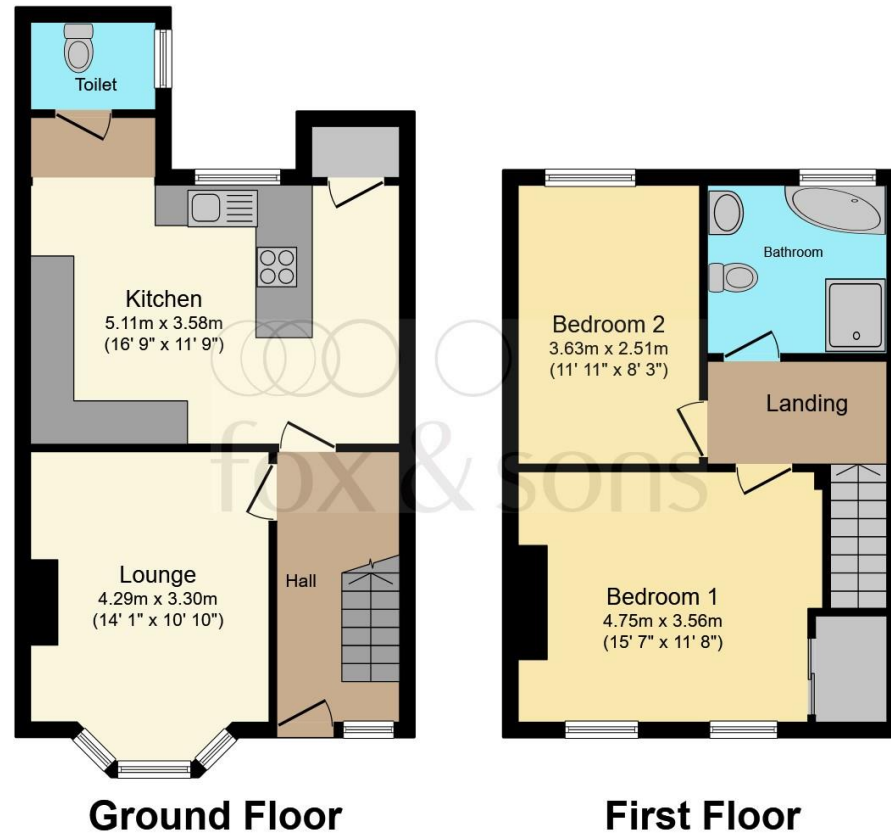
12' x 8' 3" (3.66m x 2.51m)
Double glazed window to the rear aspect. Radiator.

Bathroom

Comprising a bath with mixer taps. A walk in shower cubicle with over head shower attachment. Low level W.C. Wash hand basin. Heated towel rail. Double glazed window to the rear aspect.

Rear Garden

Low maintenance rear garden. Decked seating area. Hard standing area. Garden sheds.



Total floor area 81.6 m² (878 sq.ft.) approx

This floor plan is for illustrative purposes only. It is not drawn to scale. Any measurements, floor areas (including any total floor area), openings and orientation are approximate. No details are guaranteed, they cannot be relied upon for any purpose and they do not form part of any agreement. No liability is taken for any error, omission or misstatement. A party must rely upon its own inspection(s). Powered by www.focalagent.com



view this property online fox-and-sons.co.uk/Property/EBN120090



welcome to

Willowfield Road, Eastbourne

- VICTORIAN STYLE MID TERRACE HOUSE
- TWO DOUBLE BEDROOMS
- BAY FRONTED LOUNGE
- KITCHEN/DINING ROOM
- DOWNSTAIRS W.C

Tenure: Freehold EPC Rating: Awaited
Council Tax Band: B

guide price

£275,000 - £300,000



Please note the marker reflects the
postcode not the actual property

view this property online fox-and-sons.co.uk/Property/EBN120090



Property Ref:
EBN120090 - 0002

1. MONEY LAUNDERING REGULATIONS Intending purchasers will be asked to produce identification documentation at a later stage and we would ask for your co-operation in order that there is no delay in agreeing the sale. 2. These particulars do not constitute part or all of an offer or contract. 3. The measurements indicated are supplied for guidance only and as such must be considered incorrect. Potential buyers are advised to recheck measurements before committing to any expense. 4. We have not tested any apparatus, equipment, fixtures or services and it is in the buyers interest to check the working condition of any appliances. 5. Where an EPC, or a Home Report (Scotland only) is held for this property, it is available for inspection at the branch by appointment. If you require a printed version of a Home Report, you will need to pay a reasonable production charge reflecting printing and other costs. 6. We are not able to offer an opinion either written or verbal on the content of these reports and this must be obtained from your legal representative. 7. Whilst we take care in preparing these reports, a buyer should ensure that his/her legal representative confirms as soon as possible all matters relating to title including the extent and boundaries of the property and other important matters before exchange of contracts.

Fox & Sons is a trading name of Sequence (UK) Limited which is registered in England and Wales under company number 4268443, Registered Office is Cumbria House, 16-20 Hockliffe Street, Leighton Buzzard, Bedfordshire, LU7 1GN. VAT Registration Number is 500 2481 05.


fox & sons



01323 410911



Eastbourne@fox-and-sons.co.uk



19 Cornfield Road, EASTBOURNE, East Sussex,
BN21 4QD



fox-and-sons.co.uk