



Belle Vue Court Belle Vue Road, Eastbourne BN22 7RF

welcome to

Belle Vue Court Belle Vue Road,Eastbourne

A well presented two bedroom second (top) floor flat with garage situated within a cul-de-sac in the sought after Roselands. Conveniently situated yards from local shops and within comfortable walking distance of the seafront, schools and transport links to the town centre.



Entrance Hall

Storage cupboard.

Lounge

14' x 10' (4.27m x 3.05m)

Double glazed window. Electric radiator.

Kitchen

10' 5" x 8' 2" (3.17m x 2.49m)

A range of wall and base units with work top over incorporating a stainless steel sink and drainer unit. Space for cooker with extractor fan above. Space and plumbing for washing machine. Space for fridge / freezer. Double glazed window.

Bedroom 1

13' 4" x 10' 8" (4.06m x 3.25m)

Double glazed window. Electric radiator. Fitted wardrobes.

Bedroom 2

10' 8" x 9' 9" (3.25m x 2.97m)

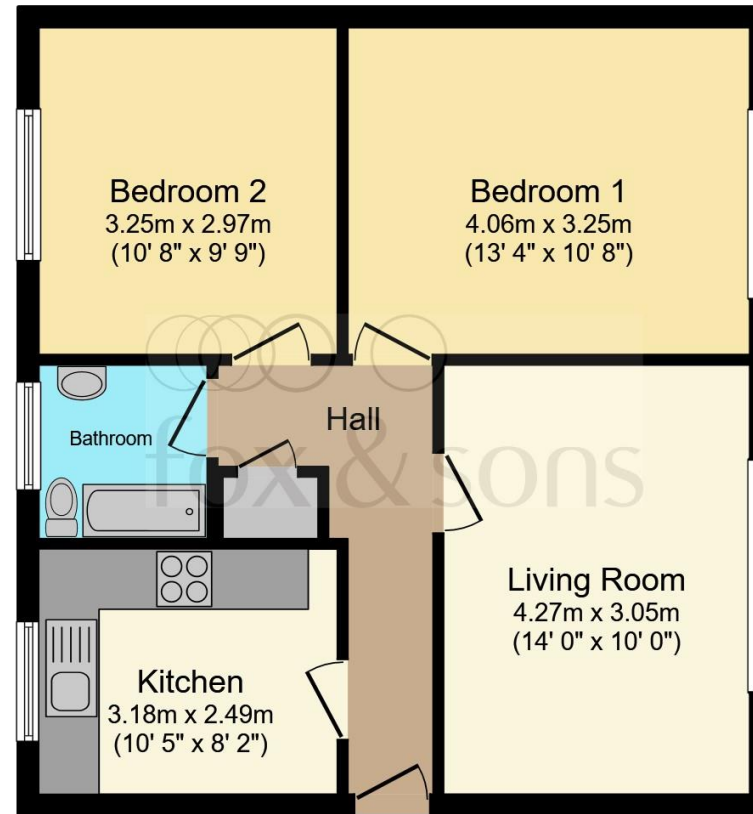
Double glazed window. Radiator. Fitted wardrobes.

Bathroom

Comprising a bath with mixer taps and over head shower attachment. Low level W.C. Wash hand basin. Heated towel rail. Tiled throughout. Double glazed window.

Garage

Up and over door.



Total floor area 53.9 sq.m. (580 sq.ft.) approx

This floor plan is for illustrative purposes only. It is not drawn to scale. Any measurements, floor areas (including any total floor area), openings and orientation are approximate. No details are guaranteed, they cannot be relied upon for any purpose and they do not form part of any agreement. No liability is taken for any error, omission or misstatement. A party must rely upon its own inspection(s). Powered by www.focalagent.com



view this property online fox-and-sons.co.uk/Property/EBN119619



welcome to

Belle Vue Court Belle Vue Road, Eastbourne

- PURPOSE BUILT FLAT
- TWO DOUBLE BEDROOMS
- WELL PRESENTED AND SPACIOUS ACCOMMODATION
- KITCHEN/BREAKFAST ROOM
- LIVING ROOM

Tenure: Leasehold EPC Rating: F

This is a Leasehold property with details as follows; Term of Lease 189 years from 29 Sep 1968. Should you require further information please contact the branch. Please Note additional fees could be incurred for items such as Leasehold packs.

guide price

£190,000 - £205,000



Please note the marker reflects the postcode not the actual property

view this property online fox-and-sons.co.uk/Property/EBN119619



Property Ref:
EBN119619 - 0007

1. MONEY LAUNDERING REGULATIONS Intending purchasers will be asked to produce identification documentation at a later stage and we would ask for your co-operation in order that there is no delay in agreeing the sale. 2. These particulars do not constitute part or all of an offer or contract. 3. The measurements indicated are supplied for guidance only and as such must be considered incorrect. Potential buyers are advised to recheck measurements before committing to any expense. 4. We have not tested any apparatus, equipment, fixtures or services and it is in the buyers interest to check the working condition of any appliances. 5. Where an EPC, or a Home Report (Scotland only) is held for this property, it is available for inspection at the branch by appointment. If you require a printed version of a Home Report, you will need to pay a reasonable production charge reflecting printing and other costs. 6. We are not able to offer an opinion either written or verbal on the content of these reports and this must be obtained from your legal representative. 7. Whilst we take care in preparing these reports, a buyer should ensure that his/her legal representative confirms as soon as possible all matters relating to title including the extent and boundaries of the property and other important matters before exchange of contracts.

Fox & Sons is a trading name of Sequence (UK) Limited which is registered in England and Wales under company number 4268443, Registered Office is Cumbria House, 16-20 Hockliffe Street, Leighton Buzzard, Bedfordshire, LU7 1GN. VAT Registration Number is 500 2481 05.


fox & sons



01323 410911



Eastbourne@fox-and-sons.co.uk



19 Cornfield Road, EASTBOURNE, East Sussex,
BN21 4QD



fox-and-sons.co.uk