



**Carew Views Carew Road, Eastbourne BN21 2JL**



**welcome to**

**Carew Views Carew Road, Eastbourne**

Boasting spectacular far reaching views across Eastbourne, this well appointed two bedroom apartment with garage and SHARE OF FREEHOLD located within the sought after Upperton area.



## Communal Entrance Porch

### Entrance Hall

Entry phone system. Electric radiator. Airing cupboard. Cupboard housing power.

### Lounge

17' 9" max x 17' 5" max ( 5.41m max x 5.31m max )  
Double glazed patio door leading to balcony. Two electric radiators. Double glazed window to the side aspect. Beautiful views over Eastbourne.

### Kitchen

8' 3" x 6' 11" ( 2.51m x 2.11m )  
A range of wall and base units with work top over incorporating a stainless steel sink and drainer unit. Electric oven and hob with cooker hood above. Space and plumbing for washing machine and dishwasher. Views across Eastbourne. Double glazed window to the rear aspect.

### Bedroom 1

11' 8" x 10' 3" max ( 3.56m x 3.12m max )  
Double glazed window to the front aspect. Fitted wardrobes. Electric radiator. Fitted desk.

### Bedroom 2

11' 8" x 6' 10" ( 3.56m x 2.08m )  
Double glazed window to the front aspect. Fitted wardrobe. Electric radiator.

### Bathroom

Comprising a bath with mixer taps and over head shower attachment. Wash hand basin. Heated towel rail. Extractor fan. Double glazed window to the side aspect.

### Cloakroom

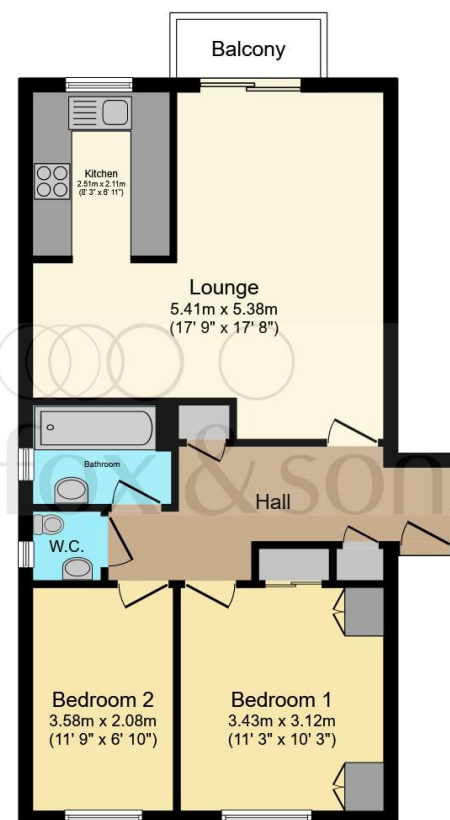
Double glazed window to the side aspect. Low level W.C. Wash hand basin.

### Private Balcony

Beautiful panoramic views across Eastbourne.

## Garage

Up and over door. Lighting.



Total floor area 62.8 m<sup>2</sup> (676 sq.ft.) approx

This floor plan is for illustrative purposes only. It is not drawn to scale. Any measurements, floor areas (including any total floor area), openings and orientation are approximate. No details are guaranteed, they cannot be relied upon for any purpose and they do not form part of any agreement. No liability is taken for any error, omission or misstatement. A party must rely upon its own inspection(s). Powered by [www.focalagent.com](http://www.focalagent.com)



**view this property online** [fox-and-sons.co.uk/Property/EBN118666](http://fox-and-sons.co.uk/Property/EBN118666)



welcome to

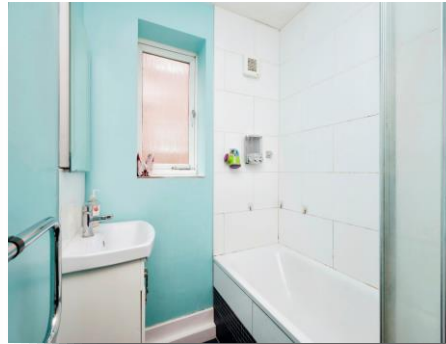
## Carew Views Carew Road, Eastbourne

- TWO BEDROOM APARTMENT
- FAR REACHING VIEWS OF EASTBOURNE
- GARAGE
- UPPERTON LOCATION
- BALCONY

Tenure: Leasehold EPC Rating: C

This is a Leasehold property. We are awaiting further details about the Term of the lease. For further information please contact the branch. Please note additional fees could be incurred for items such as Leasehold packs.

**£190,000**



Please note the marker reflects the postcode not the actual property

**view this property online** [fox-and-sons.co.uk/Property/EBN118666](https://fox-and-sons.co.uk/Property/EBN118666)



Property Ref:  
EBN118666 - 0008

1. MONEY LAUNDERING REGULATIONS Intending purchasers will be asked to produce identification documentation at a later stage and we would ask for your co-operation in order that there is no delay in agreeing the sale. 2. These particulars do not constitute part or all of an offer or contract. 3. The measurements indicated are supplied for guidance only and as such must be considered incorrect. Potential buyers are advised to recheck measurements before committing to any expense. 4. We have not tested any apparatus, equipment, fixtures or services and it is in the buyers interest to check the working condition of any appliances. 5. Where an EPC, or a Home Report (Scotland only) is held for this property, it is available for inspection at the branch by appointment. If you require a printed version of a Home Report, you will need to pay a reasonable production charge reflecting printing and other costs. 6. We are not able to offer an opinion either written or verbal on the content of these reports and this must be obtained from your legal representative. 7. Whilst we take care in preparing these reports, a buyer should ensure that his/her legal representative confirms as soon as possible all matters relating to title including the extent and boundaries of the property and other important matters before exchange of contracts.

Fox & Sons is a trading name of Sequence (UK) Limited which is registered in England and Wales under company number 4268443, Registered Office is Cumbria House, 16-20 Hockliffe Street, Leighton Buzzard, Bedfordshire, LU7 1GN. VAT Registration Number is 500 2481 05.

  
fox & sons



**01323 410911**



[Eastbourne@fox-and-sons.co.uk](mailto:Eastbourne@fox-and-sons.co.uk)



19 Cornfield Road, EASTBOURNE, East Sussex,  
BN21 4QD



**[fox-and-sons.co.uk](https://fox-and-sons.co.uk)**