



**Chiswick Place, Eastbourne BN21 4NH**

**welcome to**

**Chiswick Place, Eastbourne**

Fox and sons are delighted to present this two bedroom split level flat to the market. The property itself briefly comprises of; open-plan lounge/kitchen, two bedrooms, generous bathroom with jacuzzi bath and occupies two floors. To arrange a viewing, call Fox & Sons today!



## Communal Entrance

### Entrance Hall

Entry phone system. Stairs leading to landing.

### Lounge / Kitchen

24' 4" max x 11' 7" max ( 7.42m max x 3.53m max )

### Lounge

Window to the rear aspect. Under stairs cupboard.

Radiator.

### Kitchen

A range of wall and base units with work top over incorporating a stainless steel sink and drainer unit. Electric oven and hob with cooker hood above. Integral fridge / freezer and slim line dishwasher. Space and plumbing for washing machine.

### Bedroom 1

18' 5" max x 20' 1" max ( 5.61m max x 6.12m max )

Window to the side aspect. Radiator. Velux window to the front aspect. Restricted head height.

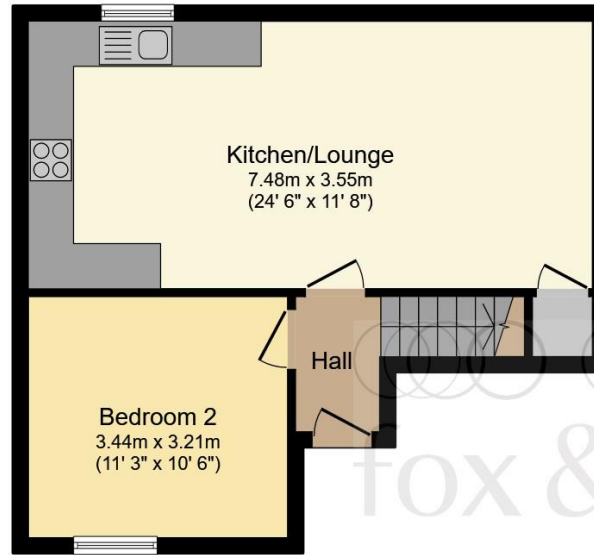
### Bedroom 2

10' 6" x 11' 6" into recess ( 3.20m x 3.51m into recess )

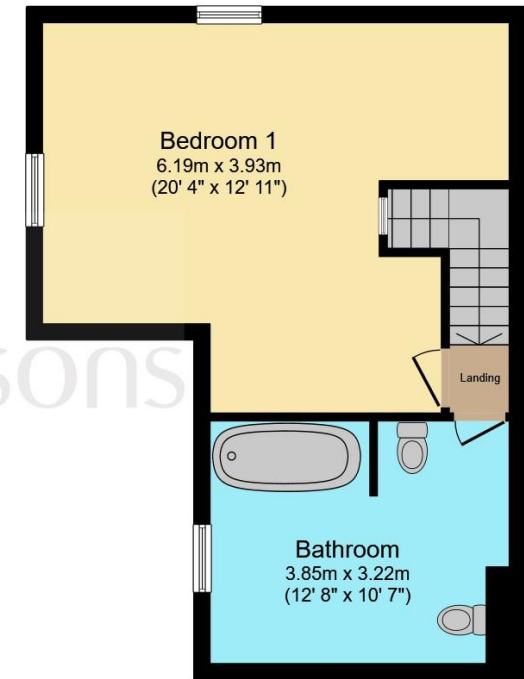
Window to the front aspect. Radiator.

### Bathroom

Comprising a jacuzzi bath with mixer taps and over head shower attachment. Low level W.C. Wash hand basin. Heated towel rail. Extractor fan. Velux window to the side aspect.



**Ground Floor**



**First Floor**

Total floor area 85.4 m<sup>2</sup> (919 sq.ft.) approx

This floor plan is for illustrative purposes only. It is not drawn to scale. Any measurements, floor areas (including any total floor area), openings and orientation are approximate. No details are guaranteed, they cannot be relied upon for any purpose and they do not form part of any agreement. No liability is taken for any error, omission or misstatement. A party must rely upon its own inspection(s). Powered by [www.focalagent.com](http://www.focalagent.com)



**view this property online** [fox-and-sons.co.uk/Property/EBN118453](http://fox-and-sons.co.uk/Property/EBN118453)



welcome to

## Chiswick Place, Eastbourne

- SPLIT LEVEL FLAT
- TWO BEDROOMS
- TOWN CENTRE LOCATION
- WELL PRESENTED THROUGHOUT
- GENEROUS BATHROOM

Tenure: Leasehold EPC Rating: C

This is a Leasehold property with details as follows; Term of Lease 999 years from 25 Dec 2005. Should you require further information please contact the branch. Please Note additional fees could be incurred for items such as Leasehold packs.

offers over

**£300,000**



**view this property online** [fox-and-sons.co.uk/Property/EBN118453](https://fox-and-sons.co.uk/Property/EBN118453)



Property Ref:  
EBN118453 - 0004

1. MONEY LAUNDERING REGULATIONS Intending purchasers will be asked to produce identification documentation at a later stage and we would ask for your co-operation in order that there is no delay in agreeing the sale. 2. These particulars do not constitute part or all of an offer or contract. 3. The measurements indicated are supplied for guidance only and as such must be considered incorrect. Potential buyers are advised to recheck measurements before committing to any expense. 4. We have not tested any apparatus, equipment, fixtures or services and it is in the buyers interest to check the working condition of any appliances. 5. Where an EPC, or a Home Report (Scotland only) is held for this property, it is available for inspection at the branch by appointment. If you require a printed version of a Home Report, you will need to pay a reasonable production charge reflecting printing and other costs. 6. We are not able to offer an opinion either written or verbal on the content of these reports and this must be obtained from your legal representative. 7. Whilst we take care in preparing these reports, a buyer should ensure that his/her legal representative confirms as soon as possible all matters relating to title including the extent and boundaries of the property and other important matters before exchange of contracts.

Fox & Sons is a trading name of Sequence (UK) Limited which is registered in England and Wales under company number 4268443, Registered Office is Cumbria House, 16-20 Hockliffe Street, Leighton Buzzard, Bedfordshire, LU7 1GN. VAT Registration Number is 500 2481 05.



Please note the marker reflects the  
postcode not the actual property



**01323 410911**



[Eastbourne@fox-and-sons.co.uk](mailto:Eastbourne@fox-and-sons.co.uk)



19 Cornfield Road, EASTBOURNE, East Sussex,  
BN21 4QD



**[fox-and-sons.co.uk](https://fox-and-sons.co.uk)**