



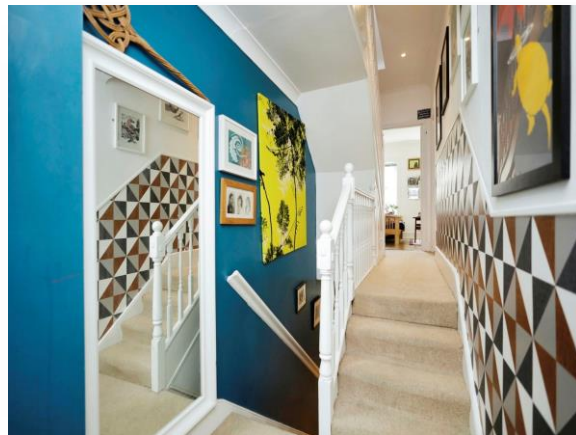
Willingdon Road, Eastbourne BN21 1TJ



welcome to

Willingdon Road, Eastbourne

A well-presented three bedroom terrace house offering light & spacious accommodation with three bedrooms, two reception rooms, en-suite to master, rear garden/parking located on the borders of Upperton & Old Town. Viewing highly recommended!



Entrance Porch

Double glazed window and door to the front aspect.

Entrance Hall

Door to the front aspect.

Lounge

13' 9" into bay x 11' 8" into recess (4.19m into bay x 3.56m into recess)

Double glazed bay window to the front aspect. Gas fire. Radiator.

Dining Room

9' 9" into recess x 11' 4" (2.97m into recess x 3.45m)

Double glazed window to the rear aspect. Radiator. Doors opening to Lounge.

Kitchen

12' 5" x 8' 1" (3.78m x 2.46m)

A range of wall and base units with work top over incorporating a stainless steel sink and drainer unit. Electric oven and gas hob with extractor fan above. Space and plumbing for washing machine and dish washer. Upright radiator. Door to the side aspect. Double glazed window to the side and rear aspect.

Cloakroom

Comprising of a low level W.C. Wash hand basin. Double glazed window to the side aspect.

First Floor Landing

Stairs leading from ground floor to first floor landing.

Bedroom 1

18' 6" max x 8' 1" max (5.64m max x 2.46m max)

Double glazed window to the rear aspect. Built in wardrobes. Velux to the front aspect. Radiator. Restricted head height.

En Suite

Comprising a shower cubicle with over head shower attachment. Velux to the front aspect. Low level W.C. Wash hand basin. Heated towel rail.

Bedroom 2

15' 2" into recess x 14' into bay (4.62m into recess x 4.27m into bay)

Double glazed bay window to the front aspect. Radiator.

Bedroom 3

11' 4" x 9' 10" into recess (3.45m x 3.00m into recess)

Double glazed window to the rear aspect. Radiator.

Bathroom

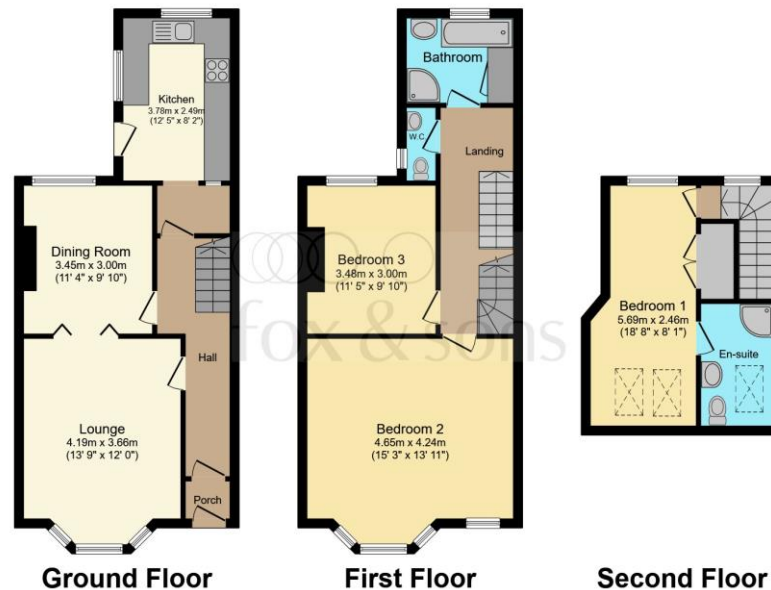
Comprising a bath with mixer taps and over head shower attachment. Shower cubicle with over head shower attachment. Airing cupboard. Wash hand basin. Heated towel rail. Double glazed window to the rear aspect.

Rear Garden

Low maintenance rear garden with seating area and gates opening to provide off road parking.

Off Road Parking

Off road parking to the rear of the property.



Total floor area 118.4 m² (1,274 sq.ft.) approx

This floorplan is for illustrative purposes only and is not drawn to scale. Measurements, floor-areas, openings and orientations are approximate. They should not be relied upon for any purpose and do not form any part of an agreement. No liability is taken for any error or mis-statement. All parties must rely on their own inspections.



view this property online fox-and-sons.co.uk/Property/EBN118371



welcome to

Willingdon Road, Eastbourne

- BAY FRONTED TERRACE HOUSE
- THREE BEDROOMS
- EN-SUITE TO MASTER
- TWO RECEPTION ROOMS
- WELL-PRESENTED THROUGHOUT

Tenure: Freehold EPC Rating: D

guide price

£360,000 - £370,000



Please note the marker reflects the postcode not the actual property

view this property online fox-and-sons.co.uk/Property/EBN118371



Property Ref:
EBN118371 - 0007

1. MONEY LAUNDERING REGULATIONS Intending purchasers will be asked to produce identification documentation at a later stage and we would ask for your co-operation in order that there is no delay in agreeing the sale. 2. These particulars do not constitute part or all of an offer or contract. 3. The measurements indicated are supplied for guidance only and as such must be considered incorrect. Potential buyers are advised to recheck measurements before committing to any expense. 4. We have not tested any apparatus, equipment, fixtures or services and it is in the buyers interest to check the working condition of any appliances. 5. Where an EPC, or a Home Report (Scotland only) is held for this property, it is available for inspection at the branch by appointment. If you require a printed version of a Home Report, you will need to pay a reasonable production charge reflecting printing and other costs. 6. We are not able to offer an opinion either written or verbal on the content of these reports and this must be obtained from your legal representative. 7. Whilst we take care in preparing these reports, a buyer should ensure that his/her legal representative confirms as soon as possible all matters relating to title including the extent and boundaries of the property and other important matters before exchange of contracts.

Fox & Sons is a trading name of Sequence (UK) Limited which is registered in England and Wales under company number 4268443, Registered Office is Cumbria House, 16-20 Hockliffe Street, Leighton Buzzard, Bedfordshire, LU7 1GN. VAT Registration Number is 500 2481 05.


fox & sons



01323 410911



Eastbourne@fox-and-sons.co.uk



19 Cornfield Road, EASTBOURNE, East Sussex,
BN21 4QD



fox-and-sons.co.uk