



Lower Ground Floor Flat Lansdowne Place, Hove BN3 1FP

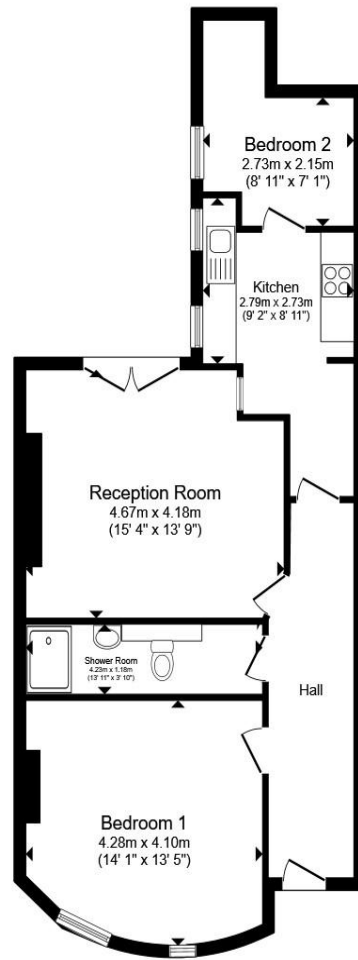
A spacious two bedroom lower ground floor apartment in one of the most sought after locations in central Hove.

welcome to

Lower Ground Floor Flat Lansdowne Place, Hove

A spacious two bedroom lower ground floor apartment in one of the most sought after locations in central Hove. The well presented accommodation comprises of own street entrance, large entrance hallway, spacious living room and separate kitchen, two double bedrooms, bathroom and good size courtyard garden.





Total floor area 68.3 m² (736 sq.ft.) approx

This floor plan is for illustrative purposes only. It is not drawn to scale. Any measurements, floor areas (including any total floor area), openings and orientation are approximate. No details are guaranteed, they cannot be relied upon for any purpose and they do not form part of any agreement. No liability is taken for any error, omission or misstatement. A party must rely upon its own inspection(s). Powered by www.propertybox.io



Lansdowne Place is an attractive Road of Regency townhouses running to the North and South of Western Road and down to the seafront and Hove lawns. There is a wide range of independent shops, bars, cafes and restaurants literally on the doorstep, along with conveniently placed Sainsbuys local and Tesco express supermarkets and a large waitrose, within easy reach. Hove lawns and seafront is at the end of the road, giving miles of recreational promenade and seafront.

welcome to

Lower Ground Floor Flat Lansdowne Place, Hove

- Two bedroom apartment
- Central Hove location
- Share of Freehold
- Separate kitchen
- West facing courtyard garden
- Grade II listed building
- Private entrance

Tenure: Leasehold EPC Rating: C Council Tax Band: C

This is a Leasehold property. We are awaiting further details about the Term of the lease. For further information please contact the branch. Please note additional fees could be incurred for items such as Leasehold packs.

£400,000



Please note the marker reflects the postcode not the actual property

check out more properties at fox-and-sons.co.uk



Property Ref:
BHF114352 - 0002

1. MONEY LAUNDERING REGULATIONS Intending purchasers will be asked to produce identification documentation at a later stage and we would ask for your co-operation in order that there is no delay in agreeing the sale. 2. These particulars do not constitute part or all of an offer or contract. 3. The measurements indicated are supplied for guidance only and as such must be considered incorrect. Potential buyers are advised to recheck measurements before committing to any expense. 4. We have not tested any apparatus, equipment, fixtures or services and it is in the buyers interest to check the working condition of any appliances. 5. Where an EPC, or a Home Report (Scotland only) is held for this property, it is available for inspection at the branch by appointment. If you require a printed version of a Home Report, you will need to pay a reasonable production charge reflecting printing and other costs. 6. We are not able to offer an opinion either written or verbal on the content of these reports and this must be obtained from your legal representative. 7. Whilst we take care in preparing these reports, a buyer should ensure that his/her legal representative confirms as soon as possible all matters relating to title including the extent and boundaries of the property and other important matters before exchange of contracts.

Fox & Sons is a trading name of Sequence (UK) Limited which is registered in England and Wales under company number 4268443, Registered Office is Cumbria House, 16-20 Hockliffe Street, Leighton Buzzard, Bedfordshire, LU7 1GN. VAT Registration Number is 500 2481 05.



01273 777000



westernrd@fox-and-sons.co.uk



117-118 Western Road, BRIGHTON, East
Sussex, BN1 2AD



fox-and-sons.co.uk