



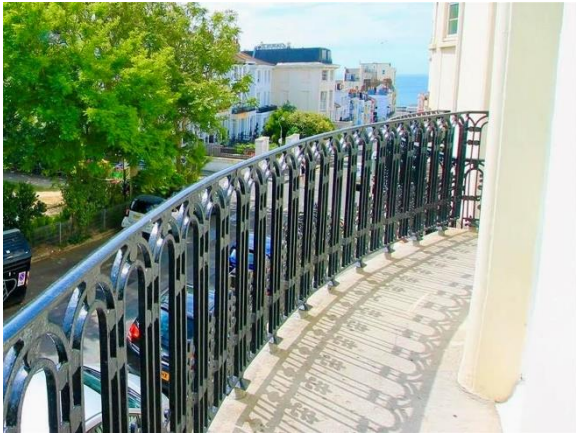
Norfolk Square, Brighton BN1 2PB

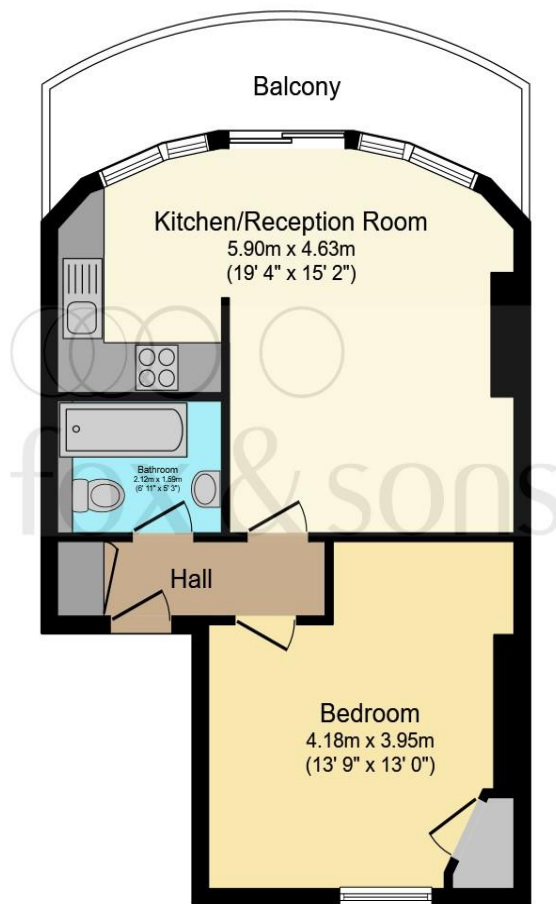
A beautiful first floor apartment with high ceilings, floor to ceiling windows with original shutters, modern kitchen and bathroom, large double bedroom and a useable balcony with gorgeous side sea views.

welcome to

Norfolk Square, Brighton

A charming, spacious and light first floor balcony apartment, overlooking picturesque Norfolk Square and with gorgeous side views of the sea. The flat is situated in a row of traditional Regency buildings just off Western Road and moments from the fabulous seafront promenade. The accommodation comprises of a large reception room of original proportions, with high ceilings, three floor to ceiling windows, original shutters and feature fireplace. There is a well appointed modern open plan kitchen, bathroom and large double bedroom.





Total floor area 44.8 m² (482 sq.ft.) approx

This floor plan is for illustrative purposes only. It is not drawn to scale. Any measurements, floor areas (including any total floor area), openings and orientation are approximate. No details are guaranteed, they cannot be relied upon for any purpose and they do not form part of any agreement. No liability is taken for any error, omission or misstatement. A party must rely upon its own inspection(s). Powered by www.focalagent.com

Norfolk Square is located on the border of Brighton and Hove it has easy access to both environs of this exciting area. Waitrose is just along the road as are numerous cafes, pubs and boutique shops. Mainline Brighton railway is around 15 minutes walk.

welcome to

Norfolk Square, Brighton

- Spacious first floor apartment
- High ceilings and floor to ceiling windows
- Balcony
- Modern kitchen
- Bathroom
- Large double bedroom
- No onward chain
- Share of freehold

Tenure: Leasehold EPC Rating: Exempt

This is a Leasehold property. We are awaiting further details about the Term of the lease. For further information please contact the branch. Please note additional fees could be incurred for items such as Leasehold packs.

£325,000



Please note the marker reflects the postcode not the actual property

check out more properties at fox-and-sons.co.uk



Property Ref:
BHF113935 - 0009

1. MONEY LAUNDERING REGULATIONS Intending purchasers will be asked to produce identification documentation at a later stage and we would ask for your co-operation in order that there is no delay in agreeing the sale. 2. These particulars do not constitute part or all of an offer or contract. 3. The measurements indicated are supplied for guidance only and as such must be considered incorrect. Potential buyers are advised to recheck measurements before committing to any expense. 4. We have not tested any apparatus, equipment, fixtures or services and it is in the buyers interest to check the working condition of any appliances. 5. Where an EPC, or a Home Report (Scotland only) is held for this property, it is available for inspection at the branch by appointment. If you require a printed version of a Home Report, you will need to pay a reasonable production charge reflecting printing and other costs. 6. We are not able to offer an opinion either written or verbal on the content of these reports and this must be obtained from your legal representative. 7. Whilst we take care in preparing these reports, a buyer should ensure that his/her legal representative confirms as soon as possible all matters relating to title including the extent and boundaries of the property and other important matters before exchange of contracts.

Fox & Sons is a trading name of Sequence (UK) Limited which is registered in England and Wales under company number 4268443, Registered Office is Cumbria House, 16-20 Hockliffe Street, Leighton Buzzard, Bedfordshire, LU7 1GN. VAT Registration Number is 500 2481 05.



01273 777000



westernrd@fox-and-sons.co.uk



117-118 Western Road, BRIGHTON, East
Sussex, BN1 2AD



fox-and-sons.co.uk