



Cavalier Road, Thame - OX9 3TP

Offers Over £350,000

 **TIM RUSS**  
& Company



## Cavalier Road

Thame, Oxfordshire

- BRIGHT & AIRY THREE BEDROOM FAMILY HOME
- IDEAL FIRST TIME/INVESTMENT PURCHASE
- POSITIONED AT THE END OF THE STREET IN A QUIET POSITION
- OPEN PLAN KITCHEN/DINING AREA
- BRIGHT SITTING ROOM
- GARAGE WITH PARKING
- COUNCIL TAX BAND - C



# Cavalier Road

Thame, Oxfordshire

Situated at the end of a quiet road and positioned ideally for the picturesque High Street and Barley Hill Primary School, is this bright and airy three bedroom family home. Offering bright and spacious accommodation with a good garden and garage, this certainly makes an ideal first time/investment purchase. The accommodation features the entrance hall that leads to the sitting room with a lovely big window that floods the space entirely in natural light. From here, enter the open plan kitchen/dining area. The kitchen is fitted with an excellent range of floor and wall mounted units with many integrated appliances including a dishwasher, fridge-freezer and microwave. Doors from the dining space lead out to the rear garden.

To the first floor, there are three bedrooms and a family bathroom.

## Outside

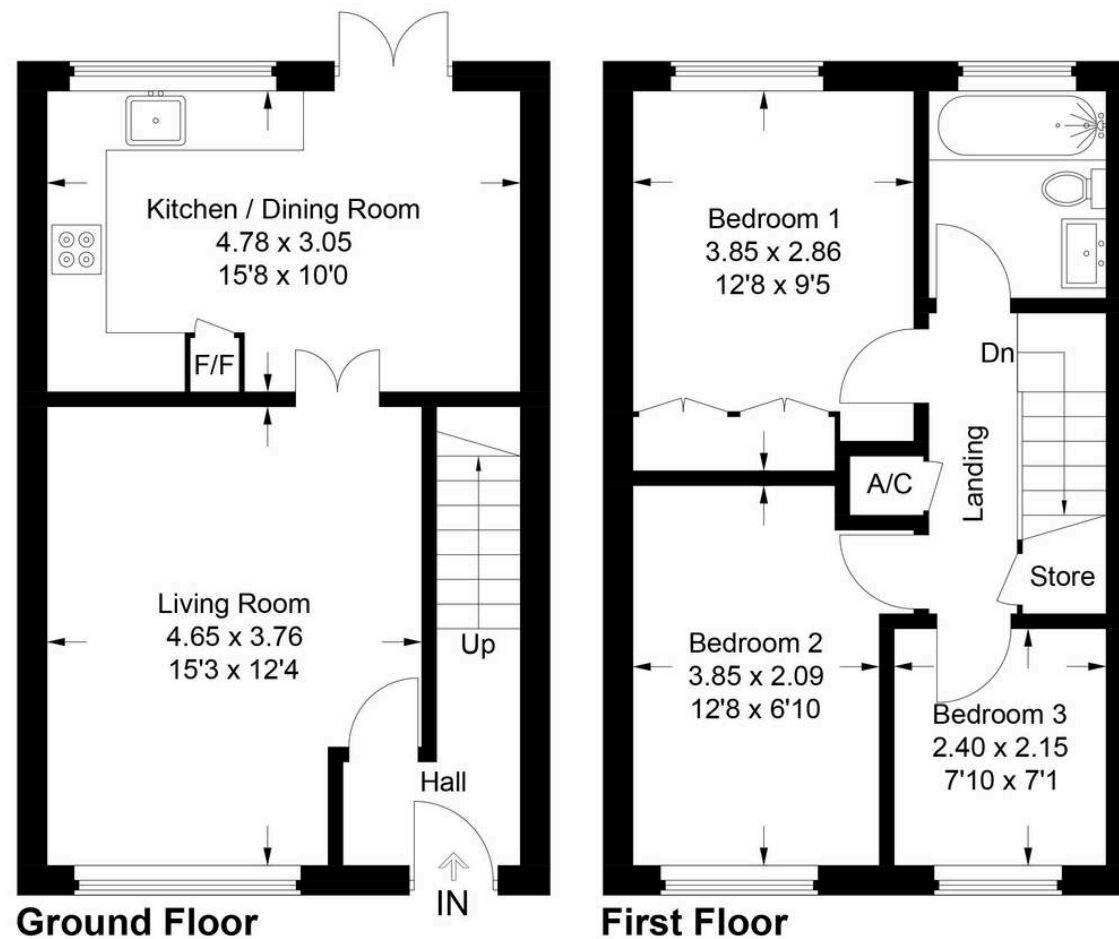
To the front, the area is mainly laid to lawn with a path leading to the front door, whilst to the rear the garden is of a good size complete with a garden gate leading to the side access.

Council Tax band: C

Tenure: Freehold

EPC Energy Efficiency Rating: D





## 29 Cavalier Road, Thame, OX9 3TP

Approximate Gross Internal Area  
 Ground Floor = 38.0 sq m / 409 sq ft  
 First Floor = 37.7 sq m / 406 sq ft  
 Total = 75.7 sq m / 815 sq ft

This plan is for layout guidance only. Not drawn to scale unless stated. Windows and door openings are approximate. Whilst every care is taken in the preparation of this plan, please check all dimensions, shapes and compass bearings before making any decisions reliant upon them.  
 © CJ Property Marketing Ltd Produced for Tim Russ & Company

# Tim Russ and Company

Tim Russ & Co, 112 High Street - OX9 3DZ

01844 217722 • thame@timruss.co.uk • timruss.co.uk/

