



20 Windmill Place, Corbetts Way – OX9 2FL
Thame

Offers in Region of **£189,950**

TIM RUSS
& Company



20 Windmill Place

Corbetts Way, Thame

Council Tax band: C

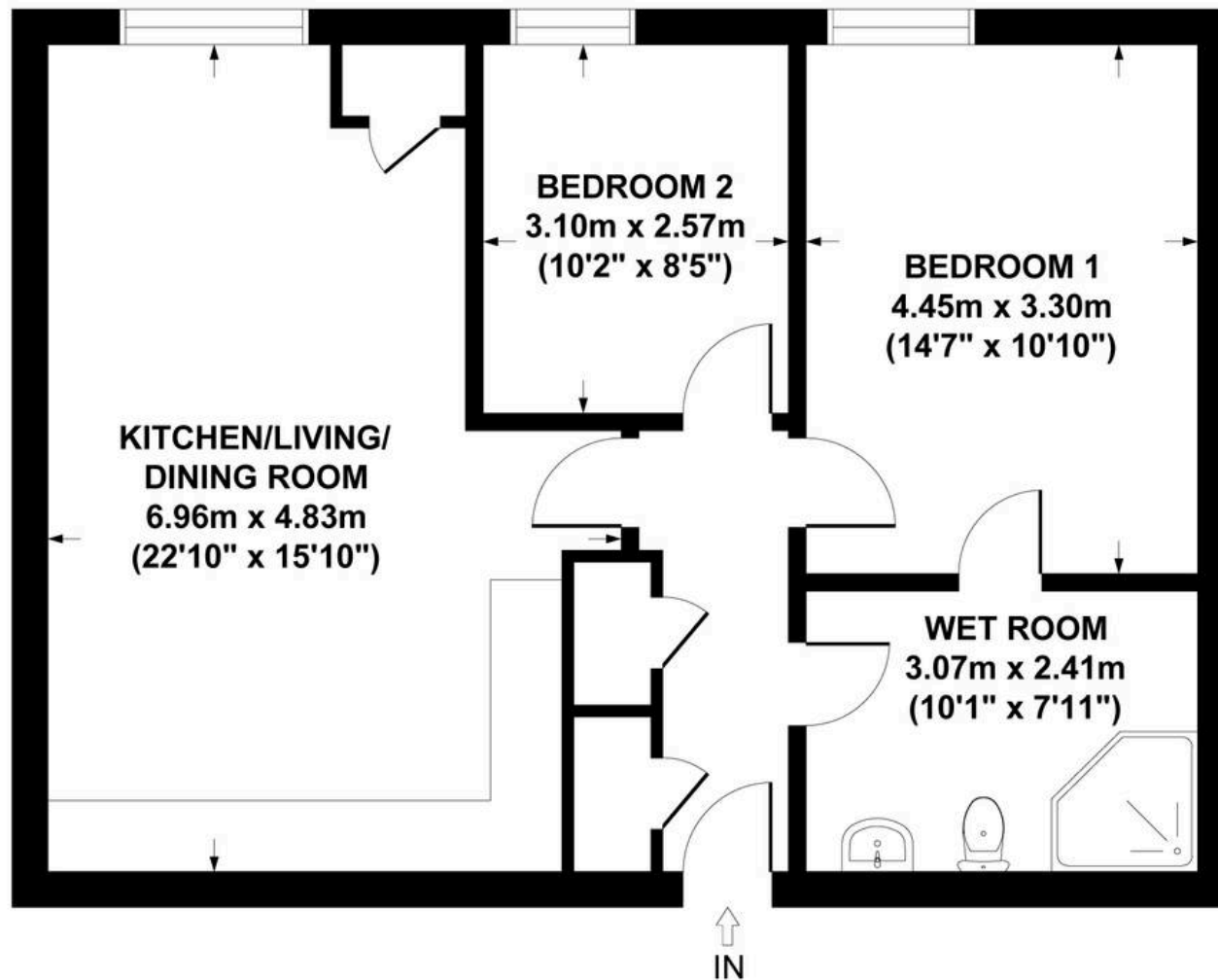
Tenure: Leasehold

EPC Energy Efficiency Rating: B

EPC Environmental Impact Rating: B

- 2 BEDROOM "EXTRA CARE" SHELTERED ACCOMMODATION APARTMENT
- LIFT ACCESS TO ALL FLOORS
- WIDE RANGE OF COMMUNAL FACILITIES
- GUEST SUITE
- COMFORTABLE COMMUNAL LOUNGE & CONSERVATORY
- SOUTH FACING VIEWS OVER THE GARDENS & PHOENIX TRAIL
- LARGE, ACCESSIBLE "JACK & JILL" BATHROOM SUITE
- LANDSCAPED COMMUNAL GARDENS & ROOF TERRACES
- SPACIOUS OPEN PLAN SITTING ROOM
- DEDICATED SITE MANAGER





GROSS INTERNAL
FLOOR AREA 68 SQ M / 727 SQ FT

CORBETTS WAY, THAME , OXFORDSHIRE, OX9 2FL
APPROX. GROSS INTERNAL FLOOR AREA 68 SQ M / 727 SQ FT

FLOOR PLAN IDENTIFICATION PURPOSES ONLY -NOT TO SCALE



Tim Russ and Company

Tim Russ & Co, 112 High Street – OX9 3DZ

01844 217722 • thame@timruss.co.uk •

