



Marden House

Hedley, Stocksfield, NE43 7SW

youngsRPS 

Marden House

Hedley

Stocksfield

NE43 7SW

Offered for sale with no forward chain Marden House is a beautifully presented three bedroom detached house set in a lovely quiet position within the desirable Village of Hedley on the Hill.

- Detached house
- Three bedrooms
- Modern bathroom
- Two reception rooms
- Delightful surrounding gardens
- Driveway for several cars
- Garage/workshop
- Energy efficiency rating F



youngsRPS 

01434 608980



DESCRIPTION

Offered for sale with no forward chain Marden House is a beautifully presented three bedroom detached house set in a lovely quiet position within the desirable Village of Hedley on the Hill. The property benefits from larger than average delightful gardens with long driveway sufficient for several cars leading to a large workshop/garage.

The well proportioned accommodation, which has oil fired central heating and double glazing, is presented to a very high standard throughout. The front door opens into a spacious reception hallway with wood flooring and spiral staircase leading to the first floor, there is a ground floor bedroom with fitted wardrobes, recently updated bathroom, snug/study, extremely light and spacious lounge with attractive fireplace housing a multi fuel burning stove, breakfasting kitchen with integrated appliances, dining room which leads to a conservatory opening to a decked patio and garden beyond

To the first floor there are two double bedrooms, both to the rear elevation enjoying superb views, one with a spacious en-suite, the other with fitted wardrobes.

Marden House is approached via a driveway sufficient for several cars leading to a large garage/workshop with large gravel area.

There are gardens to all sides of the property which are mainly laid to lawn with hedging and well stocked borders, a pleasant patio area, summer house and entertaining area.

LOCATION

The Village of Hedley on the Hill has an award-winning local pub, the Feathers Inn, which offers superb food in a relaxing atmosphere. The village is approximately 3 miles from Stocksfield, 8 miles from Hexham, 14.5 miles from Newcastle, 10 miles from Gateshead Metrocentre and Newcastle International Airport is 17 miles away. Northumberland is famed for the beauty of its countryside and provides a wealth of recreational activities along with ancient and modern visitor attractions. Corbridge was an important garrison town in Roman times and lies just south of Hadrian's wall whilst inland sailing and golf are available at Derwent Water (9 miles) and Slaley Hall (6 miles)

DIRECTIONS

From the west - leave Stocksfield via New Ridley Road, turn left signposted Hedley on the Hill. From the east - leave Greenside via Lead Road (B6315) continue for 4 miles to Hedley on the Hill.

SERVICES

Mains electricity, water and sewage. Oil fired central heating supplying radiators and hot water.

CHARGES

Northumberland County Council tax band D

VIEWINGS

Viewing is strictly by appointment. Arrangements can be made by contacting YoungsRPS, Hexham on 01434 608980.

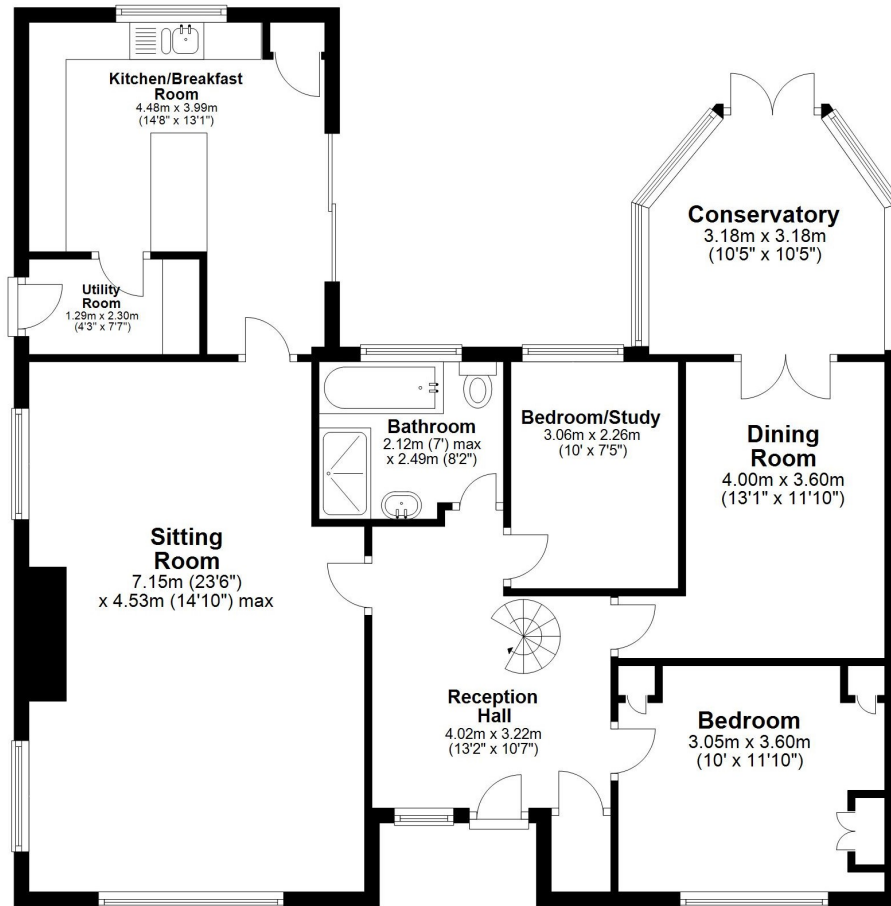
FREE MARKET APPRAISAL

We would be pleased to provide professional, unbiased advice on the current value and marketing of your existing home.



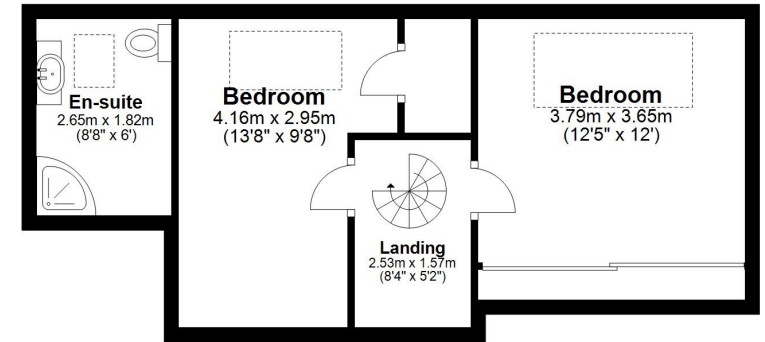
Ground Floor

Approx. 107.4 sq. metres (1155.7 sq. feet)



First Floor

Approx. 35.7 sq. metres (383.9 sq. feet)



Total area: approx. 143.0 sq. metres (1539.6 sq. feet)

Marden House, Hedley, -

IMPORTANT NOTE: Consumer Protection from Unfair Trading Regulations 2008 and the Business Protection from Misleading Marketing Regulations 2008: We endeavour to make our sales particulars accurate and reliable. They should be considered as general guidance only and do not constitute all or any part of the contract. None of the services, fittings and equipment have been tested. Measurements, where given, are approximate and for descriptive purposes only. Boundaries cannot be guaranteed and must be checked by solicitors prior to exchange of contracts. Prospective buyers and their advisers should satisfy themselves as to the facts, and before arranging an inspection, availability. Further information on points of particular importance can be provided. No person in the employment of YoungsRPS (NE) Ltd has any authority to make or give any representation or warranty whatever in relation to this property.



R201

NORTHALLERTON
General: 01609 773004
Land Agency: 01609 781234

northallerton@youngsrps.com

SEDGEFIELD
General: 01740 617377
Land Agency: 01740 622100

sedgefield@youngsrps.com

NEWCASTLE
General: 0191 261 0300

newcastle@youngsrps.com

HEXHAM
General: 01434 608980
Land Agency: 01434 609000

hexham@youngsrps.com

youngsRPS