

CHARLES  
NEWTON & CO

ESTATE AGENTS & SOLICITORS



7 Nuthall Circle  
Kirk Hallam DE7 4GU

£175,000





## 7 Nuthall Circle

Kirk Hallam DE7 4GU

A three bedroom semi-detached family home with off street parking. The property comprises of kitchen and dining room and lounge to the ground floor. On the first floor there are well-proportioned bedrooms and bathroom.

The property is set in a sought after location, Pioneer Meadow Nature Reserve is within easy reach offering scenery & pleasant walks, with Nutbrook Trail not far away.

# SOLD

## CHARLES NEWTON

ESTATE AGENTS & SOLICITORS

# 01773 535535

[www.charlesnewton.co.uk](http://www.charlesnewton.co.uk)







#### Entrance Hall

Upvc door to the front elevation, double glazed side window, stairs to first floor, meter cupboard, radiator & fitted carpet.

#### Lounge

15'1" x 12'1" (4.60m x 3.68m)

Double glazed bay window to the front elevation, fireplace with stone mantelpiece housing gas fire, Tv point, phone point, radiator & fitted carpet.

#### Dining Room

11'9" x 11'4" (3.58m x 3.45m)

Double glazed window to the rear elevation, radiator & laminate flooring.

#### Kitchen

8'2" x 7'6" (2.49m x 2.29m)

Double glazed windows to the rear & side elevation, double glazed door to side elevation, sink unit with stainless steel sink & drainer, free standing cooker, space for fridge/freezer, plumbed for washing machine, under stairs cupboard & wall mounted combi boiler.

#### First Floor

##### First Floor Landing

Double glazed window to the side elevation, loft hatch, doors off to all rooms, airing cupboard & carpet.

##### Bedroom One

12'2" x 10'7" (3.71m x 3.23m)

Double glazed window to the front elevation, fitted wardrobes, storage cupboard, wall lights, radiator & fitted carpet.

##### Bedroom Two

12'1" x 9'7" (3.68m x 2.92m)

Double glazed window to the rear elevation, storage cupboard, radiator & laminate flooring.

##### Bedroom Three

9'6" x 7'7" (2.90m x 2.31m)

Double glazed window to the front elevation, storage cupboard, radiator & fitted carpet.

#### Bathroom

7'3" x 5'5" (2.21m x 1.65m)

Frosted double glazed window to the rear elevation, bath with shower over, low flush WC, pedestal wash hand basin, tiled walls, radiator & vinyl flooring.

#### Outside

##### Front Garden

Front Garden with lawn area, plants & shrubs, driveway with path leading to gated rear garden.

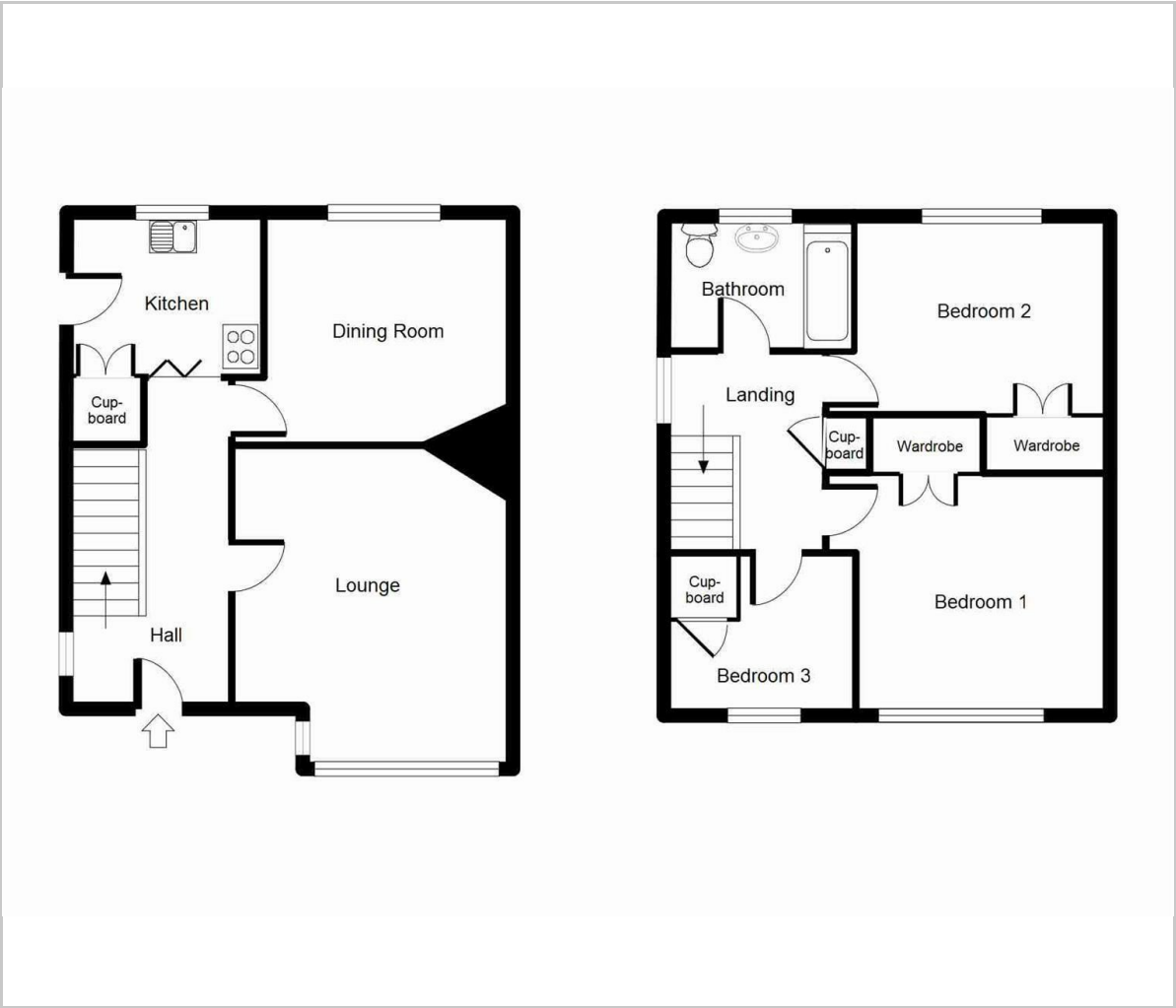
##### Rear Garden

Long rear garden with paved areas, lawned areas, vegetable planters, greenhouse, plants & shrubs, outbuildings & fence boundary.





Floor Plan



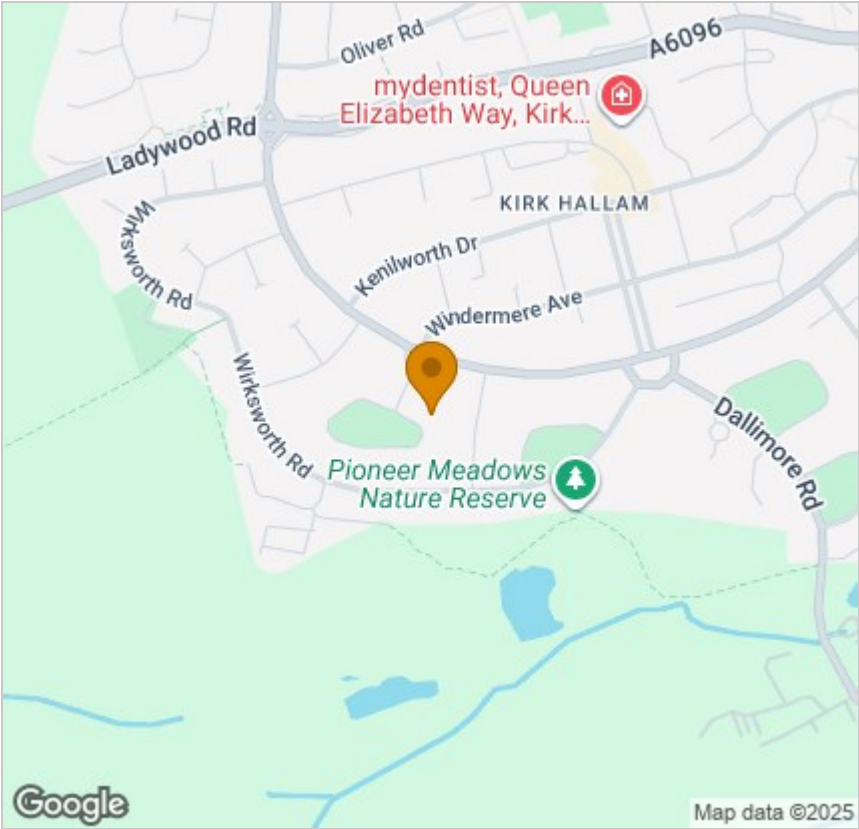
Viewing

Please contact our Eastwood Office on 01773 535535 if you wish to arrange a viewing appointment for this property or require further information.

These particulars, whilst believed to be accurate are set out as a general outline only for guidance and do not constitute any part of an offer or contract. Intending purchasers should not rely on them as statements of representation of fact, but must satisfy themselves by inspection or otherwise as to their accuracy. No person in this firms employment has the authority to make or give any representation or warranty in respect of the property.

2 Alexandra Street, Eastwood, Nottinghamshire, NG16 3BD  
Tel: 01773 535535 Email: [property@charlesnewton.co.uk](mailto:property@charlesnewton.co.uk) [www.charlesnewton.co.uk](http://www.charlesnewton.co.uk)

Area Map



Energy Efficiency Graph

