



Caesar Street, Chester Green,
Derby



£135,000

- Two Large Bedrooms
- Ensuite to Master Bedroom
- Secure Gated Parking
- Open-Plan Living
- Ground Floor Apartment
- City Centre Location
- Standard Construction
- Gas Central Heating
- Leasehold
- EPC rating C



Two fantastic bedrooms, a sought after location and a secure allocated parking space; this superb two-bedroom apartment near Derby's Chester Green is unbeatable!

The home consists of a central entrance hallway, which leads to the glorious open plan living space with kitchen. Benefitting from a generous internal floor area, large glazed windows and charming French doors, the living area is a true delight. The kitchen features well-maintained cabinetry with high-end worktops, an integrated oven with a built-in dishwasher.

Two generously-sized bedrooms stem from the hallway, each capable of housing double or king-size beds, with the master bedroom also containing a luxurious en-suite shower room.

The internal accommodation is completed by the well-equipped bathroom, consisting of a sink, w.c., and a full-length bath with shower above.



Externally, the apartment also benefits from secure allocated parking.

Roman Court is well positioned, providing ready access to Derby City Centre, the Meteor Centre retail park, and the A38.

To view this special property today, please contact the team at Northwood Derby to book your viewing.

Lease Information

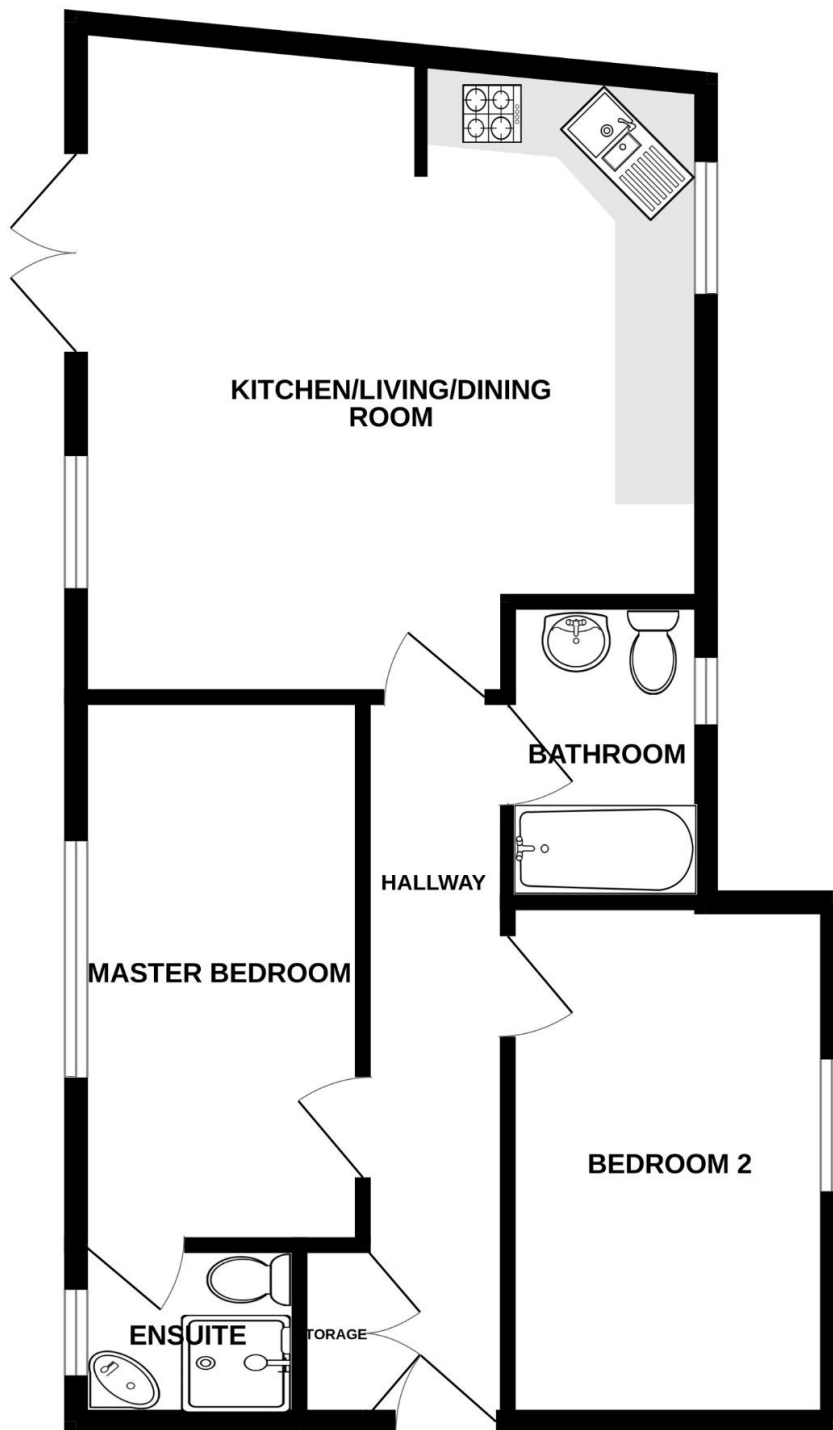
Lease Term - 125 Years
Start Date - 19th Dec 2003
End Date - 19th Dec 2128
Time Remaining - 103 Years

Service Charge - £1245 per annum

Disclaimer

These particulars are issued in good faith but do not constitute representations of fact or form part of any offer or contract. The matters referred to in these particulars should be independently verified by prospective buyers or tenants. Neither Northwood nor any of its employees or agents has any authority to make or give any representation or warranty whatever in relation to this property. We endeavour to make our sales particulars accurate and reliable, however, they do not constitute or form part of an offer or any contract and none is to be relied upon as statements of representation or fact. Any services, systems and appliances listed in this specification have not been tested by us and no guarantee as to their operating ability or efficiency is given. All measurements have been taken as a guide to prospective buyers only, and are not precise. If you require clarification or further information on any points, please contact us, especially if you are travelling some distance

GROUND FLOOR
574 sq.ft. (53.3 sq.m.) approx.



TOTAL FLOOR AREA : 574 sq.ft. (53.3 sq.m.) approx.

Whilst every attempt has been made to ensure the accuracy of the floorplan contained here, measurements of doors, windows, rooms and any other items are approximate and no responsibility is taken for any error, omission or mis-statement. This plan is for illustrative purposes only and should be used as such by any prospective purchaser. The services, systems and appliances shown have not been tested and no guarantee as to their operability or efficiency can be given.
Made with Metropix ©2025



Northwood Derbyshire Limited

01332851570

derby@northwooduk.com