



Whitaker Road, Derby



4



2



2

£485,000

- Four Bedroom Detached House
- Substantial Plot
- En-suite to Master Bedroom
- Original Character Features
- Downstairs WC
- Standard Brick Construction
- Vacant Possession
- No Onward Chain
- Freehold
- EPC rating D
- Council Tax Band F
- Sought After Location



Charming 4-Bedroom Detached Home with Original Character Features on Whitaker Road, Littleover

Situated in a sought-after location, this beautifully presented four-bedroom detached home is full of character and charm. Offering a fantastic opportunity for families seeking space, convenience, and period features. With vacant possession and no onward chain, moving in is hassle-free.

Stepping inside, you are welcomed by a spacious entrance hallway, setting the tone for the generous living spaces throughout. The home retains many original character features, including a stunning stained glass window on the staircase, adding a touch of elegance and history.

The accommodation includes a spacious lounge, perfect for relaxing and entertaining, along



with a modern kitchen and a separate dining room, ideal for family meals and gatherings. A convenient downstairs WC and under-stairs cupboard provide additional practicality.

Upstairs, there are four well-proportioned bedrooms, including a master with an en-suite shower room. The remaining bedrooms are served by a family bathroom, making the layout ideal for a growing household.

Occupying a large plot, the home enjoys ample outdoor space, offering potential for play areas, or even future extensions. Off-road parking is also available.

Located close to Littleover Village, Derby City Centre, and local parks, the property benefits from excellent transport links, local amenities, and access to reputable schools.

This is a rare opportunity to own a character-filled home in a fantastic location.

Externally

This attractive detached period home boasts a traditional red-brick exterior and a distinctive pitched roof, exuding character and kerb appeal. Set back from the road, the property enjoys a private and secluded feel, with a neatly enclosed front garden featuring a mix of mature trees, shrubs, and well-maintained hedging.

A paved driveway provides off-road parking. The front garden is beautifully presented with a combination of gravelled pathways, lawned areas, and mature planting, creating a welcoming first impression.

The house benefits from large multi-paned windows, allowing plenty of natural light to flow into the home. A paved pathway leads around the side of the house towards the rear garden, offering easy access to the outdoor space.

This property's leafy surroundings and well-proportioned plot make it a rare find, blending classic architecture with a peaceful setting perfect for families or those seeking a home with character and charm.



Entrance Hall

This is a spacious and bright entrance hall with a traditional feel, featuring a wooden staircase with blue carpeting leading to the first floor. The hallway offers easy access to all downstairs rooms and provides a sense of connection to the upper level. The walls are painted in a neutral white shade, complemented by dark wood accents on the doors, skirting, and staircase railing, creating a warm and timeless aesthetic.

A stunning stained glass window at the half-landing brings in natural light, adding charm and character to the space. A central chandelier adds an elegant touch, enhancing the welcoming ambiance of the hallway.

Living Room

A generously proportioned living space, perfect for both relaxation and entertaining. The room features large leaded windows that allow plenty of natural light to flood in, creating an inviting atmosphere. The walls are painted in a soft, neutral green tone that enhances the sense of calm and space.

The focal point of the room is a charming fireplace with a dark wood surround, ornate tiled accents, and a gas fire insert, providing both warmth and character.

The room is carpeted in a muted green that complements the wall colour and gives the space a cosy, comfortable feel. A central chandelier adds a sense of elegance and sophistication to the lounge.

WC

This is a stylish and compact WC, featuring a classic monochrome aesthetic. The black-and-white checkered floor tiles add a bold and timeless design element to the space. The walls are painted in crisp white, enhancing the sense of brightness and cleanliness.

The room includes a small but functional wall-mounted sink with chrome fixtures and a tiled backsplash in a coordinating black-and-white pattern. A white toilet with a warm wooden seat is situated at the end of the room beneath a leaded window, which allows natural light to filter in while maintaining privacy.





Kitchen

This is a spacious and functional kitchen with a light, welcoming ambiance. The layout is practical and offers plenty of counter space, ideal for cooking and meal preparation.

The kitchen is fitted with warm wood-effect cabinets paired with neutral countertops for a clean and contemporary look. A tiled backsplash complements the design, making the space easy to maintain. The room is well-lit with natural light streaming in through the leaded windows, which also offer pleasant views of the surrounding garden.

The flooring is laid with neutral tiles that are durable and easy to clean, adding to the practicality of the space. There is a convenient side door providing direct access to the outside of the property, which is perfect for everyday use or entertaining.

Dining Room

This room offers a warm and inviting space that could be utilised as either a formal dining room or an additional lounge. The room is well-lit, featuring large leaded windows and double doors that open directly onto the rear garden, providing seamless indoor-outdoor living and an abundance of natural light.

A focal point of the room is the elegant fireplace, featuring a rich dark wood surround, decorative tiles, and a gas fire insert, adding a touch of charm and sophistication. The soft green walls create a calming atmosphere, complemented by dark wood skirting and trim that highlight the character of the space.

The room is carpeted, providing a cosy feel, and its generous proportions allow for a variety of furniture layouts. The chandelier lighting adds a subtle touch of elegance, making this room an ideal setting for entertaining or relaxing while enjoying views of the garden.

Understairs Cupboard

A convenient space for hanging coats, bags, or household essentials. The area is naturally illuminated by a charming leaded glass window, while a wall-mounted light provides additional brightness. The tiled flooring ensures durability and easy maintenance. With its unique alcove and rustic wooden trim, this space exudes character and could serve as a practical cloakroom, compact utility area, or additional storage for a well-organised home.

Landing

This spacious and well-lit landing provides access to all four bedrooms and the family bathroom on the first floor. The stained-glass window at the staircase adds charm and character, while allowing natural light to brighten the space. The deep blue carpet, paired with dark wood accents on the skirting boards and balustrades, creates a warm and traditional ambiance.

The neutral wall colour enhances the brightness of the area, making it feel open and inviting. With its practical layout and classic design, this landing serves as a central and functional space that connects the upper floor of the home seamlessly.

Master Bedroom

This spacious master bedroom offers a serene retreat with plenty of natural light and a calming atmosphere. The room is carpeted in a deep plum colour, creating a warm and inviting ambiance. The walls are painted in a soft lavender shade, complemented by a decorative strip of plum at the top, giving the room a cohesive and stylish look.

The large windows provide views of the surrounding area and allow sunlight to flood the space during the day. The bedroom also features a classic fireplace that adds charm and character to the room.

The ensuite shower room is conveniently accessed directly from the bedroom, offering privacy and practicality. With its generous size and versatility, this master bedroom provides ample space for a variety of furniture arrangements to suit your needs.

Ensuite Shower Room

This is a well-appointed ensuite shower room, offering both functionality and style. It features a curved glass shower enclosure with chrome fittings, providing a modern and practical solution for daily use. The shower is complemented by a pedestal sink with classic twin taps, adding a touch of traditional elegance to the space.

The room is finished with neutral-toned walls, a contrasting dark patterned floor, and a chrome heated towel rail for added comfort and convenience. A matching toilet with a warm wooden seat completes the suite, while a wall-mounted mirror and glass shelf above the sink provide useful storage and grooming space.

Bedroom Two

This second bedroom is a bright and airy space with a neutral decor that will suit a variety of styles and purposes. The room features a charming decorative fireplace that adds character and serves as a focal point. A sloping ceiling on one side gives the room added charm, while still providing ample usable space.

The room is carpeted in a neutral tone for a cosy and comfortable feel. A large window fitted with curtains allows natural light to flood the room and offers views of the surrounding area. A radiator beneath the window ensures the room remains warm and inviting.

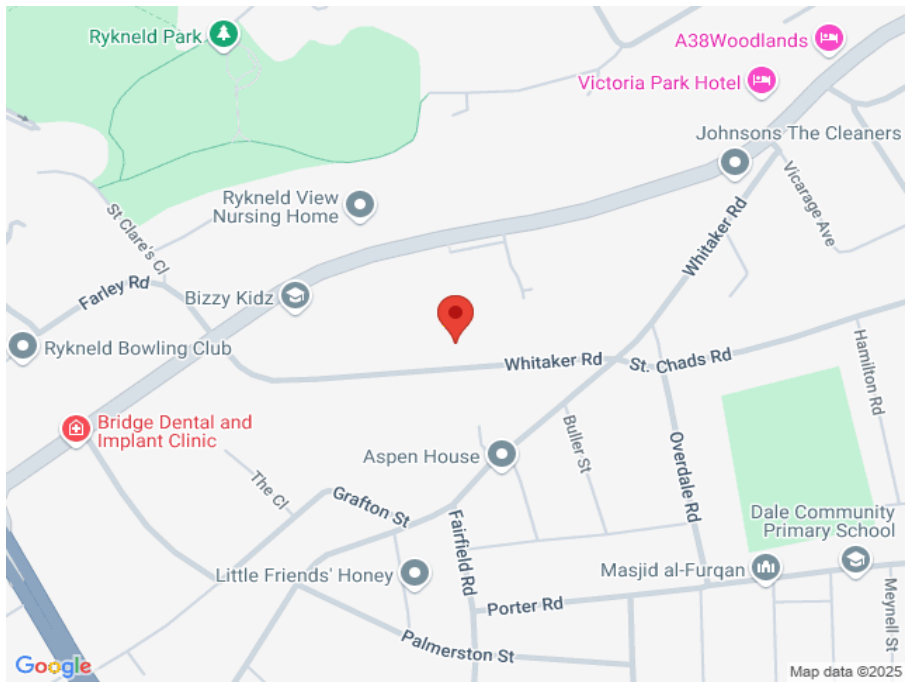
This versatile bedroom is ideal for use as a guest room, child's bedroom, or even a home office, providing flexibility to meet the needs of any buyer.

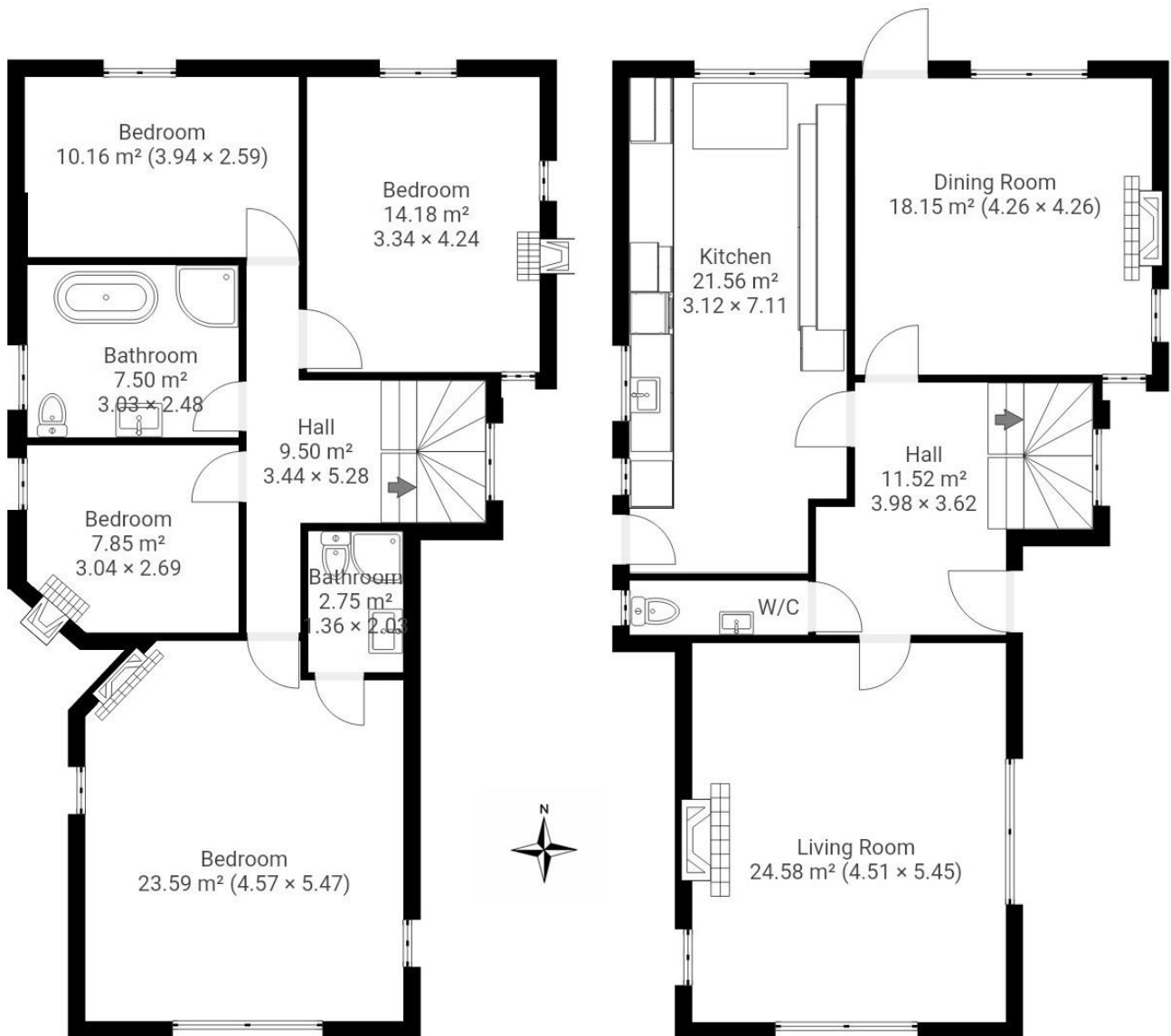
Family Bathroom

This family bathroom is both elegant and spacious, combining classic and modern features to create a luxurious and practical space. The room includes a freestanding claw-foot bathtub, adding timeless charm, and a separate curved glass shower enclosure with chrome fittings for a contemporary touch.

The pedestal sink, with its twin taps, complements the overall classic style, while a high-level cistern toilet provides a vintage-inspired detail. The walls are finished with glossy white subway tiles, accented by black tiles for a striking contrast, which is echoed in the patterned dark tiled flooring.

A chrome heated towel rail adds modern convenience and warmth, and the large window allows natural light to fill the space while being dressed with curtains for privacy. This bathroom is perfect for accommodating the needs of a family while offering a stylish and relaxing environment.





THIS FLOOR PLAN IS PROVIDED WITHOUT WARRANTY OF ANY KIND. SENSOPIA DISCLAIMS ANY WARRANTY INCLUDING, WITHOUT LIMITATION, SATISFACTORY QUALITY OR ACCURACY OF DIMENSIONS.