



Baseball Drive, Derby

£215,000



Key Features

- Three Double Bedrooms
- Terraced Property
- Ensuite to Master Bedroom
- Garage & Parking Space
- Side and Rear Garden
- EPC Rating C
- Freehold
- Council Tax Band B





Northwood are pleased to offer this modern, 3 double bedroom, end town house, the property benefits from a Garage, Off road parking, Gas Central Heating and uPVC double glazing throughout.

In brief the property comprises; -Spacious Entrance Hall, downstairs W/C, open plan lounge/dining area and kitchen.

To the first floor there are two double bedrooms and family bathroom with three-piece suite. The top floor boasts the master bedroom with ensuite shower room.

Entrance Hallway

A spacious hallway with carpet to the floor, stairs leading to the first floor, access into the open plan living kitchen and downstairs W/C.

Downstairs W/C

The downstairs wc benefits from a pedestal sink and low-level W/C. With tiles behind the sink, extraction fan, gas central heating radiator and carpet to the floor.

Open Plan Kitchen / Diner

This stylish and contemporary kitchen is equipped with sleek wood-effect cabinetry, offering ample storage space. The clean lines and neutral colour scheme create a fresh, modern feel, complemented by durable countertops that provide plenty of preparation space. The integrated electric oven and hob, along with the modern extractor hood, ensure a practical cooking environment. The kitchen also benefits from a well-positioned window, allowing natural light to flood the room, making it a bright and welcoming space. Ideal for both everyday family cooking and entertaining, this kitchen combines style with functionality.

Lounge

The open plan living dining benefits from a set of French doors that provide access into the rear garden, side garden & garage. Newly fitted carpet to the floor and gas central heating radiator.



Bedroom Three

A spacious double with uPVC double glazed window overlooking the rear elevation, carpet to the floor and gas central heating radiator.

Bedroom Two

Another large double with uPVC double glazed window overlooking the front elevation and gas central heating radiator.

Bathroom

The family bathroom comprises three-piece suite with low level W/C, pedestal sink and bath with shower over. The storage cupboard in the bathroom also houses the boiler and water tank.

Master Bedroom

A beautifully light room with large uPVC double glazed window overlooking the front elevation. This Master Bedroom certainly doesn't disappoint! Carpet to the floor and gas central heating radiator.

Ensuite

Off the Master bedroom the En Suite offers a low-level W/C, Sink with pedestal and separate shower enclosure. Laminate tile effect flooring and gas central heating radiator.

Rear & Side Garden

A low maintenance rear garden, with artificial grass to both sides, access to front of property via a wooden gate and to the garage / rear parking via a wooden gate.

Garage

The garage is located at the rear of the property and is accessed through an up and over door.





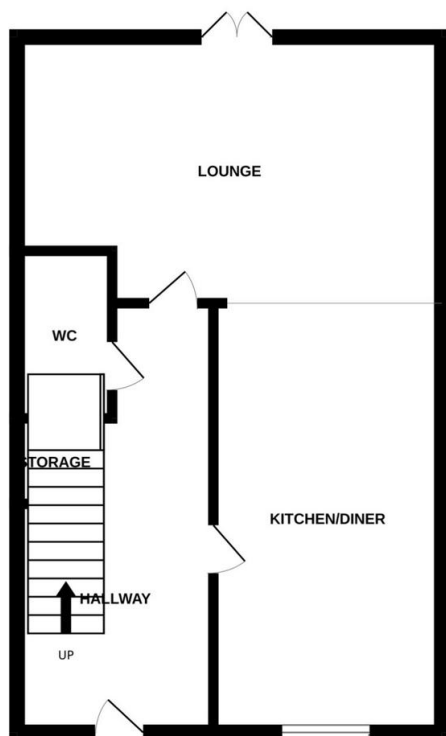
Disclaimer

These particulars are issued in good faith but do not constitute representations of fact or form part of any offer or contract. The matters referred to in these particulars should be independently verified by prospective buyers or tenants. Neither Belvoir nor any of its employees or agents has any authority to make or give any representation or warranty whatever in relation to this property. We endeavour to make our sales particulars accurate and reliable, however, they do not constitute or form part of an offer or any contract and none is to be relied upon as statements of representation or fact. Any services, systems and appliances listed in this specification have not been tested by us and no guarantee as to their operating ability or efficiency is given. All measurements have been taken as a guide to prospective buyers only, and are not precise. If you require clarification or further information on any points, please contact us, especially if you are travelling some distance.

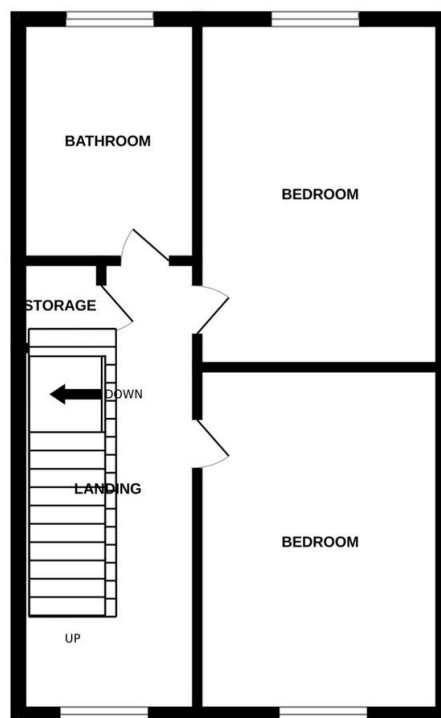




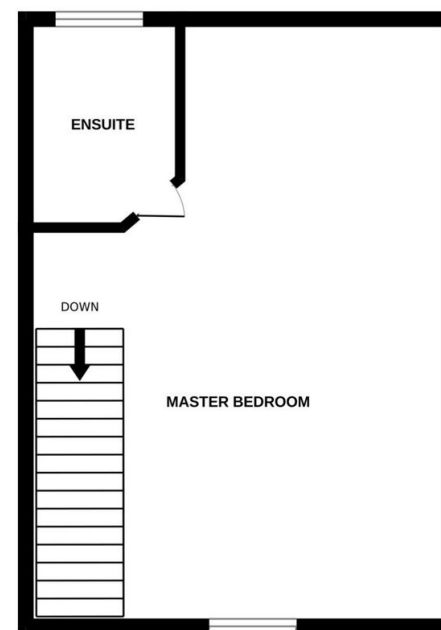
GROUND FLOOR



1ST FLOOR



2ND FLOOR



Whilst every attempt has been made to ensure the accuracy of the floorplan contained here, measurements of doors, windows, rooms and any other items are approximate and no responsibility is taken for any error, omission or mis-statement. This plan is for illustrative purposes only and should be used as such by any prospective purchaser. The services, systems and appliances shown have not been tested and no guarantee as to their operability or efficiency can be given.
Made with Metropix ©2024

