



Holderness Close, Stenson Fields, Derby



2



1



1

£165,000

- Two Double Bedrooms
- Driveway and Garage
- Popular Location
- Enclosed Rear Garden
- Council Tax Band B
- No Onward Chain
- Freehold
- EPC rating E



Two Bedroom Bungalow being sold with NO UPWARD CHAIN. Located in Popular Stenson Fields, within easy reach of all local amenities and bus routes.

In brief the property comprises; - Entrance Hallway, Kitchen, Living/Dining Room, Two Bedrooms and Bathroom. The property also benefits from gas central heating, uPVC Double Glazing, Private Garden, Driveway and Garage.

Entrance Hall 2.77m x 0.79m (9'1" x 2'7")

Entrance Hallway providing access to all rooms, with carpet to the floor and radiator.

Kitchen 2.84m x 2.58m (9'4" x 8'6")

The kitchen offers a range of dark wood wall and base units, integrated oven and hob. uPVC double glazed window overlooking the front elevation and radiator.

Living Room 2.86m x 4.77m (9'5" x 15'7")

The large living area has uPVC double glazed window overlooking the front elevation, radiator and gas feature fireplace.

Bedroom One 2.33m x 3.76m (7'7" x 12'4")



A double room with built in storage, uPVC double glazed window overlooking the rear elevation and radiator.

Bedroom Two 2.65m x 2.61m (8'8" x 8'7")

Another double with radiator and two uPVC double glazed windows overlooking the rear and side elevations.

Bathroom 1.69m x 1.64m (5'6" x 5'5")

The bathroom is fully tiled offering three-piece suite, low level W/C, Pedestal sink, toilet and bath with shower over.

External

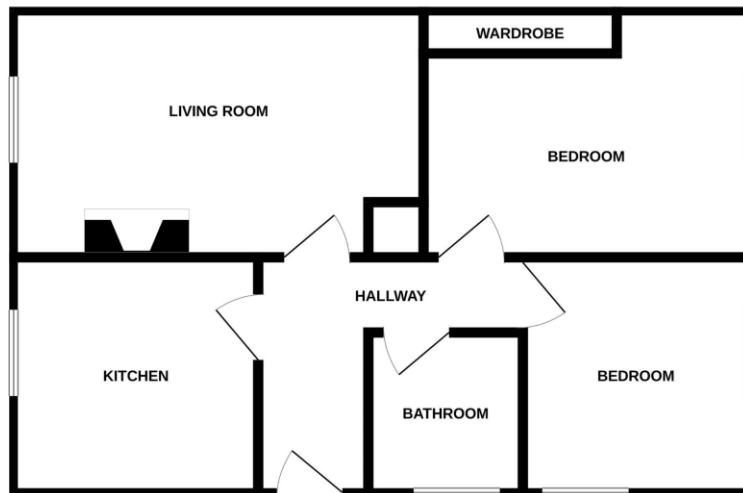
To the front of the property is a low maintenance lawn with concrete driveway to the side. The well-kept rear garden offers patio area, low maintenance lawn. Detached brick built garage.

Disclaimer

These particulars are issued in good faith but do not constitute representations of fact or form part of any offer or contract. The matters referred to in these particulars should be independently verified by prospective buyers or tenants. Neither Northwood nor any of its employees or agents has any authority to make or give any representation or warranty whatever in relation to this property. We endeavor to make our sales particulars accurate and reliable, however, they do not constitute or form part of an offer or any contract and none is to be relied upon as statements of representation or fact. Any services, systems and appliances listed in this specification have not been tested by us and no guarantee as to their operating ability or efficiency is given. All measurements have been taken as a guide to prospective buyers only, and are not precise. If you require clarification or further information on any points, please contact us, especially if travelling some distance



GROUND FLOOR
506 sq.ft. (47.1 sq.m.) approx.



TOTAL FLOOR AREA: 506 sq.ft. (47.1 sq.m.) approx.
Whilst every attempt has been made to ensure the accuracy of the floorplan contained here, measurements of doors, windows, rooms and any other items are approximate and no responsibility is taken for any error, omission or mis-statement. This plan is for illustrative purposes only and should be used as such by any prospective purchaser. The services, systems and appliances shown have not been tested and no guarantee as to their operability or efficiency can be given.
 Made with Measure ©2023



Northwood Derbyshire Limited

01332851570

derby@northwooduk.com