



**£250,000**

**TENURE : LEASEHOLD**

**The ridgeway, E4 6TP**

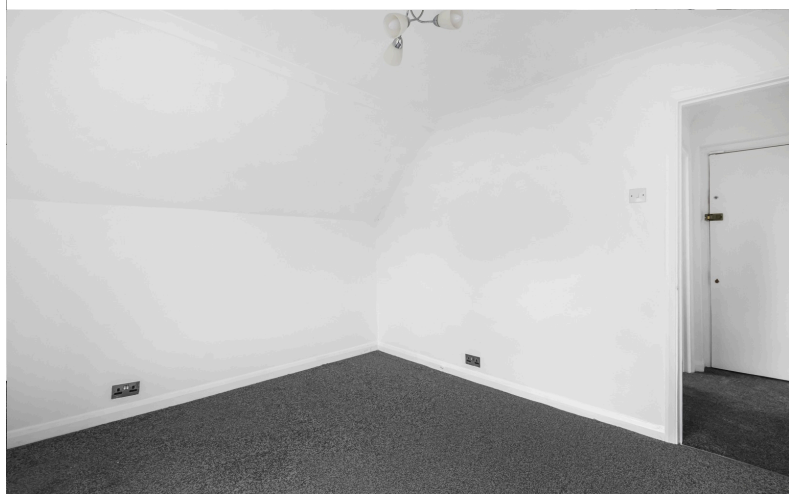
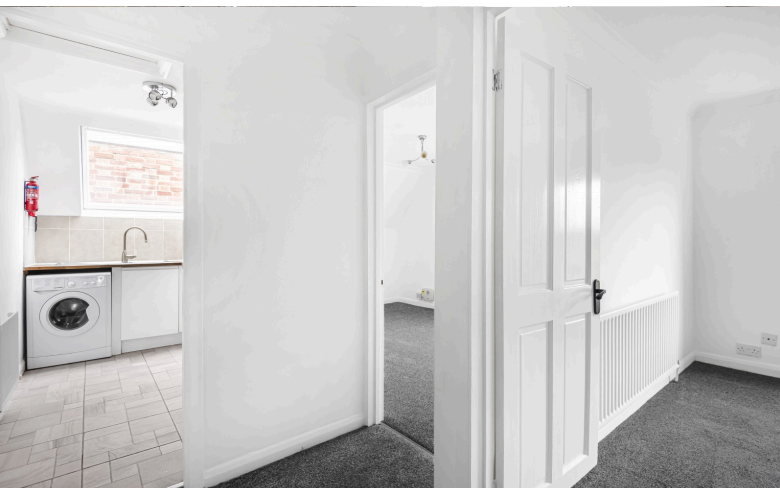
**Bedrooms : 1**

**Bathrooms : 1**

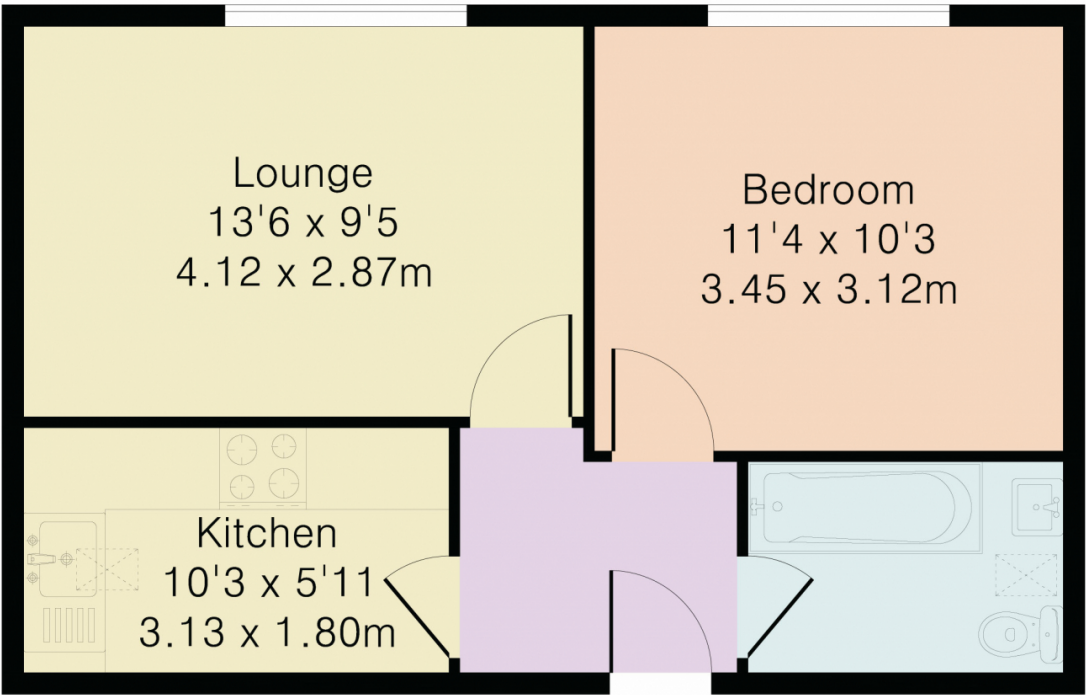
**Reception Rooms : 1**

**Addison Townsend**  
155 High Street, Southgate, London, N14 6BP  
[info@addisontownsend.co.uk](mailto:info@addisontownsend.co.uk) | 02088826828  
Website: <https://www.addisontownsend.co.uk/>



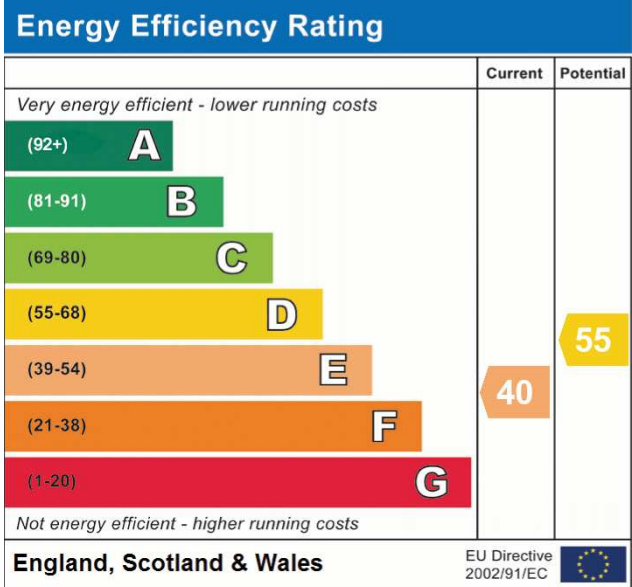


Approximate Gross Internal Area 391 sq ft - 36 sq m



PINK PLAN

Although Pink Plan Ltd ensures the highest level of accuracy, measurements of doors, windows and rooms are approximate and no responsibility is taken for error, omission or misstatement. These plans are for representation purposes only as defined by RICS code of measuring practise. No guarantee is given on total square footage of the property within this plan. The figure icon is for initial guidance only and should not be relied on as a basis of valuation.



**Addison Townsend**  
155 High Street, Southgate, London, N14 6BP  
[info@addisontownsend.co.uk](mailto:info@addisontownsend.co.uk) | 02088826828  
Website: <https://www.addisontownsend.co.uk/>

