



 6

Bedrooms

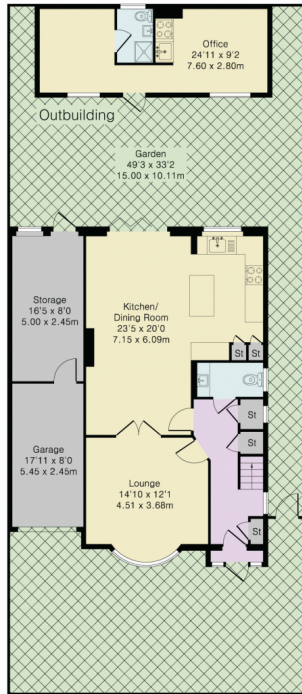
 5

Bathrooms



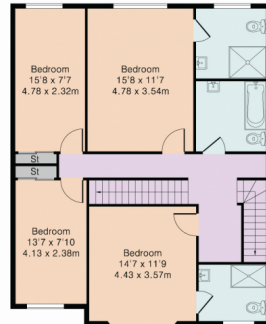


Addison Townsend are delighted to offer for sale this stunning detached house with double story rear extension and loft conversion offering 2614 square foot of accommodation. The property is located in this quiet residential location within 0.2 miles of Oakwood Underground Station, close to Oakwood and Trent Park and in excellent primary and secondary school catchments. The property is entered via a spacious entrance hall, with guest W.C., which provides access to two spacious reception rooms the rear open plan to a fitted kitchen/breakfast room. The first floor accommodation is accessed off of a bright and spacious landing and offers four double bedrooms with en-suite shower rooms to the two main bedrooms and a large family bathroom. The loft has been converted and offers a further en-suite bedroom with balcony and a sixth bedroom. Externally the property offers a West facing rear garden with side access, storage area, and self contained annexe to the rear. The front has been paved to provide a large driveway which provides access to the integral garage. Chain Free.

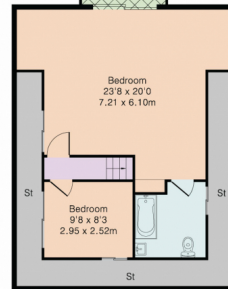


Ground Floor

Approximate Gross Internal Area 2614 sq ft – 243 sq m
 Ground Floor Area 946 sq ft – 88 sq m
 First Floor Area 920 sq ft – 86 sq m
 Second Floor Area 519 sq ft – 48 sq m
 Outbuilding Area 229 sq ft – 21 sq m



First Floor



Second Floor

Energy Efficiency Rating		
	Current	Potential
Very energy efficient - lower running costs		
(92+) A		
(81-91) B		83
(69-80) C	71	
(55-68) D		
(39-54) E		
(21-38) F		
(1-20) G		
Not energy efficient - higher running costs		
England, Scotland & Wales		EU Directive 2002/91/EC

Address: Chestnut Close, London, N14



Although Pink Plan Ltd ensures the highest level of accuracy, measurements of doors, windows and rooms are approximate and no responsibility is taken for error, omission or misstatement. These plans are for representation purposes only as defined by RICS code of measuring practise. No guarantee is given on total square footage of the property within this plan. The figure icon is for initial guidance only and should not be relied on as a basis of valuation.

