



5

Bedrooms



2

Bathrooms

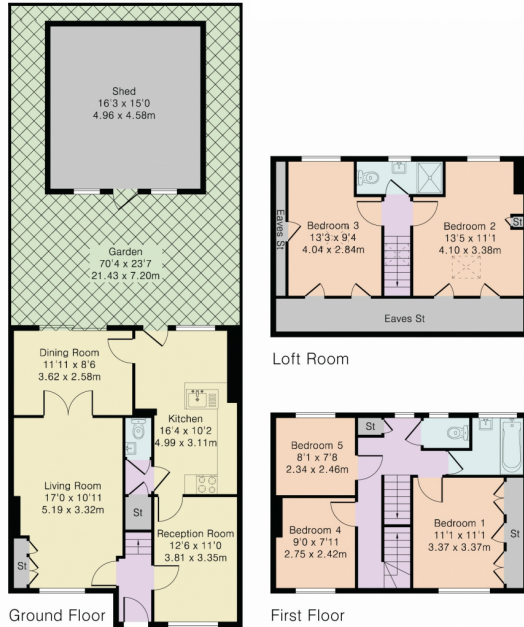




Addison Townsend are delighted to offer this spacious double fronted mid terraced house located in a quiet residential road within 0.4 miles of Oakwood Underground Station, within excellent school catchments and close to local parks. The property offers five bedrooms, two reception rooms, large kitchen, dining area, downstairs W/C, family bathroom, en-suite, large rear garden, off street parking and plenty of storage. The property is offered for sale chain free.



Approximate Gross Internal Area 1615 sq ft – 150 sq m  
Ground Floor Area 860 sq ft – 80 sq m  
First Floor Area 422 sq ft – 39 sq m  
Loft Room Area 333 sq ft – 31 sq m



Although Pink Plan Ltd ensures the highest level of accuracy, measurements of doors, windows and rooms are approximate and no responsibility is taken for error, omission or misstatement. These plans are for representation purposes only as defined by RICS code of measuring practise. No guarantee is given on total square footage of the property within this plan. The figure icon is for initial guidance only and should not be relied on as a basis of valuation.



Energy Efficiency Rating		
	Current	Potential
<i>Very energy efficient - lower running costs</i>		
(92+) <b>A</b>		
(81-91) <b>B</b>		
(69-80) <b>C</b>		<b>79</b>
(55-68) <b>D</b>	<b>64</b>	
(39-54) <b>E</b>		
(21-38) <b>F</b>		
(1-20) <b>G</b>		
<i>Not energy efficient - higher running costs</i>		
<b>England, Scotland &amp; Wales</b>		EU Directive 2002/91/EC

Address: Addison Avenue, N14

