

Threeways

Longford, Ashbourne, DE6 3DR

John German





Threeways

Longford, Ashbourne, DE6 3DR

£750,000

Extended four-bedroom detached home on 0.30 acre plot in sought-after Longford, within the Ashbourne golden triangle. Over 1,900 sq ft of living space, double garage, two reception rooms, four double bedrooms. Ideal family home close to schools and countryside walks.

Threeways is a well-proportioned and extended four-bedroom detached home set on a generous plot of approximately 0.30 acre in the sought-after village of Longford, located within the Ashbourne golden triangle. Offering over 1,900 sq ft of internal living space, this property is ideally suited to families looking for space, practicality, and a desirable rural setting with easy access to Ashbourne, Derby and Uttoxeter that has a local Waitrose. The property is immaculately presented throughout and benefits from two spacious reception rooms, four double bedrooms, and a double integral garage, providing ample accommodation for modern family life.

The location offers a peaceful village environment with easy access to open countryside and country walks, while remaining within reach of well-regarded local schools, including a good village primary school. Longford continues to attract families looking for the balance of rural charm and convenience, and this home delivers on both. With flexible internal space and a sizeable plot, Threeways offers an ideal long-term home in one of Ashbourne's most desirable areas.

Upon entering the reception hallway, there is tiled flooring throughout and access to the snug, sitting room, dining kitchen, and guest cloakroom. A staircase leads to the first floor, with a useful understairs storage cupboard.

The tiled flooring continues into the spacious dining kitchen, which features rolled edge preparation surfaces with an inset stainless steel sink, drainer, and chrome mixer tap, complemented by matching upstands. A range of base units and drawers are arranged around a breakfast bar peninsula which has power sockets and space for seating. There is space and plumbing for a dishwasher, along with an electric Aga range cooker. Additional units provide storage, and there is freestanding space for a fridge freezer. The dining area is light and airy, benefiting from a triple aspect with a side window and uPVC French doors opening to both the rear and side gardens. A door leads through to the utility room.

The utility room continues the tiled flooring and is fitted with matching rolled edge work surfaces, inset stainless steel sink with drainer, and chrome mixer tap. There is space and plumbing for a fridge, washing machine, and separate tumble dryer, along with additional cupboard storage. A uPVC door provides external access to the side of the property.

The snug is a flexible reception space, suitable for use as a home office, study, or playroom, depending on requirements.

The main sitting room is a generously sized space with both uPVC French doors and sliding doors opening onto the rear garden, offering pleasant views across the garden. A fireplace with oak lintel, granite hearth, and inset log burner forms the focal point of the room.

The guest cloakroom is fitted with a white suite including a wash hand basin with chrome mixer tap.

On the first floor, the landing gives access to all four bedrooms, the family bathroom, an airing cupboard housing the hot water tank with shelving, and a loft hatch.

The principal bedroom is a large double with elevated views over the rear garden and countryside, and benefits from built-in wardrobes. It also has an en suite shower room with tiled flooring, white suite including wash hand basin with chrome mixer tap and vanity storage, low-level WC, double shower unit with mains chrome shower, and a chrome ladder-style heated towel rail.

Bedroom two is another spacious double with dual aspect windows to the front and rear plus a wash hand basin with chrome mixer tap and vanity cupboard.

Bedroom three is a further double enjoying elevated views over the rear garden.

Bedroom four is also a double sized room and is currently used as a study, also benefitting from garden views.

The family bathroom is fitted with a white suite comprising wash hand basin with chrome mixer tap and vanity cupboards, low-level WC, and a bath with chrome mixer tap and mains shower over, along with a glass shower screen.

Externally, the property is set back behind a large gravelled driveway offering off-street parking for multiple vehicles, continuing around to the rear. The front also includes a well-maintained lawn area. The integral double garage is equipped with power, lighting, and an electric up-and-over door.

Astandout feature of this home is the generous plot of approximately 0.30 acre. The rear garden is immaculately presented with a patio seating area, pond, expansive lawn, mature borders with a variety of plants and trees, timber shed, greenhouse, and log store-all backing onto fields.

Please note: the neighbouring property has a right of access along the driveway for septic tank maintenance, though this is infrequently used.

Tenure: Freehold (purchasers are advised to satisfy themselves as to the tenure via their legal representative).
Please note: It is quite common for some properties to have a Ring doorbell and internal recording devices.
Property construction: Standard **Parking:** Drive **Electricity supply:** Mains
Water supply: Mains **Sewerage:** Septic tank **Heating:** Oil
(Purchasers are advised to satisfy themselves as to their suitability).
Broadband type: Fibre to the cabinet
See Ofcom link for speed: <https://checker.ofcom.org.uk/>
Mobile signal/coverage: See Ofcom link <https://checker.ofcom.org.uk/>
Local Authority/Tax Band: Derbyshire Dales District Council / Tax Band G
Useful Websites: www.gov.uk/government/organisations/environment-agency
Our Ref: JGA/01052025

The property information provided by John German Estate Agents Ltd is based on enquiries made of the vendor and from information available in the public domain. If there is any point on which you require further clarification, please contact the office and we will be pleased to check the information for you, particularly if contemplating travelling some distance to view the property. Please note if your enquiry is of a legal or structural nature, we advise you to seek advice from a qualified professional in their relevant field.

We are required by law to comply fully with The Money Laundering Regulations 2017 and as such need to complete AML ID verification and proof / source of funds checks on all buyers and, where relevant, cash donors once an offer is accepted on a property. We use the Checkboard app to complete the necessary checks, this is not a credit check and therefore will have no effect on your credit history. With effect from 1st March 2025 a non-refundable compliance fee of £30.00 inc. VAT per buyer / donor will be required to be paid in advance when an offer is agreed and prior to a sales memorandum being issued.



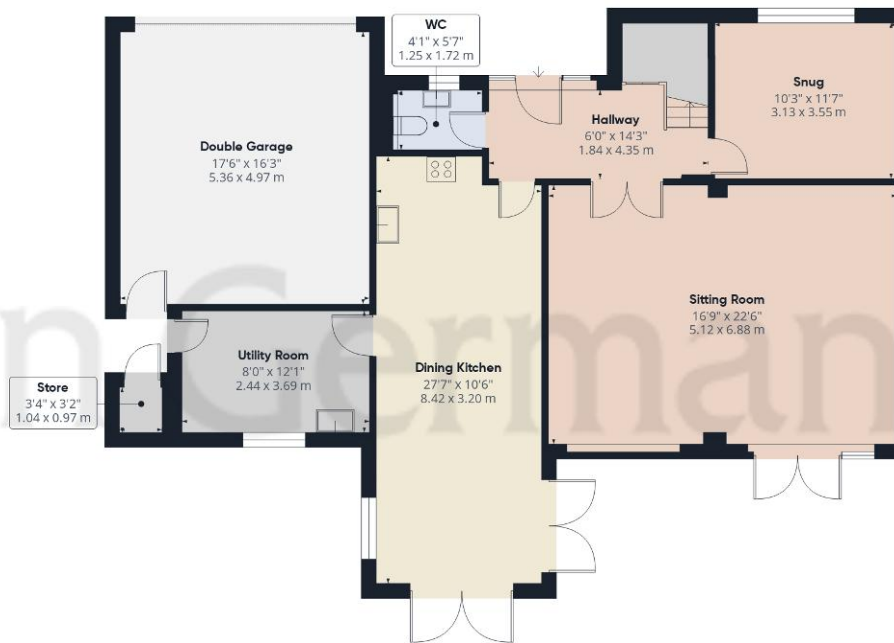


John German

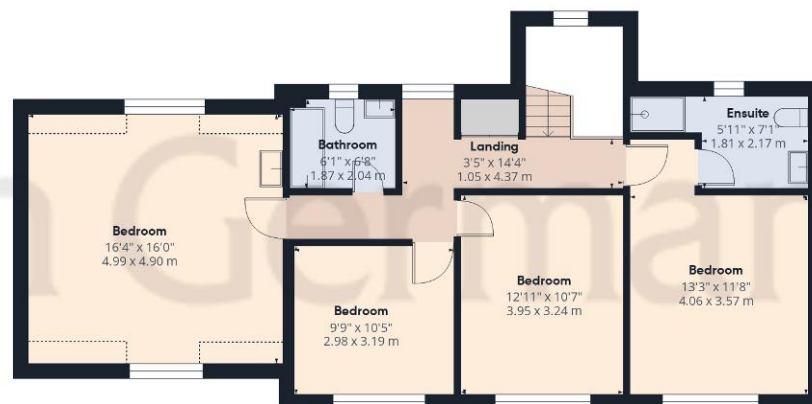








Ground Floor



Floor 1

Approximate total area⁽¹⁾

2207 ft²
205 m²

Reduced headroom

29 ft²
2.7 m²

(1) Excluding balconies and terraces

Reduced headroom

..... Below 5 ft/1.5 m

While every attempt has been made to ensure accuracy, all measurements are approximate, not to scale. This floor plan is for illustrative purposes only.

Calculations were based on RICS IPMS 3C standard. Please note that calculations were adjusted by a third party and therefore may not comply with RICS IPMS 3C.

GIRAFFE360



Agents' Notes

These particulars do not constitute an offer or a contract neither do they form part of an offer or contract. The vendor does not make or give and Messrs. John German nor any person employed has any authority to make or give any representation or warranty, written or oral, in relation to this property. Whilst we endeavour to make our sales details accurate and reliable, if there is any point which is of particular importance to you, please contact the office and we will be pleased to check the information for you, particularly if contemplating travelling some distance to view the property. None of the services or appliances to the property have been tested and any prospective purchasers should satisfy themselves as to their adequacy prior to committing themselves to purchase.

Referral Fees

Mortgage Services - We routinely refer all clients to APR Money Limited. It is your decision whether you choose to deal with APR Money Limited. In making that decision, you should know that we receive on average £60 per referral from APR Money Limited.

Conveyancing Services - If we refer clients to recommended conveyancers, it is your decision whether you choose to deal with this conveyancer. In making that decision, you should know that we receive on average £150 per referral.

Survey Services - If we refer clients to recommended surveyors, it is your decision whether you choose to deal with this surveyor. In making that decision, you should know that we receive up to £90 per referral.

Score	Energy rating	Current	Potential
92+	A		
81-91	B		
69-80	C		71 C
55-68	D	58 D	
39-54	E		
21-38	F		
1-20	G		



John German

Compton House, Shawcroft, Ashbourne, Derbyshire, DE6 1GD

01335 340730

ashbourne@johngerman.co.uk

Ashbourne | Ashby de la Zouch | Barton under Needwood
Burton upon Trent | Derby | East Leake | Lichfield
Loughborough | Stafford | Uttoxeter

JohnGerman.co.uk Sales and Lettings Agent



