

Chatsworth Court

Park View, Park Road, Ashbourne, Derbyshire, DE6 1PF



NO UPWARD CHAIN – A two double bed roomed ground floor apartment situated in the highly convenient McCarthy and Stone retirement home development in the centre of Ashbourne.

Asking Price Of £140,000



John German 

This sale offers an excellent opportunity to acquire this ground floor two double bed roomed apartment, positioned within a McCarthy and Stone development, conveniently located for town centre shops and amenities. Furthermore, the development enjoys a communal lounge with kitchenette area, laundry room with dryers, a large communal well appointed lawned garden and parking for residents and visitors. There is a manager on site, and a guest bedroom with en suite available for a nominal fee per night for visiting guests, and there are regular social events. A 24 hour Careline system is fitted throughout, providing peace of mind. The apartment itself is very conveniently positioned for the lounge, guest suite, laundry room and managers office.

The market town of Ashbourne, known as the Gateway to the famous Peak District National Park, provides an excellent and varied range of amenities including shops, cafes, restaurants, regular bus services, library, park, cinema and recreational facilities.

Entering the apartment, the reception hall has doors off to the lounge/diner, bedrooms, bathroom and two useful storage cupboards which include shelving and the hot water tank. Remote intercom entry system for visitors.

Moving into the lounge / diner, this has electric storage heaters and a fireplace with marble hearth plus double glazed French doors with shutter blinds opening onto the patio garden seating area.

The kitchen has rolled edge preparation surfaces with inset stainless steel sink with adjacent drainer and tile splashback surround. Having a range of cupboards and drawers, appliance space including for a fridge and freezer, an electric oven, and four ring electric hob with extractor fan canopy.

The master bedroom has useful built-in wardrobes with mirrored concertina doors, double glazed window to front and storage heater. The second bedroom, which is also double, has a double glazed window to front and an electric radiator.

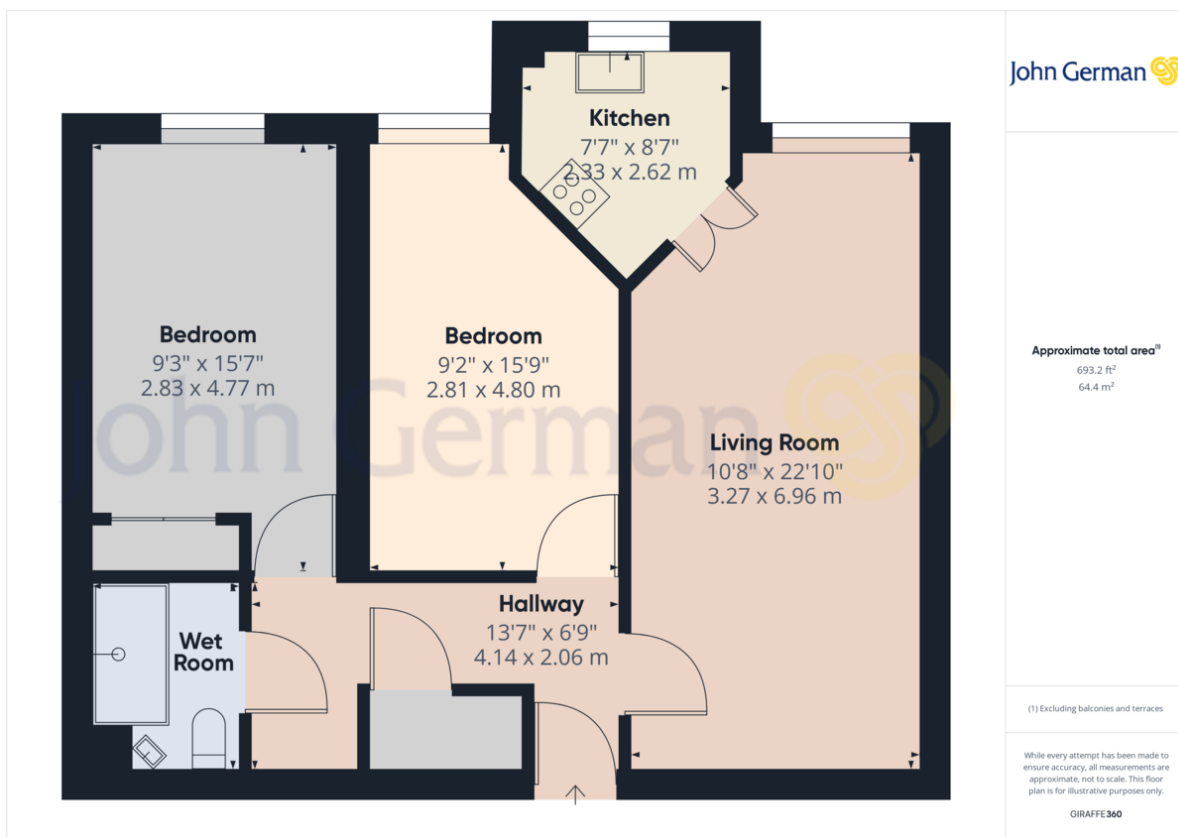
The apartment benefits from a practical wet room which has been fully tiled, having a wash hand basin with chrome mixer tap, WC, chrome overhead shower with alternative handheld shower head, handrail, chrome ladder style heated towel rail and extractor fan.

Tenure: Leasehold (purchasers are advised to satisfy themselves as to the tenure via their legal representative). 125 year lease from December 2002. Ground rent approx. £212.50 per half year. Service charge approx. £2251 per half year. At least one resident should be a minimum age of 60 and any second resident over the age of 55.

Property construction: Standard
Electricity supply: Mains
Sewerage: Mains
Broadband type: Superfast Fibre
 See Ofcom link for speed: <https://checker.ofcom.org.uk/>
Mobile signal/coverage: See Ofcom link <https://checker.ofcom.org.uk/>
Local Authority/Tax Band: Derbyshire Dales District Council / Tax Band C
Our Ref: JGA/13052024

Parking: Residents
Water supply: Mains
Heating: Electric

The property information provided by John German Estate Agents Ltd is based on enquiries made of the vendor and from information available in the public domain. If there is any point on which you require further clarification, please contact the office and we will be pleased to check the information for you, particularly if contemplating travelling some distance to view the property. Please note if your enquiry is of a legal or structural nature, we advise you to seek advice from a qualified professional in their relevant field.







Score	Energy rating	Current	Potential
92+	A		
81-81	B	82 B	85 B
69-80	C		
55-68	D		
39-54	E		
21-38	F		
1-20	G		



John German

Compton House, Shawcroft, Ashbourne, Derbyshire, DE6 1GD

01335 340730

ashbourne@johngerman.co.uk

Agents' Notes

These particulars do not constitute an offer or a contract neither do they form part of an offer or contract. The vendor does not make or give and Messrs. John German nor any person employed has any authority to make or give any representation or warranty, written or oral, in relation to this property. Whilst we endeavour to make our sales details accurate and reliable, if there is any point which is of particular importance to you, please contact the office and we will be pleased to check the information for you, particularly if contemplating travelling some distance to view the property. None of the services or appliances to the property have been tested and any prospective purchasers should satisfy themselves as to their adequacy prior to committing themselves to purchase.

Referral Fees

Mortgage Services - We routinely refer all clients to APR Money Limited. It is your decision whether you choose to deal with APR Money Limited. In making that decision, you should know that we receive on average £60 per referral from APR Money Limited.

Conveyancing Services - If we refer clients to recommended conveyancers, it is your decision whether you choose to deal with this conveyancer. In making that decision, you should know that we receive on average £150 per referral.

Survey Services - If we refer clients to recommended surveyors, it is your decision whether you choose to deal with this surveyor. In making that decision, you should know that we receive up to £90 per referral.

Ashbourne | Ashby de la Zouch | Barton under Needwood
Burton upon Trent | Derby | East Leake | Lichfield
Loughborough | Stafford | Uttoxeter

JohnGerman.co.uk Sales and Lettings Agent