



A superb first floor '1 Pad' apartment in this popular residential development. Ideally situated for Middlesbrough town centre, James Cook University Hospital, Teesside University and excellent transport links, it will appeal to investors looking to add to their portfolio or first time buyers. Comprising of an open plan lounge/kitchen overlooking, a fitted bathroom and a master bedroom. The property is for sale with no forward chain, vacant possession.

Clough Close, Linthorpe, Middlesbrough, TS5 5EU

1 Bed - Flat

Offers Over £45,000

EPC Rating: B

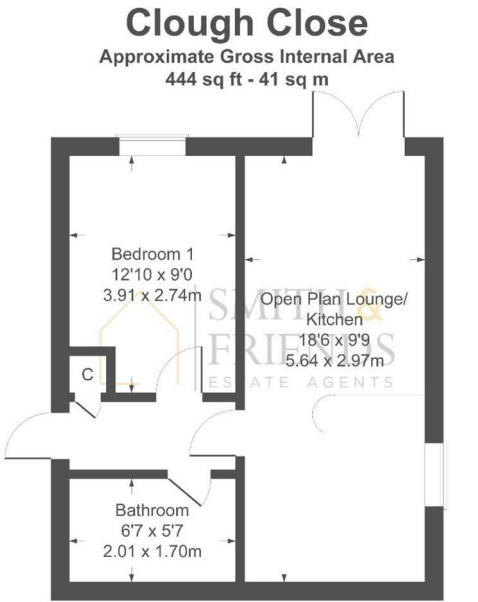
Council Tax Band: A

Tenure: Leasehold



Clough Close, Middlesbrough, TS5 5EU

- Hallway
- Lounge/Kitchen
- Bedroom
- Bathroom
- External



Not to Scale. Produced by The Plan Portal 2025
For Illustrative Purposes Only.

For clarification we wish to inform prospective purchasers that we have prepared these sales particulars as a general guide. We have not carried out a detailed survey, nor tested the services, appliances and specific fittings. Room sizes should not be relied upon for carpets and furnishings, if there are important matters which are likely to affect your decision to buy, please contact us before viewing the property. Smith & Friends Estate Agents can recommend financial services, surveying, conveyancing and removal services to sellers and buyers. Smith & Friends Estate Agents staff may benefit from referral incentives relating to these services.

Energy Efficiency Rating		
	Current	Potential
Very energy efficient - lower running costs		
(92 plus) A		
(81-91) B	84	84
(69-80) C		
(55-58) D		
(39-54) E		
(21-38) F		
(1-20) G		
Not energy efficient - higher running costs		
England & Wales	EU Directive 2002/91/EC	