

Marlborough Road, N22 8NL

£239,995 sof

Located in the sought-after area of Bowes Park, this well-presented first-floor studio flat offers a bright and airy open-plan living space, a modern fitted kitchen with ample storage, and a modern bathroom. The property also benefits from off street parking, a rare advantage in this vibrant neighborhood. With excellent transport links, including Bowes Park railway station and Bounds Green Underground (Piccadilly Line) just a short walk away, commuting to Central London is effortless. Surrounded by independent cafes, shops, on the popular Myddleton road, this charming studio is perfect for first-time buyers, professionals, or investors looking for a convenient and desirable location. Early viewing is highly recommended.

T: 0208 365 8900 E: boundsgreen@wilkinsonbyrne.com W: www.wilkinsonbyrne.com



These particulars, whilst believed to be accurate set out as a general outline only for guidance and do not constitute any part of an offer or contract. Intending purchasers should not rely on them as fittings. Room sizes should not be relied upon for carpets and furnishings. The measurements given are approximate. No person in this firm's employment has the authority to make or give any representation or warranty in respect of the property.

Marlborough Road, London, N22



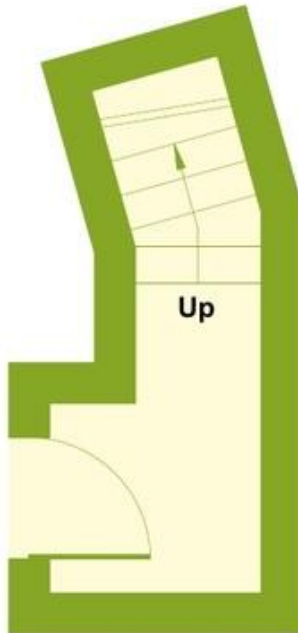
Denotes restricted
head height

Approximate Area = 419 sq ft / 38.9 sq m

Limited Use Area(s) = 27 sq ft / 2.5 sq m

Total = 446 sq ft / 41.4 sq m

For identification only - Not to scale



GROUND FLOOR

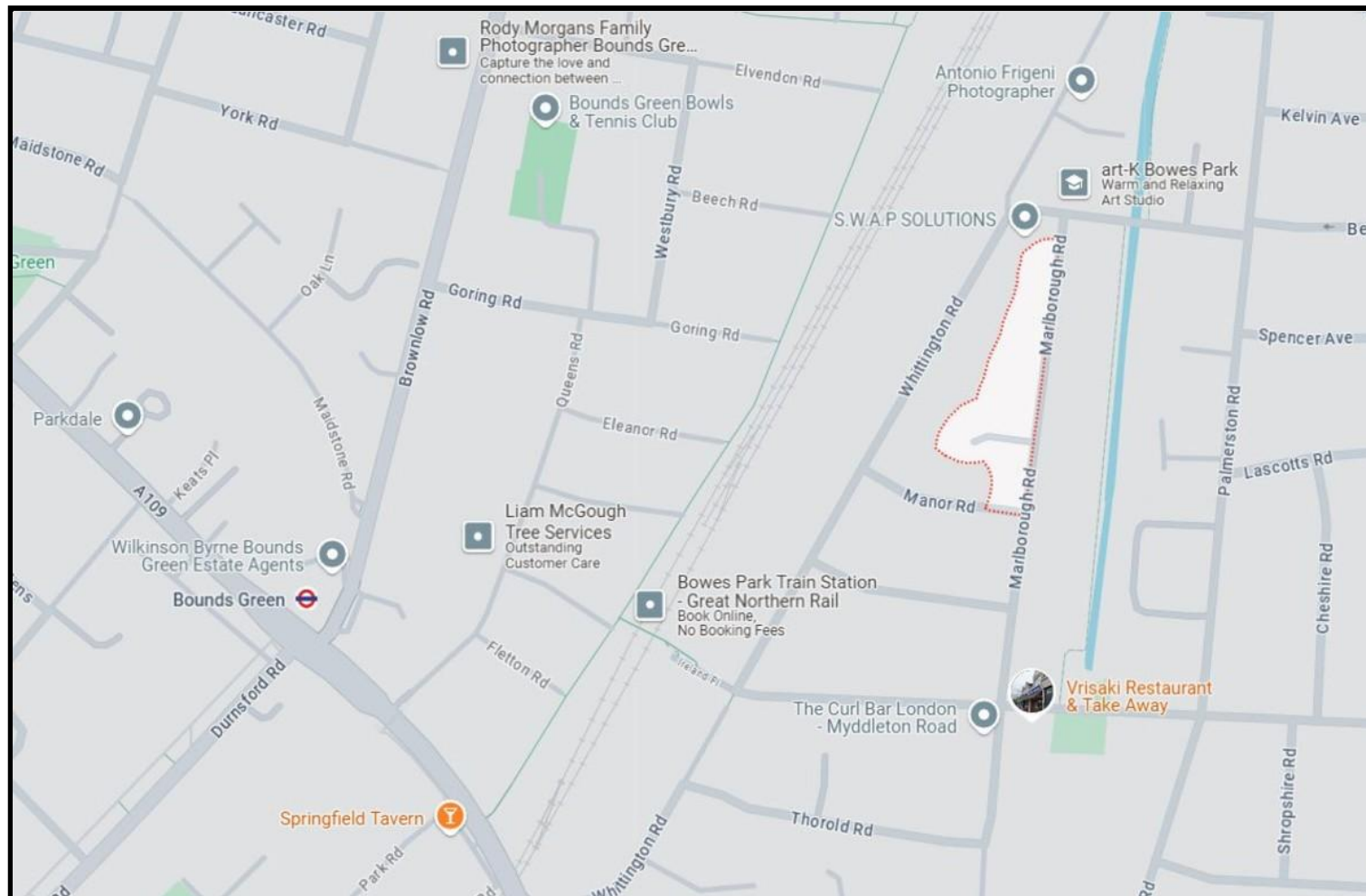


FIRST FLOOR



Floor plan produced in accordance with RICS Property Measurement 2nd Edition,
Incorporating International Property Measurement Standards (IPMS2 Residential). © nitchecom 2025.
Produced for Wilkinson Byrne. REF: 1239668





Score	Energy rating	Current	Potential
92+	A		
81-91	B		
69-80	C		76 C
55-68	D	57 D	
39-54	E		
21-38	F		
1-20	G		

Bounds Green Office
 3 Latham Court
 Brownlow Road
 London N11 2ES
 0208 - 365 - 8900
boundsgreen@wilkinsonbyrne.com

Turnpike Lane Office
 8 Turnpike Parade
 Green Lanes
 London N15 3EA
 0208 - 888 - 0022
turnpikelane@wilkinsonbyrne.com