



Haywood Court, N11 2BE

£1,450 PCM

Discover this charming one-bedroom flat available for rent in a well-maintained purpose-built block. Situated on the first floor, this spacious flat features a large lounge with floor-to-ceiling windows, a fitted kitchen, a modern bathroom, and a generous double bedroom with built-in wardrobes. Additional benefits include gas central heating, double glazing, and an entry phone system. Conveniently located in a quiet cul-de-sac, it's just a short walk to Bounds Green tube station and Bowes Park railway station. Don't miss out on this fantastic opportunity.

T: 0208 888 0022 E: turnpikelane@wilkinsonbyrne.com W: www.wilkinsonbyrne.com

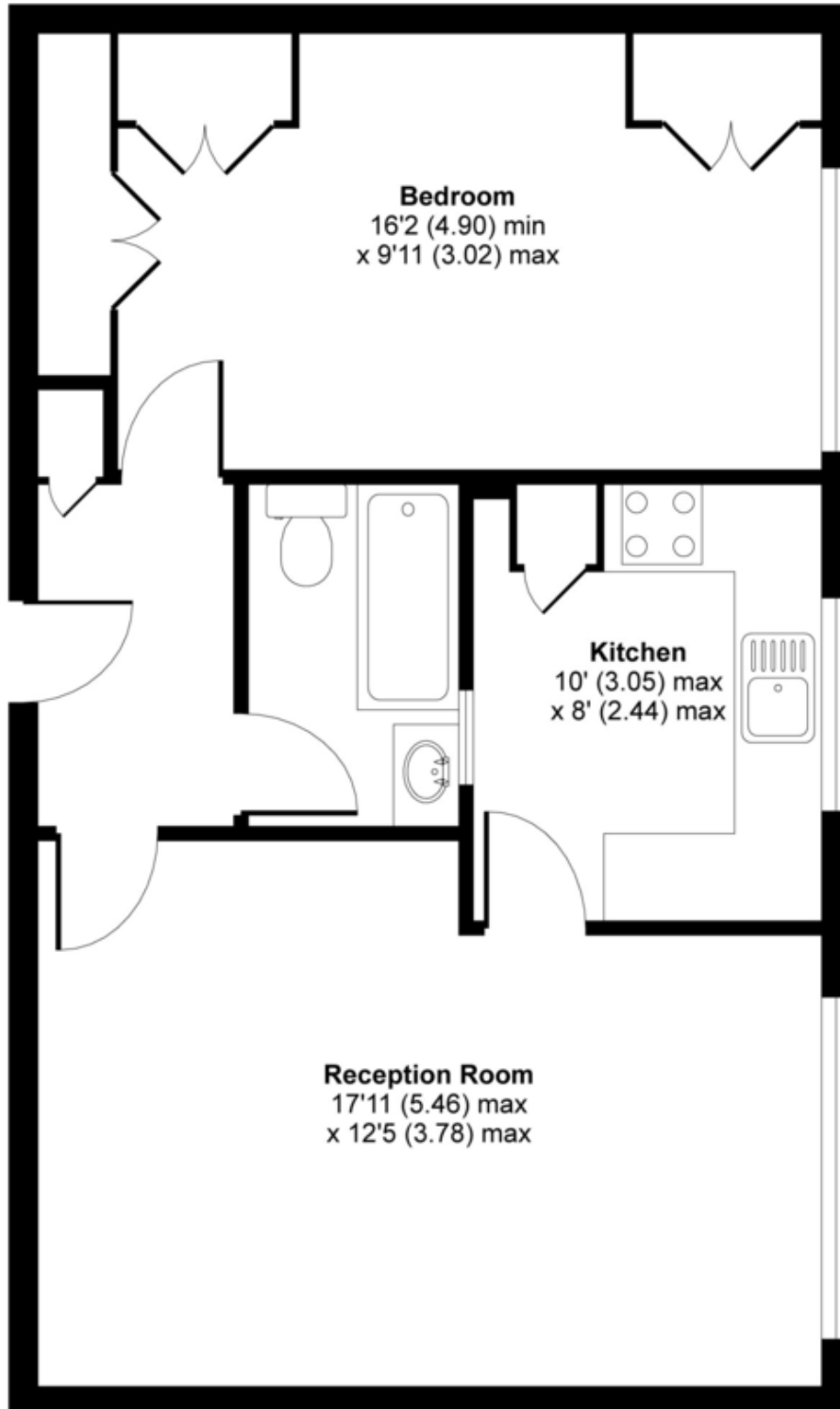
The Property Misdescriptions Act 1991: None of the statements contained in these particulars as to this property are to be relied on as statements of representations of fact. Wilkinson Byrne has no tested any equipment, fixtures or fittings or services and so cannot confirm that they are in working order. Wilkinson Byrne have not sighted of the title documents and any reference to the tenure of the property is based on information supplied by the seller. Wilkinson Byrne are unable to confirm that the relevant Planning Permission and/or Building Regulation Approval has been obtained where any structural alterations have occurred. A buyer is advised to obtain verification from their solicitor or surveyor of any of the above or any other fact prior to making an offer. Photographs are provided for illustration purposes only and do not depict what is included in the sale. All measurements are taken using a sonic tape, are approximate and for guidance only.



These particulars, whilst believed to be accurate set out as a general outline only for guidance and do not constitute any part of an offer or contract. Intending purchasers should not rely on them as fittings. Room sizes should not be relied upon for carpets and furnishings. The measurements given are approximate. No person in this firm's employment has the authority to make or give any representation or warranty in respect of the property.

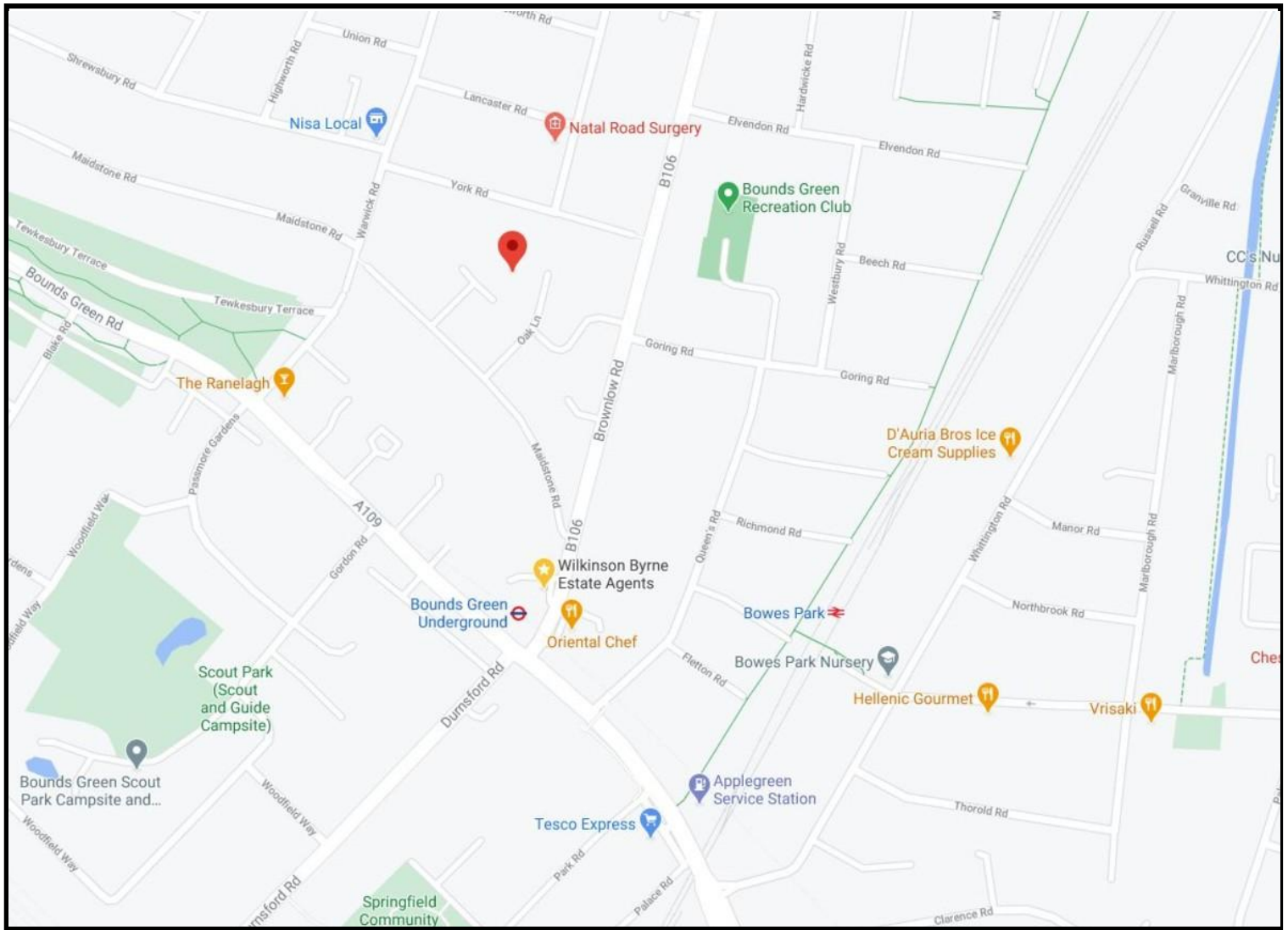
Oak Lane, London, N11

APPROX. GROSS INTERNAL FLOOR AREA 558 SQ FT 51.8 SQ METRES



FIRST FLOOR

Whilst every attempt has been made to ensure the accuracy of the floor plan contained here, measurements of doors, windows and rooms are approximate and no responsibility is taken for any error, omission or misstatement. These plans are for representation purposes only as defined by RICS Code of Measuring Practice and should be used as such by any prospective purchaser. Specifically no guarantee is given on the total square footage of the property if quoted on this plan. Any figure given is for initial guidance only and should not be relied on as a basis of valuation.



Score	Energy rating	Current	Potential
92+	A		
81-91	B		
69-80	C	75 C	78 C
55-68	D		
39-54	E		
21-38	F		
1-20	G		

Bounds Green Office
 3 Latham Court
 Brownlow Road
 London N11 2ES
 0208 - 365 - 8900

boundsgreen@wilkinsonbyrne.com

Turnpike Lane Office
 8 Turnpike Parade
 Green Lanes
 London N15 3EA
 0208 - 888 - 0022

turnpikelane@wilkinsonbyrne.com