



Plot 86

Valley View | | Harleston | IP20 9JL

Guide Price £395,000

DURRANTS
SINCE 1853

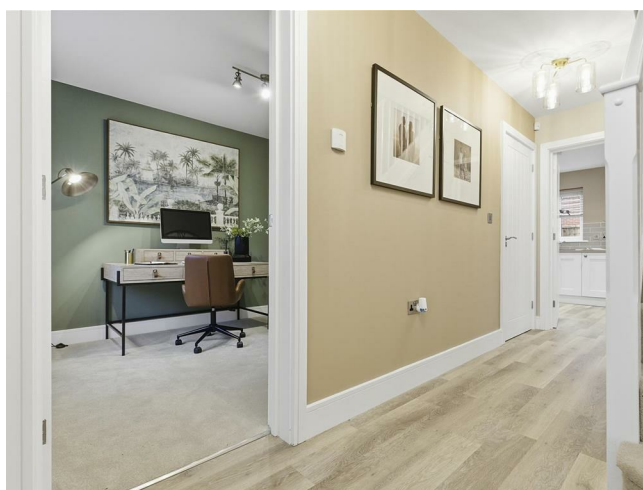
Key features

- Brand New Four Bedroom Detached House
- Bedroom One with En-Suite and Fitted Wardrobe
- Separate Study
- Air source heat pump with underfloor heating to the Ground Floor
- Double Garage
- Located on a private driveway
- 10 Year Premier Guarantee Warranty
- Predicted EPC - B Rating

Description

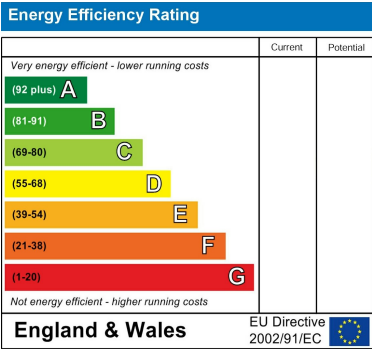
Plot 86 The Rowan- A Four Bedroom Detached House comprising of a kitchen/dining room, living room, family bathroom, en-suite and cloakroom with double garage This house will be ready to move into in January. ** SALES OFFICE OPEN 7 DAYS A WEEK 10AM - 5PM**

Directions





Floor plans



32-34 The Thoroughfare
Harleston
Norfolk
IP20 9AU
01379 852217
harleston@durrants.com
<https://durrants.com/>