



Briar Road | | Harleston | IP20 9DU

£200,000

**DURRANTS**  
SINCE 1853

## Key features

## Description

A recently improved semi-detached bungalow with good sized garden and still offering further potential. It is a tucked-away residential position within the sought -after market town of Harleston.

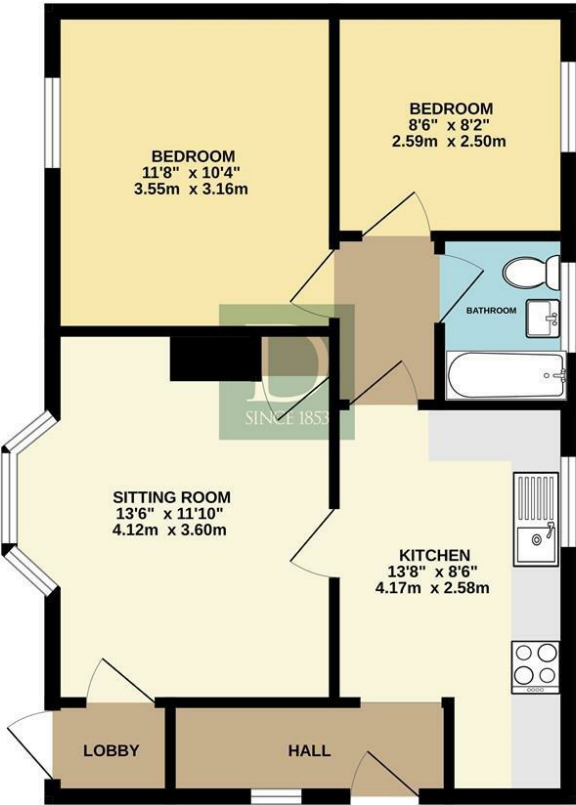
## Directions



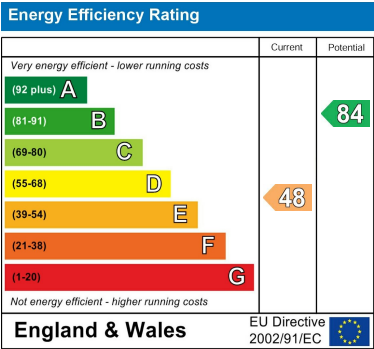


Floor plans

GROUND FLOOR  
541 sq.ft. (50.3 sq.m.) approx.



TOTAL FLOOR AREA : 541 sq.ft. (50.3 sq.m.) approx.  
Whilst every attempt has been made to ensure the accuracy of the floorplan contained here, measurements of doors, windows, rooms and any other items are approximate and no responsibility is taken for any error, omission or mis-statement. This plan is for illustrative purposes only and should be used as such by any prospective purchaser. The services, systems and appliances shown have not been tested and no guarantee as to their operability or efficiency can be given.  
Made with Metropix ©2025



32-34 The Thoroughfare  
Harleston  
Norfolk  
IP20 9AU  
01379 852217  
harleston@durrants.com  
<https://durrants.com/>