



Plot 1

Greensleeves | | Debenham | IP14 6FH

Price Guide £750,000

DURRANTS
SINCE 1853

Key features

- SHOW HOME FOR SALE! READY TO MOVE INTO NOW
- No Onward Chain
- South Facing Rear Garden
- Double Garage with electric and lighting
- Air Source Heating Pump
- Upgraded specification throughout
- Fitted wardrobes to bedroom 1 and 2
- High Quality wooden windows and doors

Description

SHOW HOME FOR SALE - READY TO MOVE IN TO NOW! Plot 1 The Kestrel, built by Five Star developer, Denbury Homes. Featuring upgraded specification throughout, along with a fully landscaped south facing garden and Air Source Heat Pumps.

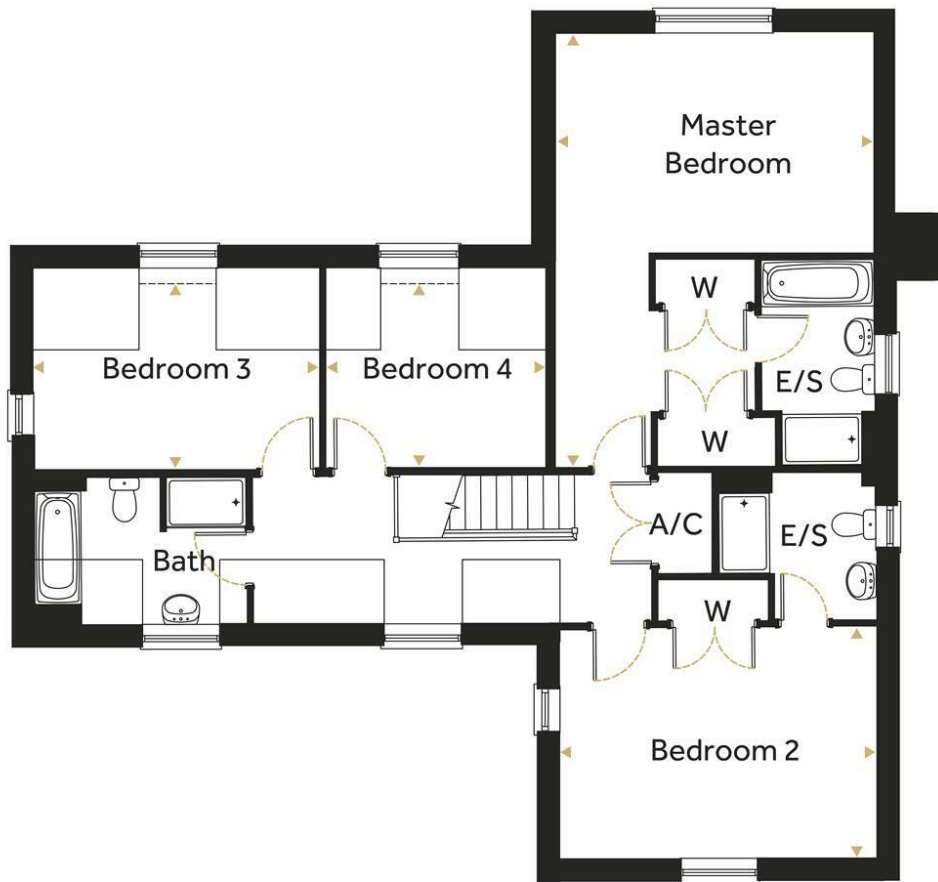



Directions





Floor plans



Energy Efficiency Rating		
	Current	Potential
<i>Very energy efficient - lower running costs</i>		
(92 plus) A		94
(81-91) B	87	
(69-80) C		
(55-68) D		
(39-54) E		
(21-38) F		
(1-20) G		
<i>Not energy efficient - higher running costs</i>		
England & Wales	EU Directive 2002/91/EC 	



2b Market Hill
 Diss
 Norfolk
 IP22 4WH
 01379 642233

diss@durrants.com
<https://durrants.com/>