



Plot 1

Greensleeves | | Debenham | IP14 6FH

Price Guide £750,000

**DURRANTS**  
SINCE 1853



## Key features

- SHOW HOME FOR SALE! READY TO MOVE INTO NOW
- No Onward Chain
- South Facing Rear Garden
- Double Garage with electric and lighting
- Air Source Heating Pump
- Upgraded specification throughout
- Fitted wardrobes to bedroom 1 and 2
- High Quality wooden windows and doors

## Description

SHOW HOME FOR SALE - READY TO MOVE IN TO NOW! Plot 1 The Kestrel, built by Five Star developer, Denbury Homes. Featuring upgraded specification throughout, along with a fully landscaped south facing garden and Air Source Heat Pumps.

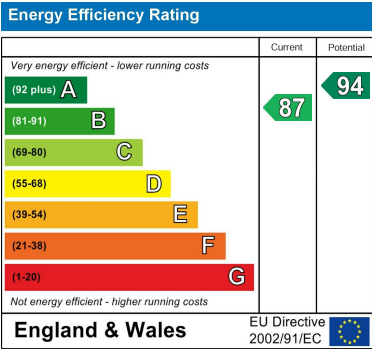
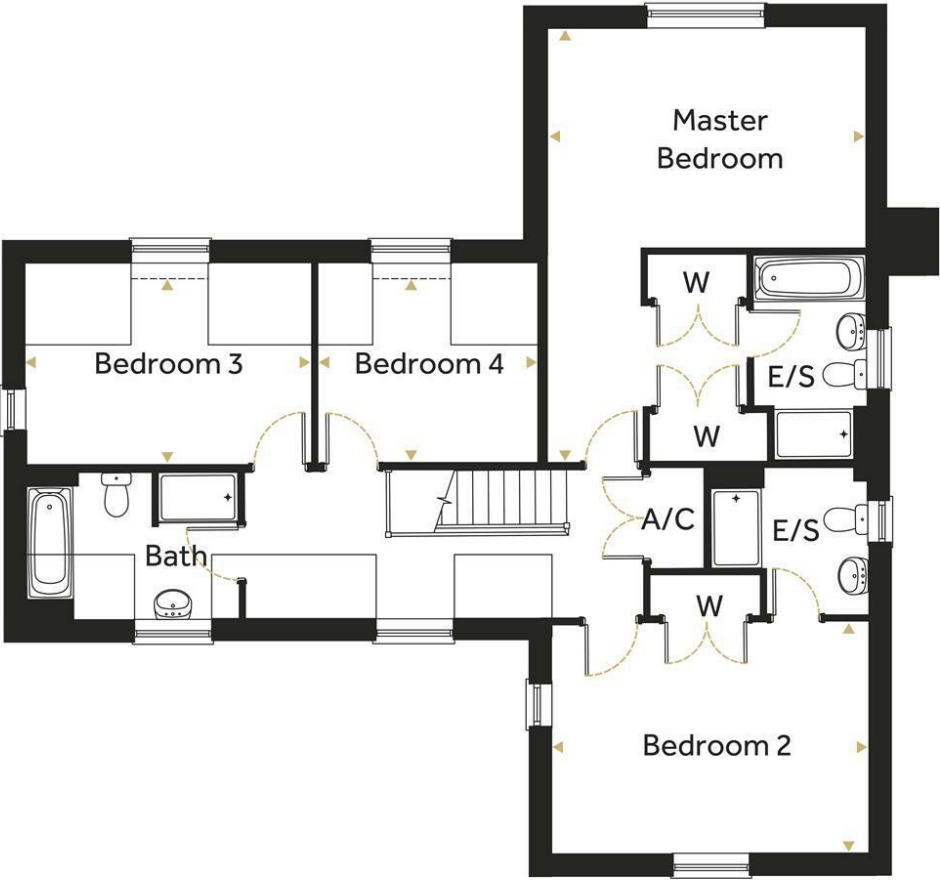


## Directions





Floor plans



2b Market Hill  
Diss  
Norfolk  
IP22 4WH  
01379 642233  
diss@durrants.com  
<https://durrants.com/>