



Warham Road | | Wells-Next-The-Sea | NR23 1JE

Auction Guide £300,000

**DURRANTS**  
SINCE 1853



## Key features

- Highly sought-after location
- In need of updating with huge potential
- Would make an excellent holiday home/let
- 3 bedrooms
- Conservatory
- Far reaching views
- Established garden of c 210 ft.
- No forward chain

## Description

FOR SALE BY AUCTION - 21ST MAY - A charming brick and flint end of terrace cottage with a delightful established garden within the sought-after location of Wells-next-the-Sea. The property now needs updating but would make an excellent holiday home or holiday let property.

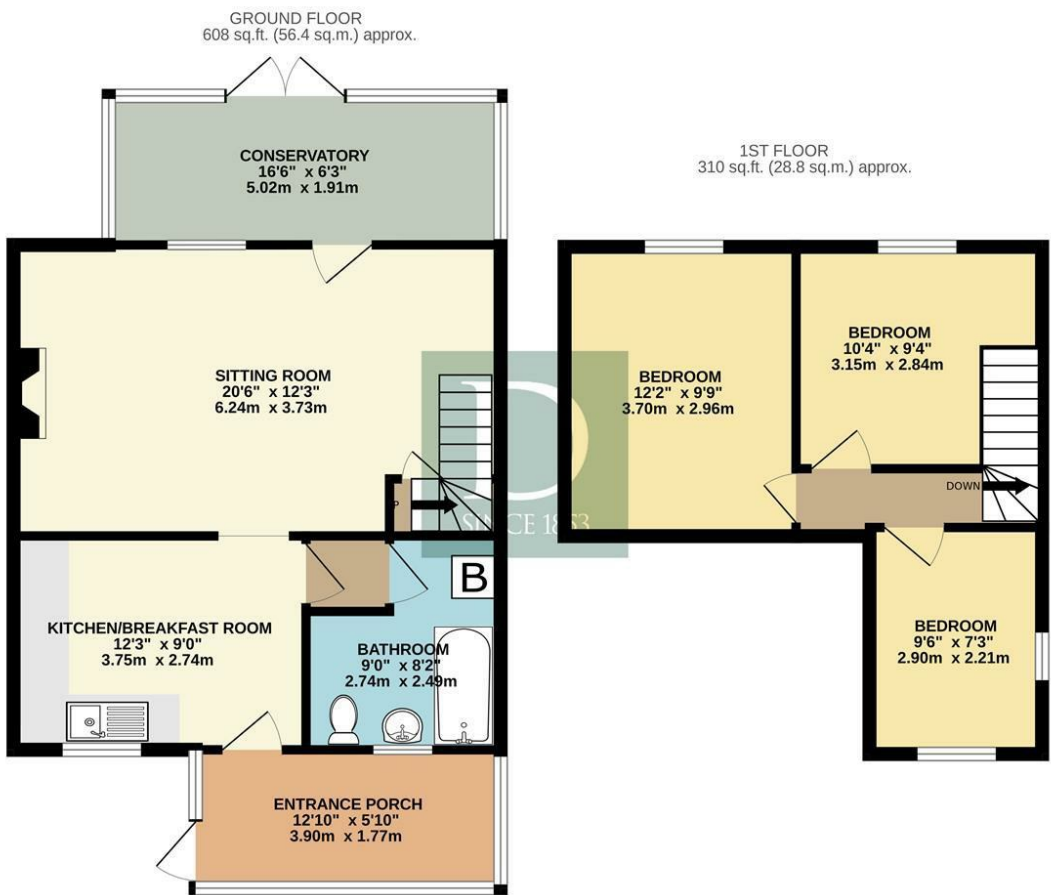
## Directions







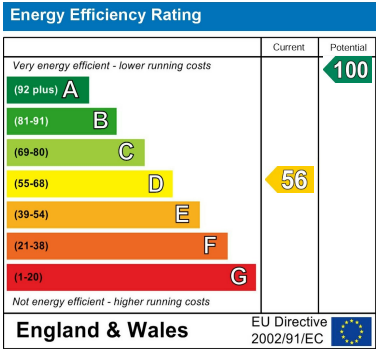
Floor plans



TOTAL FLOOR AREA : 917 sq.ft. (85.2 sq.m.) approx.

Whilst every attempt has been made to ensure the accuracy of the floorplan contained here, measurements of doors, windows, rooms and any other items are approximate and no responsibility is taken for any error, omission or mis-statement. This plan is for illustrative purposes only and should be used as such by any prospective purchaser. The services, systems and appliances shown have not been tested and no guarantee as to their operability or efficiency can be given.

Made with Metropix ©2025



2b Market Hill  
Diss  
Norfolk  
IP22 4WH  
01379 642233  
diss@durrants.com  
<https://durrants.com/>