



Pine Tree Cottage

School Road | Bressingham | Diss | IP22 2AR

Guide Price £575,000

DURRANTS
SINCE 1853

Key features

- Superb Detached Period House
- Abundance of Character and Period Features
- Two Well Appointed Reception Rooms
- Attractive Shaker Style Kitchen
- Three Bedrooms
- Garage and Workshop
- Beautiful Setting
- Far Reaching Rural Views
- Immaculately Presented Home

Description

An attractive and superbly refurbished Grade II Listed period house in an elevated setting with far reaching rural views.



Directions

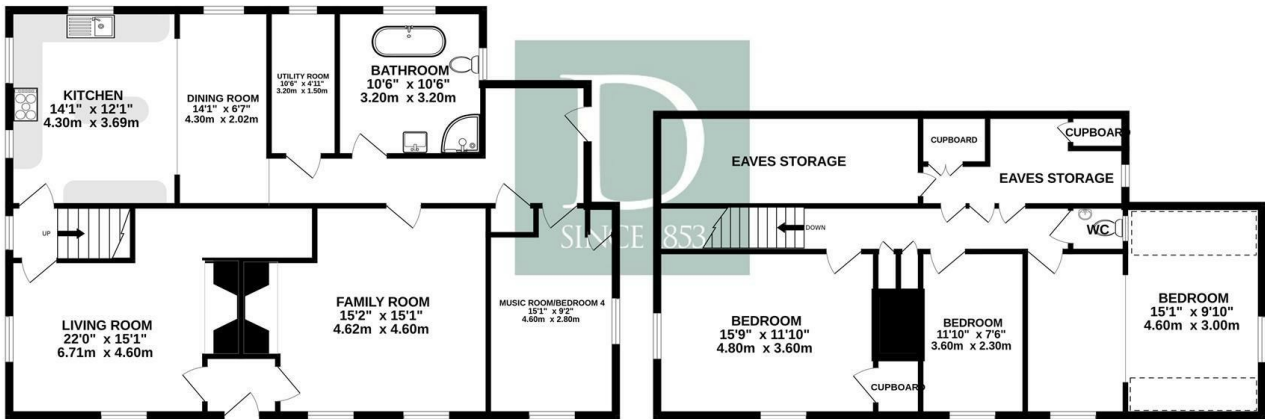




Floor plans

GROUND FLOOR
1175 sq.ft. (109.2 sq.m.) approx.

1ST FLOOR
864 sq.ft. (80.3 sq.m.) approx.



TOTAL FLOOR AREA : 2039 sq.ft. (189.4 sq.m.) approx.

Whilst every attempt has been made to ensure the accuracy of the floorplan contained here, measurements of doors, windows, rooms and any other items are approximate and no responsibility is taken for any error, omission or mis-statement. This plan is for illustrative purposes only and should be used as such by any prospective purchaser. The services, systems and appliances shown have not been tested and no guarantee as to their operability or efficiency can be given.

Made with Metropix ©2024

Energy Efficiency Rating		
	Current	Potential
Very energy efficient - lower running costs		
(92 plus) A		
(81-91) B		
(69-80) C		
(55-68) D		
(39-54) E		
(21-38) F		
(1-20) G		
Not energy efficient - higher running costs		
England & Wales	EU Directive 2002/91/EC	



2b Market Hill
Diss
Norfolk
IP22 4WH
01379 642233
diss@durrants.com
<https://durrants.com/>