



Red House Farm

Rectory Road | Gissing | Diss | IP22 5UX

Guide Price £1,195,000

DURRANTS
SINCE 1853

Key features

- Detached Victorian house
- Refurbished by the current vendor
- Further potential
- Substantial barn with huge potential
- 2 x successful holiday lets
- Beautiful gardens and grounds of 4.78 ares
- Further outbuildings
- Privacy and seclusion
- Area of woodland
- Very well positioned within its plot

Description

A superb detached Victorian farmhouse with substantial barn, two holiday lets and set in wonderful gardens and grounds of 4.78 acres.

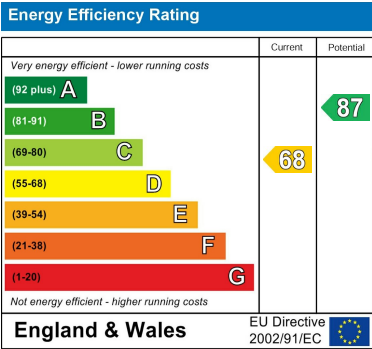
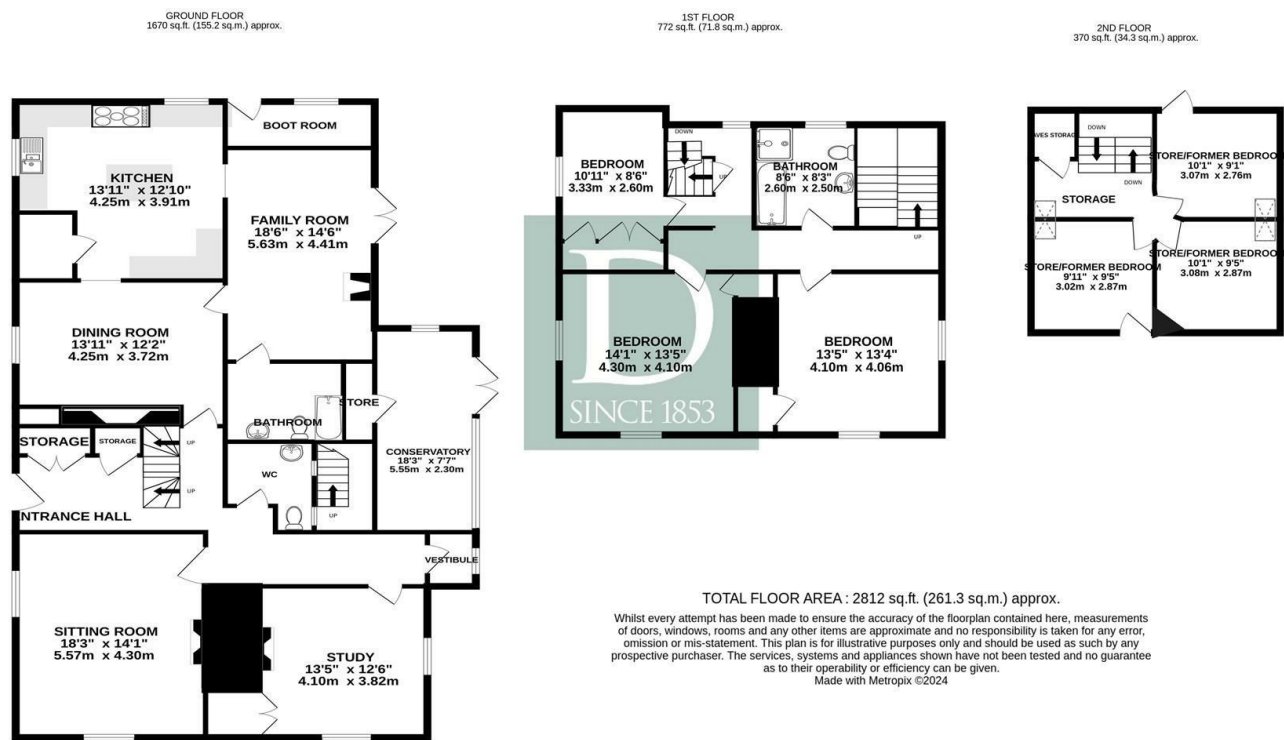


Directions





Floor plans



2b Market Hill
Diss
Norfolk
IP22 4WH
01379 642233
diss@durrants.com
<https://durrants.com/>