



MEADOW CROFT

MILL COMMON WESTHALL, HALESWORTH, IP19 8RQ



This well-presented family home offers spacious and versatile accommodation, including five bedrooms, two reception rooms, and a kitchen with breakfast room. The property features a downstairs WC, en-suite to the master, and a family bathroom.

Upon ascending a single step, you enter a spacious covered porch leading to the main hallway, which features a stairlift-fitted staircase and a useful under-stairs cupboard. Off the hallway is a large cloakroom/WC with a toilet and basin.

To the right, the front-facing sitting room features a central fireplace and opens via sliding doors into a bright dining room with French doors to the rear garden—perfect for entertaining. The adjoining kitchen includes fitted units, integrated appliances, and garden views, flowing into a breakfast room with storage and internal garage access. A door from the breakfast room returns to the hallway.

Upstairs, the split-level landing leads left to the master bedroom with fitted wardrobe, rear views, and an en-suite shower room. Opposite is bedroom four, a front-facing double. To the right are bedroom two (rear-facing double), bedroom three (front-facing double), and bedroom five (a single with airing cupboard). The family bathroom has a bath with shower over, toilet, and basin.

Outside, there is ample off-road parking on a neat driveway. The landscaped front and rear gardens include mature borders, flower beds, patio areas, and shrubs. The garage, with electric front and rear doors, is mainly used for storage and houses a chest freezer and appliances.

SERVICES - Mains water and drainage, heating is by way of oil fired central heating and the boiler was newly installed in October 2024. (Durrants has not tested any apparatus, equipment, fittings or services and so cannot verify they are in working order).

LOCAL AUTHORITY – East Suffolk – C



3

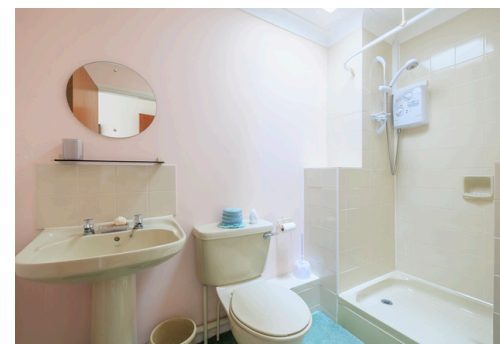


5



2

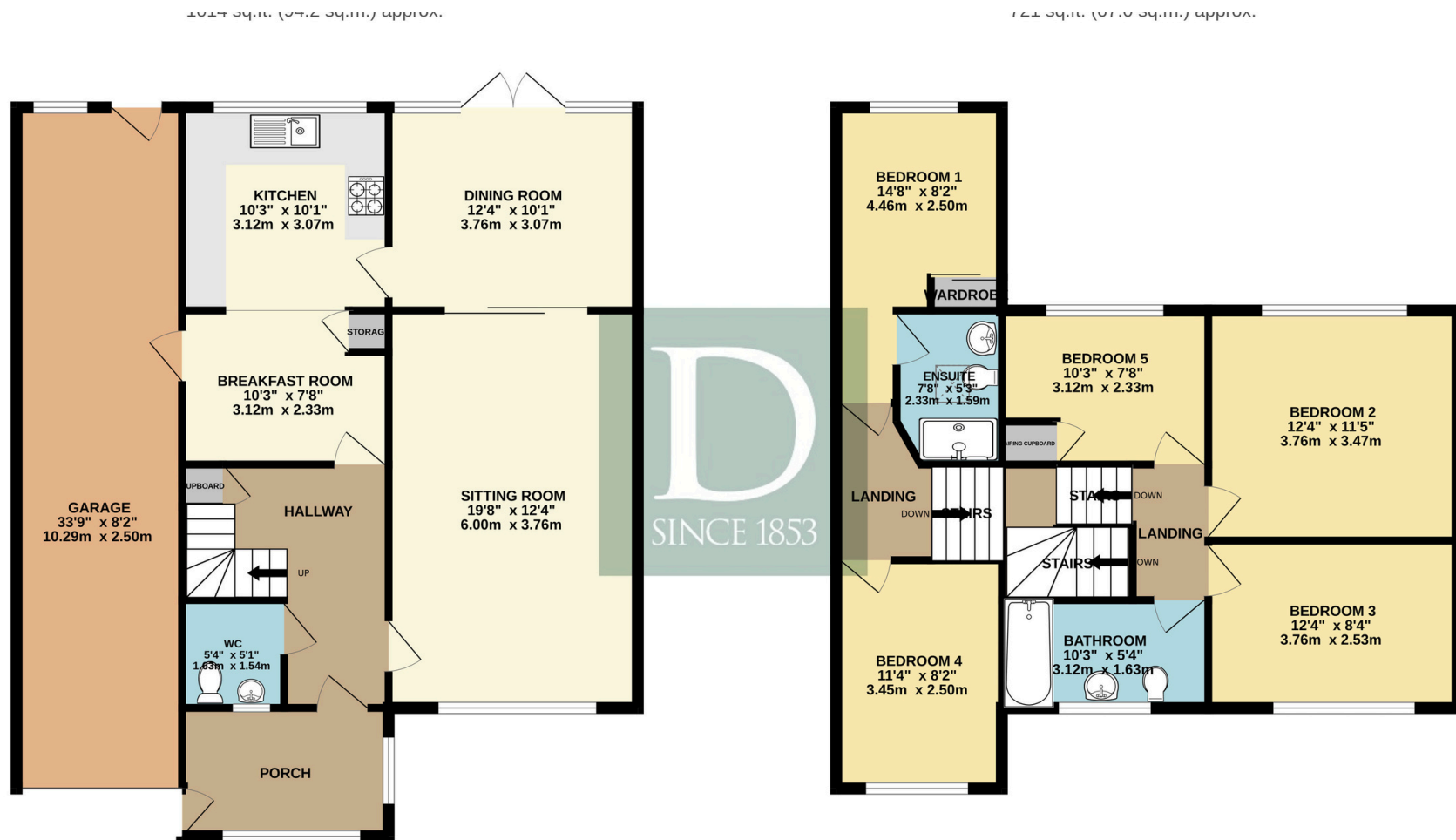








FLOOR PLAN



Residential Agricultural Commercial On Site Auctions Property Management Building Consultancy Auction Rooms Holiday Cottages

IMPORTANT NOTICE

Durrants and their clients give notice that:

- 1.They are not authorised to make or give any representations or warranties in relation to the property either here or elsewhere, either on their own behalf or on behalf of their client or otherwise. They assume no responsibility for any statement that may be made in these particulars. These particulars do not form part of any offer or contract and must not be relied upon as statements or representations of fact.
- 2.Any areas, measurements or distances are approximate. The text, photographs and plans are for guidance only and are not necessarily comprehensive. It should not be assumed that the property has all necessary planning, building regulation or other consents. Durrants have not tested any services, equipment or facilities. Purchasers must satisfy themselves by inspection or otherwise.

CONTACT US

Durrants, 12 Thoroughfare,
Halesworth, Suffolk, IP19 8AH

Tel : **01986 872553**

Email : halesworth@durrants.com

