



Woodville

Bunting Lane | The Street | Wissett | IP19 0JE

Offers Over £700,000

DURRANTS
SINCE 1853

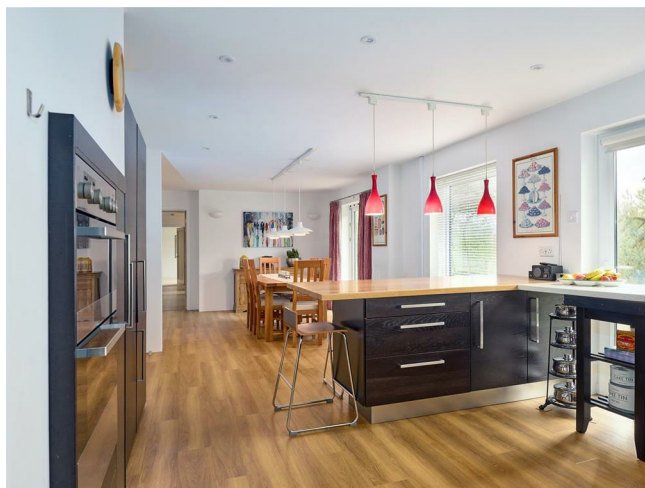
Key features

- A detached, individually designed, versatile family home
- Located in a quiet area in the popular village of Wissett
- Set within two acres (sts)
- Benefits from an attached annexe
- EPC rating – D
- Large double garage with workshop
- 4 double bedrooms
- Ideal for multi-generational living
- Income potential
- Different areas of interest throughout the garden.

Description

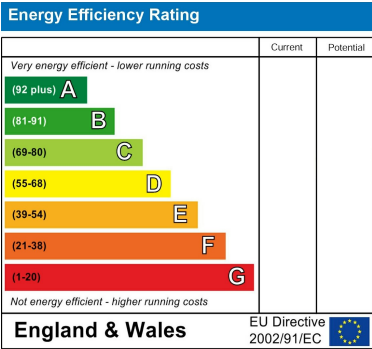
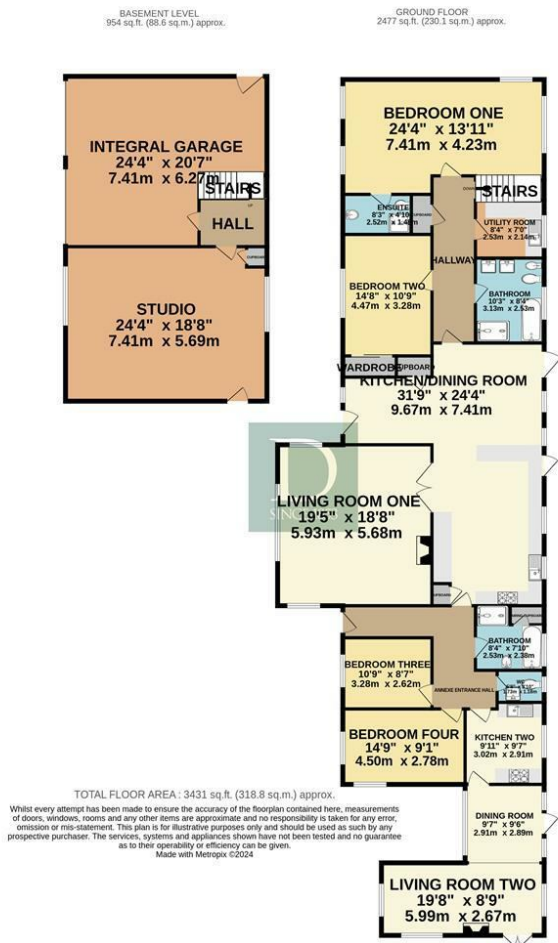
Located at the end of a long driveway in Wissett, in a plot of approximately 2 acres (sts), this four-bedroom detached home offers a wonderful space that can be adapted to individual lifestyle choices, from multi-generational living, income potential from a holiday let, working from home, or simply family living!

Directions





Floor plans



12 Thoroughfare
Halesworth
Suffolk
IP19 8AH
01986 872553
halesworth@durrants.com
<https://durrants.com/>