



Buxton Way | | Halesworth | IP19 8LG

Guide Price £360,000

**DURRANTS**  
SINCE 1853



## Key features

- Close to Halesworth Town Centre
- Open plan kitchen/diner with doors out to the garden
- Generously sized sitting room overlooking the front aspect
- Open plan living
- Three bedrooms including Master with en-suite
- Good size garden to the rear
- Off road parking for several cars as well as detached garage
- Garage currently converted into garden room
- Gas central heating

## Description

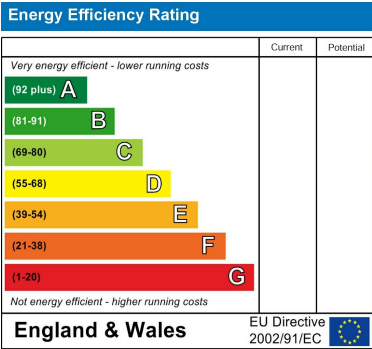
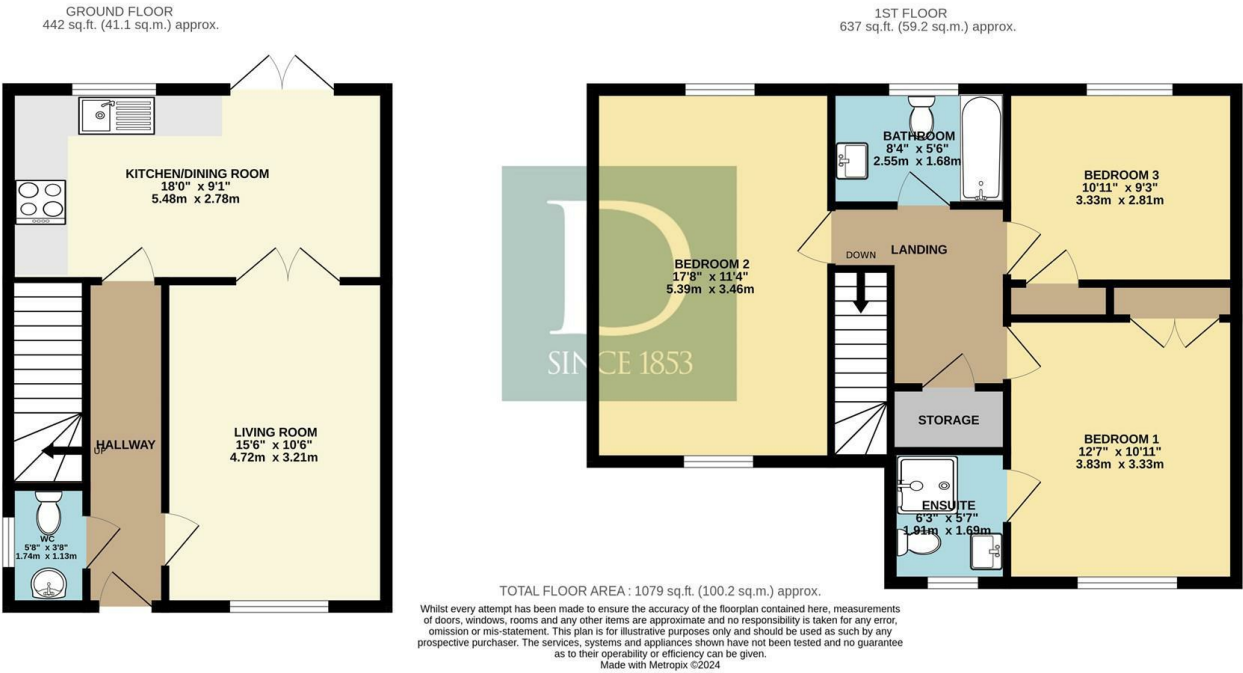
This well presented, link-detached house offers open plan living, three generous size bedrooms and is located close to Halesworth Town Centre.



## Directions



Floor plans



12 Thoroughfare  
Halesworth  
Suffolk  
IP19 8AH  
01986 872553  
halesworth@durrants.com  
<https://durrants.com/>