



Lansbury Road | Halesworth | | IP19 8SA

Guide Price £260,000

**DURRANTS**  
SINCE 1853



## Key features

- Walking distance to Halesworth Town Centre
- Semi-detached house
- Three bedrooms and one family bathroom
- Parking available to the side of the property
- Vendors have found
- Air conditioning unit in main bedroom
- Ample storage space
- Generous size sitting room that leads through to the conservatory
- Recently modernised kitchen with integrated appliances
- Immaculate garden with good size shed/workshop

## Description

Located in Halesworth Town Centre, this semi-detached house offers three bedrooms, a bathroom, well maintained gardens and off road parking is available next to the property!

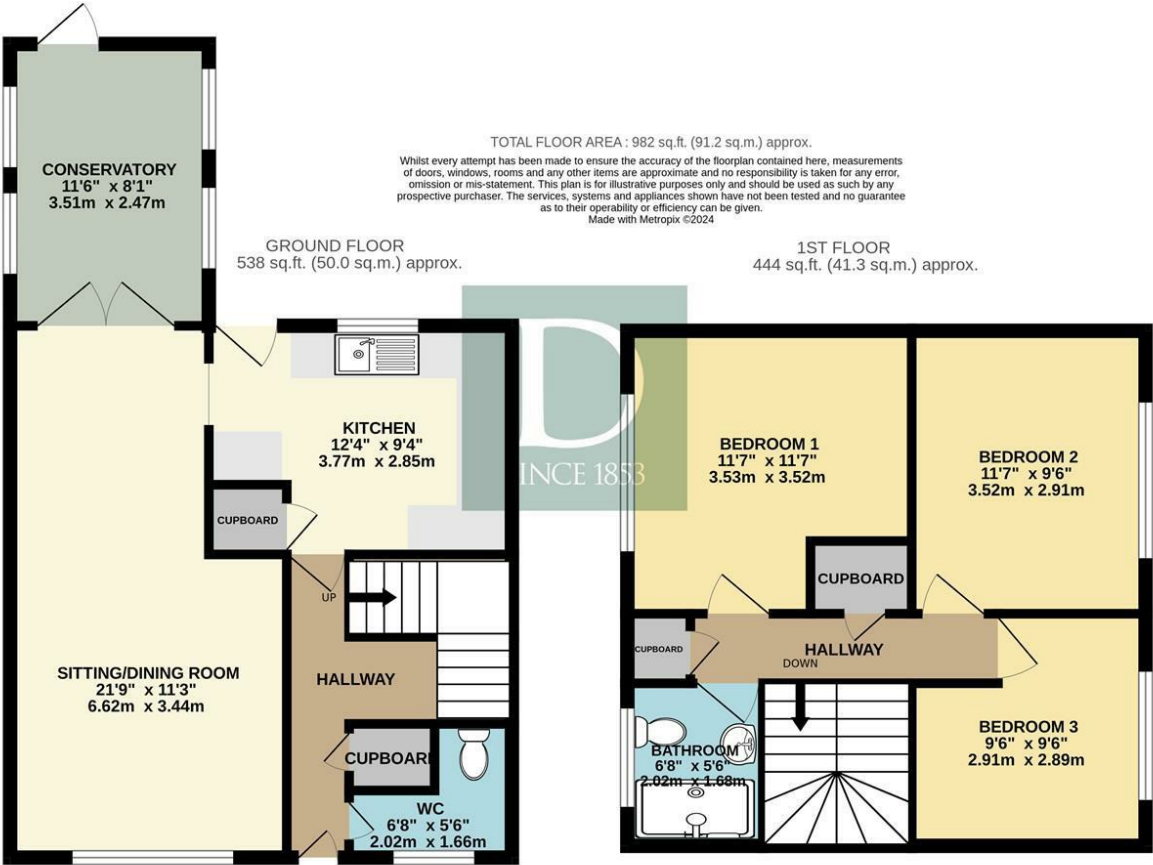
## Directions







Floor plans



Energy Efficiency Rating		
	Current	Potential
Very energy efficient - lower running costs		
(92 plus) <b>A</b>		
(81-91) <b>B</b>		
(69-80) <b>C</b>		
(55-68) <b>D</b>		
(39-54) <b>E</b>		
(21-38) <b>F</b>		
(1-20) <b>G</b>		
Not energy efficient - higher running costs		
England & Wales	EU Directive 2002/91/EC	



12 Thoroughfare  
Halesworth  
Suffolk  
IP19 8AH  
01986 872553  
halesworth@durrants.com  
<https://durrants.com/>