



## The Willow

Mill Road | Peasenhall | | IP17 2LW

Guide Price £625,000

**DURRANTS**  
SINCE 1853



## Key features

- Countryside Views
- Set in just over an acre(sts)
- Double garage with workshop
- Set down a quiet road
- Ample off-road parking
- Large kitchen/diner
- Ground floor bedroom and bathroom
- Light and bright throughout
- Sliding doors from sitting room to the garden
- UPVC double glazing throughout

## Description

Boasting countryside views and open plan living, this four-bedroom detached home is set down a quiet road in Peasenhall.

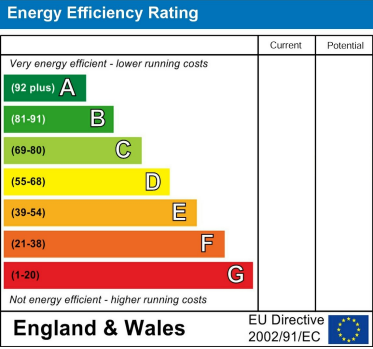
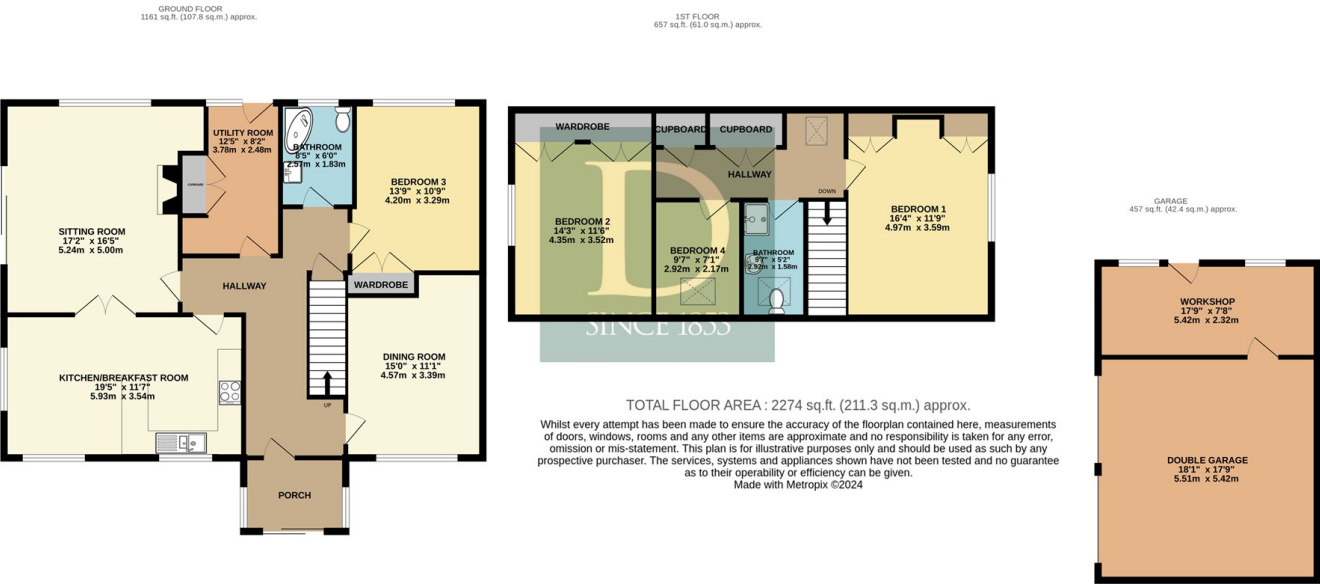
## Directions







Floor plans



12 Thoroughfare  
Halesworth  
Suffolk  
IP19 8AH  
01986 872553  
halesworth@durrants.com  
<https://durrants.com/>