



4 THE GARDENS
WILTON HOLLOW HALESWORTH



Spectacularly presented holiday Chalet located in the picturesque Holton Hall Estate

A beautifully appointed holiday chalet on a FREEHOLD plot, in 'as new' condition located in the desirable 'Garden' part of the Holton Hall estate, providing peace and tranquillity among an abundance of majestic mature trees and a lake which provide for a wealth of wildlife to be enjoyed.

The superbly appointed contemporary accommodation comprises of ENTRANCE HALL with door to Propane gas BOILER CUPBOARD open plan SITTING ROOM/KITCHEN with a pair of fully glazed doors opening onto an extensive decking area, there are windows to both sides of this light and spacious room. The kitchen area has a range of base and wall units in oak effect finish with a range of integral appliances including dishwasher, washing machine, fridge and freezer, gas hob with extractor hood above, fan assisted oven with grill and microwave above, one-and-a-half bowl sink unit with mixer tap. Off the hallway are doors to BEDROOM TWO with fitted wardrobes, BEDROOM THREE, SHOWER ROOM with glazed sliding door to large walk-in shower, WC and vanity unit with wash basin,

BEDROOM ONE with fitted wardrobe with drawers below and a dressing table with mirror above and drawers to side, EN-SUITE WC, and vanity unit with washbasin. To the outside: The chalet stands in a generous plot laid mainly to grass interspersed with mature shrubs and sits behind a screen hedge with mature trees.

SERVICES:

LPG Gas central heating, mains water, drainage & electricity (Durrants has not tested any apparatus, equipment, fittings or services and so cannot verify they are in working order).

CHARGES:

Water and general rates are paid for by member subscriptions which in total currently stand at approximately £1300 per annum (£330 per quarter. Approx.) Electricity is metered and paid for by each member.

VIEWING

Strictly by appointment with the agent's Halesworth office 01986 872 553.

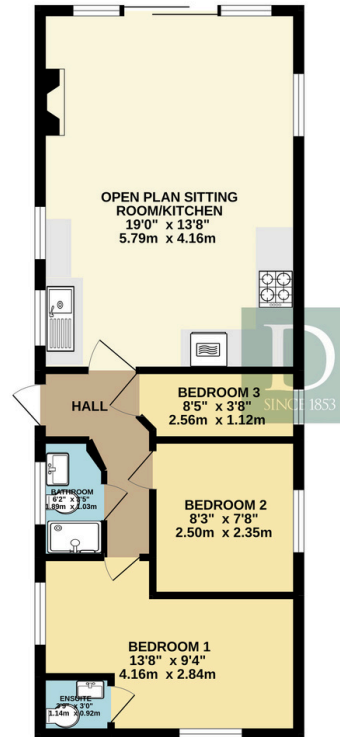




SCENIC
SURROUNDINGS

FLOOR PLAN

GROUND FLOOR
518 sq.ft. (48.2 sq.m.) approx.



TOTAL FLOOR AREA - 518 sq.ft. (48.2 sq.m.) approx.
Whilst every attempt has been made to ensure the accuracy of the floorplan contained here, measurements of doors, windows, rooms and any other items are approximate and no responsibility is taken for any error, omission or mis-statement. This plan is for illustrative purposes only and should be used as such by any prospective purchaser. The services, systems and appliances shown have not been tested and no guarantee

Residential Agricultural Commercial On Site Auctions Property Management Building Consultancy Auction Rooms Holiday Cottages

IMPORTANT NOTICE

Durrants and their clients give notice that:

1. They are not authorised to make or give any representations or warranties in relation to the property either here or elsewhere, either on their own behalf or on behalf of their client or otherwise. They assume no responsibility for any statement that may be made in these particulars. These particulars do not form part of any offer or contract and must not be relied upon as statements or representations of fact.

2. Any areas, measurements or distances are approximate. The text, photographs and plans are for guidance only and are not necessarily comprehensive. It should not be assumed that the property has all necessary planning, building regulation or other consents. Durrants have not tested any services, equipment or facilities. Purchasers must satisfy themselves by inspection or otherwise.

CONTACT US

Durrants, 12 Thoroughfare,
Halesworth, Suffolk, IP19 8AH

Tel : **01986 872553**

Email : halesworth@durrants.com